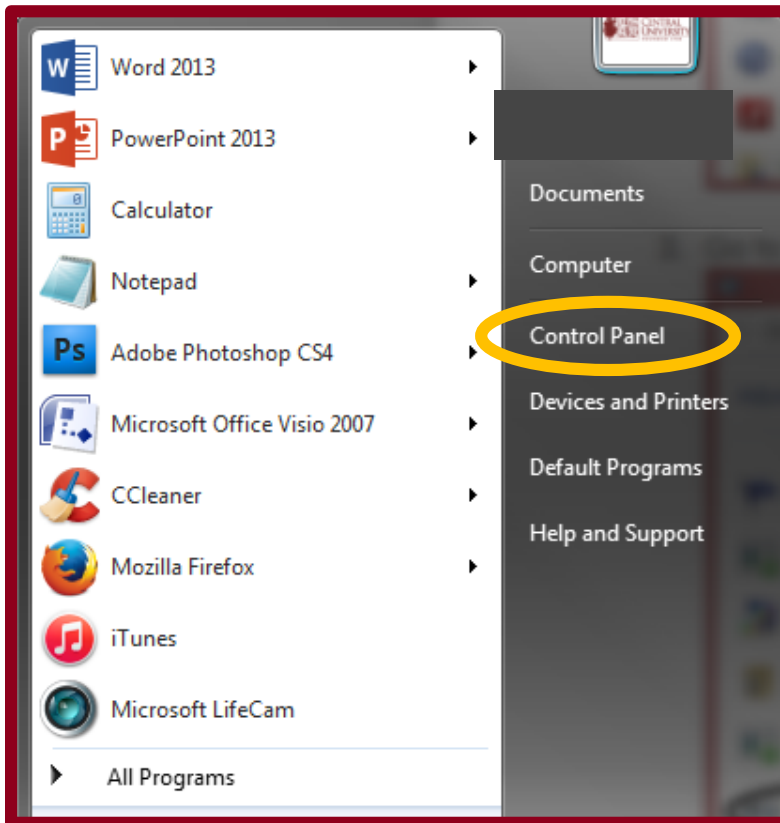
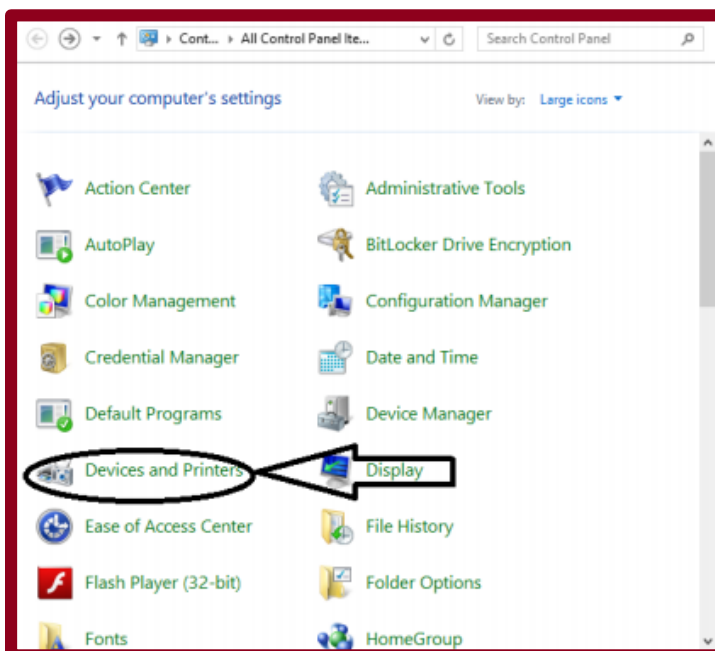


How to Print from EaglePrint from a Laptop PC

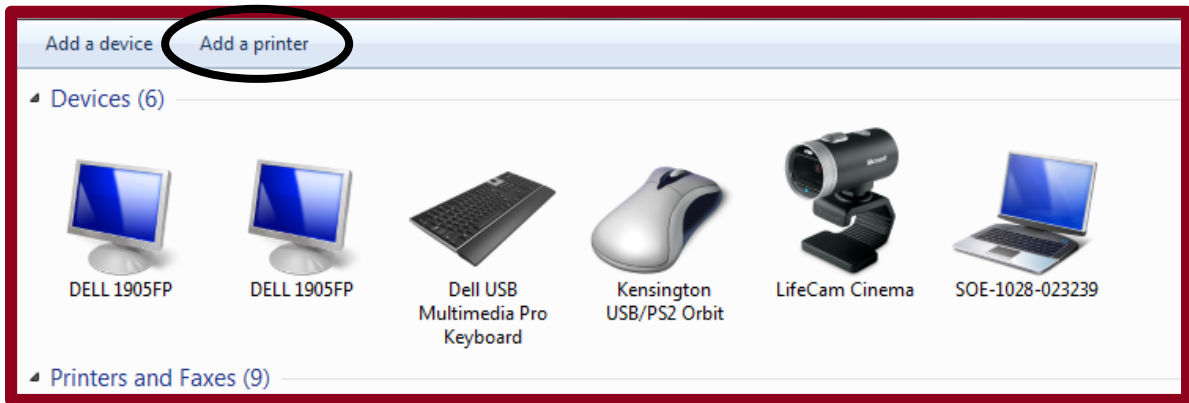
1. Go to or search for the "Control Panel" on your PC.



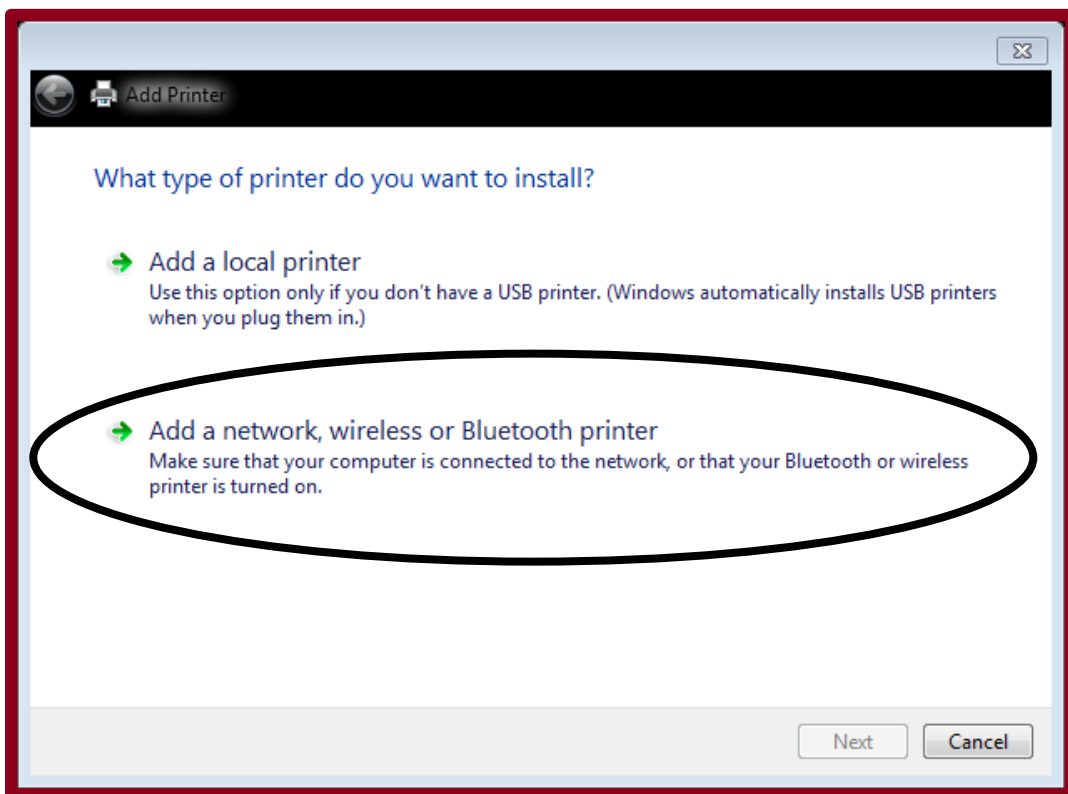
2. Go to "Devices and Printer".



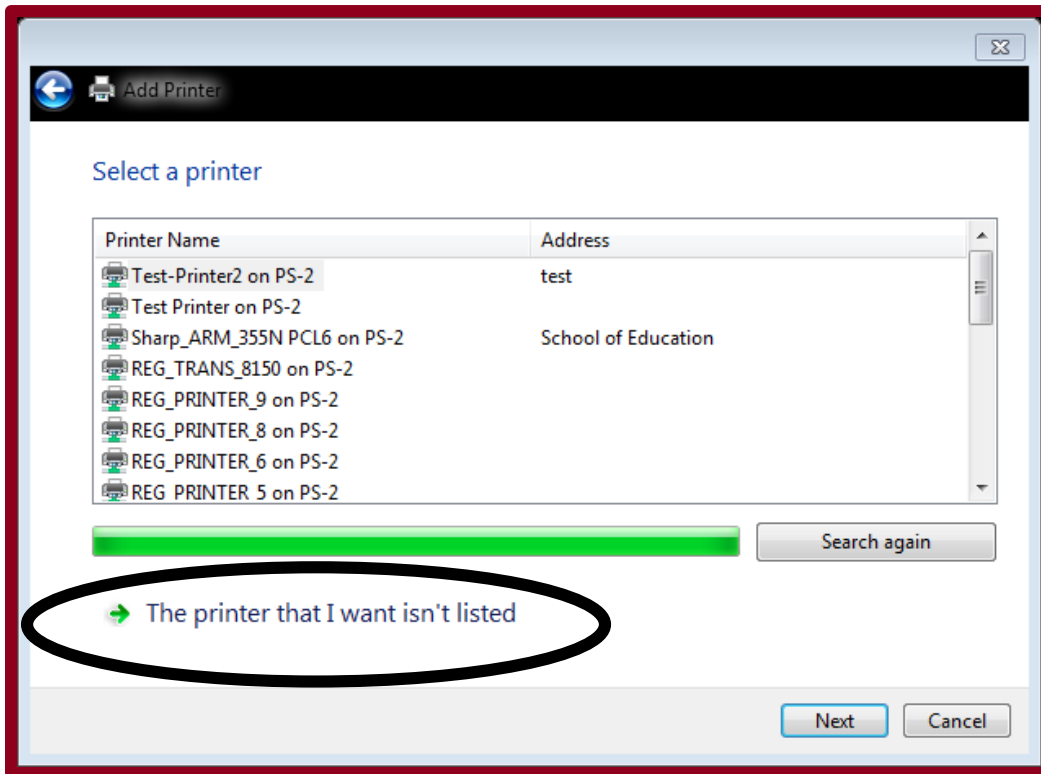
3. Click "Add a Printer".



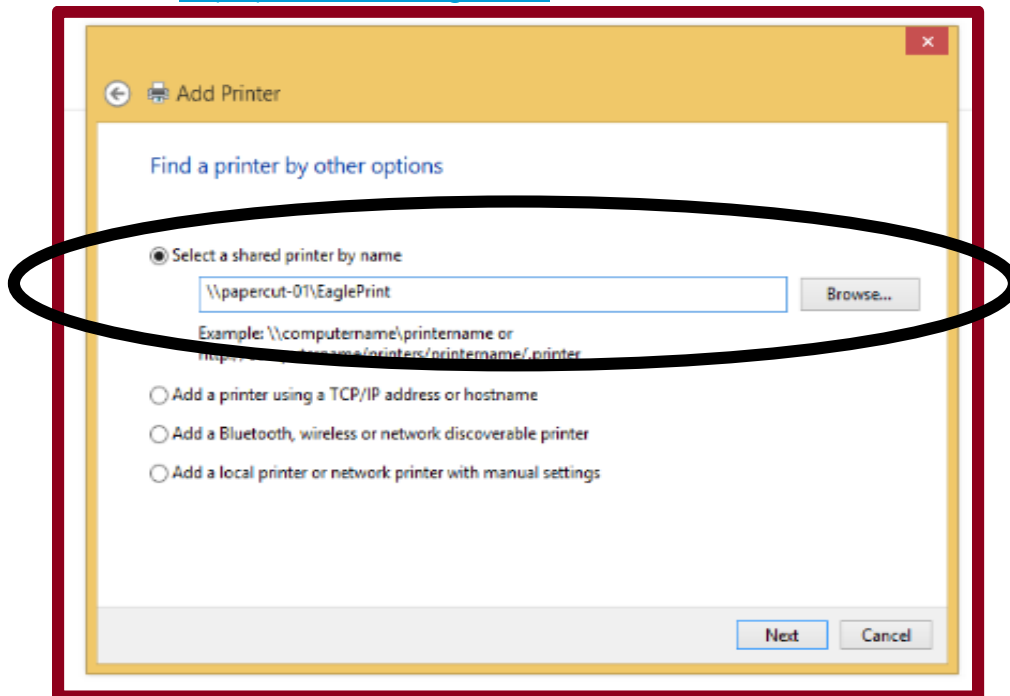
4. Select "Add a network, wireless or Bluetooth printer."



5. Select "The printer that I want isn't listed."

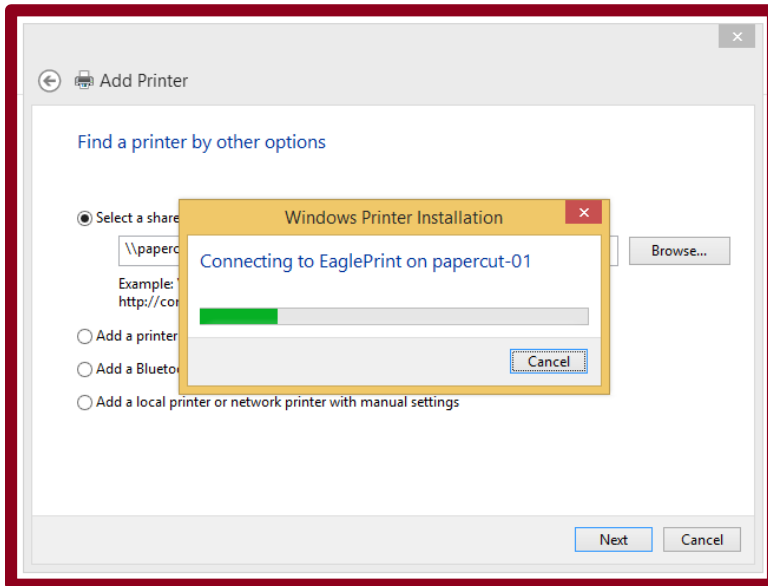


6. Choose "Select a shared printer by name." In the address bar, type the following address: \\papercut-01\EaglePrint and click "Next"

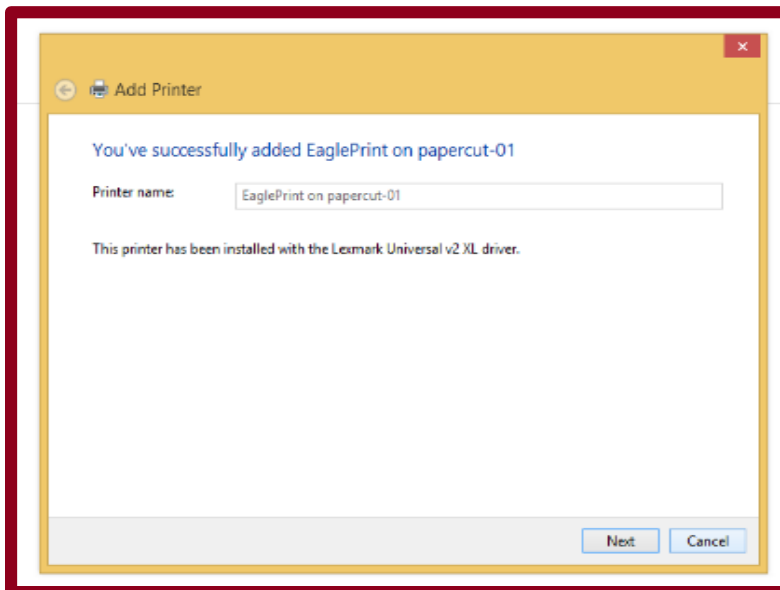


- When the log-in screen pops-up log in with your myEOL username and password. Make sure the domain is "AD". If you do not see the "AD" domain, type in "AD\" and your username (ad\jdoe) in the username box.

You should see the picture below to let you know the drivers are being installed on your machine.



- Click Next once the "You've successfully added EaglePrint on papercut-01" box pops up.



- Click Finish.

Now you are able to select EaglePrint to print your documents from your device!