

# FACTS

**2009 - 2010**



James E. Shepard, Founder

**North Carolina Central University**

**Office of Research, Evaluation and Planning**

**Durham, North Carolina**

# **NCCU FACTS**

**2009 - 2010**

**By**

**Jianping Yu  
Sylvia Seward**

**Senior Advisors:**

**Sandra E. Davis  
Shawn Stewart**

**Office of Research, Evaluation and Planning**

**February 2010**

# TABLE OF CONTENTS

## Preface

Preface.....	v
Evaluation, Comments, and Suggestions.....	vi

## Section 1: General Information

Eagle Facts in Brief: 2009 - 2010.....	2
History and Background.....	3-4
Mission Statement and Vision .....	5
Strategic Goals .....	6
Memberships and Accreditation.....	7
NCCU Board of Trustees .....	8
College Administration .....	8
Academic Administration .....	9-11

## Section 2: New Students

First-Time Freshmen Admissions, Fall 2009.....	13
Transfer Admissions, Fall 2009 .....	14
Graduate Admissions, Fall 2009 .....	15
First Professional Admissions, Fall 2009 .....	16
First-Time Freshmen Average SAT Scores, Fall 2009.....	17
First-Time Freshmen - High School Class Rank, Fall 2009.....	18
First-Time Freshmen - High School GPAs, Fall 2009.....	19
First-Time Freshmen by Gender, Fall 2009.....	20
First-Time Freshmen by Ethnicity and Gender, Fall 2009.....	21
First-Time Freshmen by Residence and Gender, Fall 2009.....	22
First-Time Freshmen by State, Fall 2009.....	23
Transfer Students by State, Fall 2009.....	24
In-State Transfer Students by Transferring Institutions, Fall 2009.....	25-26

## Section 3: Fall Enrollment

Student Enrollment Headcount by Gender .....	28
Student Enrollment Headcount by Classification & Gender .....	29
Student Enrollment Headcount by Classification, Ethnicity & Gender .....	30
Enrollment Headcount by Divisions, Department, Program & Level.....	31-32
Student Enrollment Headcount by Division & Level .....	33
Student Credit Hours by Division, Department & Level, Fall 2009 .....	34
Student Credit Hours by Division, Department & Level, Spring 2010 .....	35
Student Credit Hours by Division Department & Level, .....	36
Student Credit Hours by Division & Level .....	37
Student Credit Hours by Level .....	38
Student Enrollment by Residency.....	39
Student Headcount by Enrollment Category .....	40

Student Enrollment Headcount by State & Gender .....	41
Enrolled North Carolina Students by County & Gender .....	42
Student Enrollment Headcount by Level, Age & Gender .....	43
Academic Program Inventory.....	44-47

## **Section 4: Graduates**

Degrees Awarded by Gender .....	49
Degrees Awarded by Level & Program.....	50
Degrees Awarded by Level & Department .....	51
Degrees Awarded by College /School, Department & Program .....	52-53
Degrees Awarded by College/Schools .....	54
Degrees Awarded by Degree Level & Ethnicity .....	55
Undergraduate Degrees Awarded by Program, Ethnicity, & Gender .....	56
Graduate Degrees Awarded by Academic Program, Ethnicity, and Gender .....	57
Comparison of the Retention Rates of FTF Enrolled in NCCU, (PBI), & UNC System.....	58
Comparison of the Graduation Rates of FTF Enrolled at NCCU, (PBI), & UNC System .....	59
Comparison of the Persistence Rates of FTF Enrolled at NCCU, (PBI), & UNC System.....	60

## **Section 5: Financial Aid**

Summary of Student Financial Aid by Type & Recipient .....	62-63
Summary of Student Financial Aid by Type & Level .....	64
Summary of Student Financial Aid by Level & Percentage .....	65
Summary by Student Financial Aid by Type, Level & Academic Years .....	66
Summary by Student Financial Aid by Type & Academic Years .....	67

## **Section 6: University Workforce (Faculty and Staff)**

University Employment by Status & Gender, Fall 2009.....	69
University Employment by Status & Ethnicity, Fall 2009 .....	70
Full-Time Faculty by Rank & Gender, Fall 2009 .....	71
Full-Time Faculty by Highest Degree Earned, Fall 2009 .....	72
Average Salary of Full-Time Faculty by Rank & Gender, Fall 2009 .....	73
Average Salary Trend of NCCU Full-Time Faculty, Fall 2009 .....	74
Full-Time Faculty by Division, Department, Rank & Gender, Fall 2009.....	75
University Employment by Ethnicity, Gender & Age Range, Fall 2009.....	76
Administrative Position of University Employment by Title, Fall 2009 .....	77
Full-Time Faculty by Ethnicity, Gender & Percentage, Fall 2009 .....	78
Full-Time Faculty by Highest Degree Earned, Ethnicity, & Gender, Fall 2009 .....	79
Full-Time Faculty by Tenure Status, Rank, and Gender, Fall 2009.....	80
Part-time Faculty by Rank, Fall 2009.....	81

## **Section 7: University Finance**

University Revenues by Fiscal Years .....	83
Percentage of University Revenue by Source .....	84
University Expenditures by Fiscal Years.....	85
Percentage of University Expenditures by Fiscal-Years .....	86

## Preface

Dear Colleagues and Friends of NCCU:

It is with great pleasure that I present to you, the NCCU 2009-2010 Fact Book, *FACTS 2009-2010*. This year's edition of Fact Book, with its well designed charts, graphics, tables, fonts and color, represents a further refining of the collection and presentation of data and information about the University.

Like its predecessors, this year's Fact Book is presented to provide an authoritative and statistical compendium of information that will serve as your first reliable source of institutional data and summary information; and as an aid to planning, evaluation, and decision-making.

Although *FACTS 2009-2010* provides facts and figures that can only provide a one-dimensional portrait of NCCU and its vibrant, ambitious, and intelligent community, the information contained herein undoubtedly provides a valuable resource for numerical and anecdotal information that presents a historical context in which to review the University's history and development.

By way of the Fact Book, the goal of the Office of Research, Evaluation and Planning is to enhance the effectiveness of NCCU by coordinating the University's planning and evaluation processes, institutional data collection, analysis, information dissemination, and reporting to the public on the activities and achievements of the University programs and services; and using these processes to assist units in making policy and informed decisions. An integrated part of this goal is to provide information that supports and strengthens operations management and decision-making processes at the University, and to continually improve the level and quality of our services and products.

Accordingly, we always welcome refinements to the Fact Book. A form is presented on page (vi) for your convenience, should you wish to offer any comments, and or suggestions for the improvement of this publication. We also welcome any inquiries growing out of your efforts to interpret or utilize the information presented in this publication. An electronic version of the book will be made available in the future through the office WEBPAGE at [www.nccu.edu/offices/REP/factsbk.htm](http://www.nccu.edu/offices/REP/factsbk.htm) . The Office can be reached by various means: telephone (919-530-6367), by fax (919-530-7973) or by e-mail ([rep@nccu.edu](mailto:rep@nccu.edu)).

The successful completion of this year's publication would not have been possible without the dedicated and innovative, hardworking, caring, and supportive staff of the office. Special thanks to Sandra Davis, Jianping Yu, Sylvia Seward, and others who contributed in one way or the other for the successful completion of this edition.

Sincerely,

Shawn Stewart  
Asst. VC for IR, Effectiveness and Planning  
Office of Research, Evaluation and Planning

# FACTS

2009 – 2010

## Evaluation, Comments, and Suggestion Page

Please use the space below to evaluate, comment, or make any suggestions you wish the office to consider in its effort to improve the Fact Book. Send your feedback to: Office of Research, Evaluation, and Planning, Attention: **Sandra Davis, Director of Institutional Studies**, Suite 2027 New Education Building, NCCU Durham, NC 27707. You may also email or fax your feedback to Ms. Davis. Fax number: (919) 530-7973, e-mail: [sdavis@nccu.edu](mailto:sdavis@nccu.edu). Thank you.

Your Name: (Optional):

---

Your Address or Location:

---

1. Describe any information that you wish to be considered for addition to the next Fact Book.

---

---

---

2. Please provide the page number and description of any information that may need updated, clarification, or deleted.

---

---

---

3. Please provide any other comments and /or suggestions that you wish this office to consider in the next Fact Book.

---

---

---

# **Section 1**

## ***General Information***

Office of Research, Evaluation and Planning

## Eagle Facts in Brief: 2009 - 2010

Student Enrollment, Fall 2009			
<b>Total Enrollment</b>		<b>8,587</b>	
<b>Gender</b>	Male	2,858	33.28%
	Female	5,729	66.72%
<b>Race/Ethnicity</b>	Black	6,711	78.15%
	White	943	10.98%
	Hispanic	143	1.67%
	Other Ethnics & Foreign	790	9.20%
<b>Residency</b>	In-State	7,666	89.27%
	Out-of-State	921	10.73%
<b>Class Level</b>	First-time Freshmen	1,358	15.81%
	Other Freshmen	833	9.70%
	Sophomores	1,388	16.16%
	Juniors	1,051	12.24%
	Seniors & Fifth Year	1,255	14.62%
	Special/Unclassified	556	6.47%
	Graduate	1,356	15.79%
	Special Graduate	190	2.21%
	First-Professional (Law)	600	6.99%
<b>Full-Time &amp; Part-Time &amp; FTE</b>	Full-time	6,579	76.62%
	Part-time	2,008	23.38%
	FTE	7,729.5	90.01%
<b>Average SAT Scores, First-time Freshmen</b>	Math	427	
	Verbal	422	
	Total SAT	849	
Faculty and Staff, Fall 2009			
<b>Total Employment</b>		<b>1,725</b>	
<b>Total Employment</b>		<b>Full-Time</b>	<b>Part-Time</b>
	Employees	1,374	351
<b>Gender</b>	Male	597	148
	Female	777	203
<b>Race/Ethnicity</b>	African American	1,063	231
	Non-African American	311	120
<b>Faculty</b>	Teaching Faculty	409	199
<b>Ratio</b>	Student/Faculty Ratio	15:1	
Graduates, Tuition Cost & Residents			
<b>Total Graduated Students (July 2008 – June 2009)</b>		<b>1,373</b>	
<b>Gender</b>	Male	439	32.0%
	Female	934	68.0%
<b>Tuition &amp; Fees</b>		<b>In-State</b>	<b>Out-State</b>
<b>Annual Tuition &amp; Fees</b>	Undergraduate	\$4,438	\$14,506
	Graduate	\$5,058	\$15,518
	First Professional	\$8,096	\$20,834
<b>Student Residents</b>		<b>Male</b>	<b>Female</b>
<b>On and Off-Campus Resident</b>	Residential Hall (Dormitories)	937	1,559
	Other College Owned Housing	0	0
	Commuters	1,921	4,170
<b>Sub Total Enrollment</b>		2,858	5,729



## History and Background

North Carolina Central University, a state-supported liberal arts institution, was chartered in 1909 as a private institution and opened to students on July 10, 1910. It was founded by Dr. James E. Shepard. From the beginning, when it was known as the National Religious Training School and Chautauqua, its purpose has been the development in young men and women of the character and sound academic training requisite for real service to the nation. To this end, the training of all students has been entrusted to the most capable teachers available.

The institution's early years were characterized by a wealth of enthusiasm and high endeavor, but not of money. Private donations and student fees constituted the total financial support of the school, and the heavy burden of collecting funds rested on the President.

In 1915 the school was sold and reorganized, then becoming the National Training School. During this period of its history, Mrs. Russell Sage of New York was a generous benefactor of the school.

In 1923 the General Assembly of North Carolina appropriated funds for the purchase and maintenance of the school; thus in that year it became a publicly-supported institution, and was renamed Durham State Normal School. Two years later, the General Assembly converted the institution into the North Carolina College for Negroes, dedicating it to the offering of liberal arts education and the preparation of teachers and principals of secondary schools. North Carolina College for Negroes became the nation's first state-supported liberal arts college for African-American students.

At its 1927 session, the General Assembly began a program of expansion of the college plant to conform to the needs of an enlarged academic program. The interest of the Honorable Angus W. McLean, then Governor of North Carolina, and his belief in the institution aided greatly in the promotion of this program. State appropriations were supplemented by a generous gift from B. N. Duke, and by contributions from citizens of Durham in 1929. The 1930's afforded federal grants and State appropriations for a new program of physical expansion and improvement of educational facilities; this program continued until the beginning of World War II.

The College was accredited by the Southern Association of Colleges and Secondary Schools as an "A" class institution in 1937 and was admitted to membership in that association in 1957.

The General Assembly of 1939 authorized the establishment of graduate work in liberal arts and the professions. Pursuant thereto, graduate courses in the Arts and Sciences were first offered in that same year; the School of Law began operation in 1940, and the School of Library Science was established in 1941.

In 1947 the General Assembly changed the name of the institution to North Carolina College at Durham. On October 6, 1947, Dr. Shepard, the founder and President of the college, died. The Board of Trustees appointed an interim committee consisting of Dr. Albert E. Manley, Dean of the College of Arts and Sciences; Miss Ruth G. Rush, Dean of Women; and Dr. Albert L. Turner, Dean of the School of Law, to administer the affairs of the institution until the election of the second president.

On January 20, 1948, Dr. Alfonso Elder was elected President of the institution. At the time of his election, Dr. Elder was serving as head of the Graduate Department of Education and had formerly been Dean of the College of Arts and Sciences. Dr. Elder retired September 1, 1963.

Dr. Samuel P. Massie was elected as the third President of the College on August 9, 1963. Dr. Massie came to the institution from Washington, D. C., where he was Associate Program Director for Undergraduate Science Education of the National Science Foundation and Professor and Chairman of the Department of Pharmaceutical Chemistry at Howard University. He resigned on February 1, 1966.

When Massie resigned on February 1, 1966, the administration of the college was assumed by a second interim committee, whose members were Mr. William Jones, business manager; Dr. Helen G. Edmonds, graduate dean; and Dr. William H. Brown, professor of education. This interim committee served until July 1, 1967, when Dr. Albert N. Whiting assumed his duties as president. Dr. Whiting, was elected president by the Board of Trustees on July 20, 1966. He served as president and chancellor of the institution until his retirement June 30, 1983. North Carolina College at Durham became North Carolina Central University in 1969. Among the significant developments during Dr. Whiting's 16 years of service was the creation of the NCCU School of Business. Programs in public administration and criminal justice were also launched during those years.

A momentous development in the history of higher education in North Carolina came on July 1, 1972, when the state's four-year colleges and universities were joined to become The Consolidated University of North Carolina. The reconstituted University of North Carolina, with 16 individual campuses, was headed by a single president and governed by the University of North Carolina Board of Governors.

Whiting was succeeded by Dr. LeRoy T. Walker in the role of interim chancellor. Walker had served the institution as chairman of the Department of Physical Education and Recreation, head track coach, and vice chancellor for university relations. He had served as the United States' head track and field coach at the 1976 Olympic games, and was a key administrator in the early years of the U.S. Peace Corps. At their February 1986 meeting, the University of North Carolina Board of Governors, at the request of NCCU's Board of Trustees, retroactively awarded Walker the title of chancellor, effective as of the beginning of his term in 1983.

Dr. Tyrone R. Richmond, formerly dean of the School of Business, succeeded Walker as chancellor on July 1, 1986. Prior to his arrival at NCCU, Richmond had served as associate dean and professor at the School of Business and Public Administration at Howard University. Richmond's tenure saw the creation of the School of Education (formerly the Department of Education) and a reorganization of the academic administrative structure. Richmond resigned as chancellor to return to the classroom and was succeeded on January 1, 1992, by Dr. Donna J. Benson, who served as interim chancellor for one year.

Benson was succeeded on January 1, 1993, by Julius L. Chambers, who had been director-counsel (chief executive) of the NAACP Legal Defense and Education Fund. Chambers, a distinguished civil rights attorney, was the first alumnus to serve as chief administrator, having received his bachelor's degree in history from North Carolina College at Durham in 1958. Chambers launched a major capital construction effort including an additional residence facility on the site of the existing Chidley Hall, a biomedical/biotechnology research facility, a new School of Education building as well as substantial renovations to all student residence halls and most classroom facilities.

James H. Ammons, the ninth chief administrator of North Carolina Central University (NCCU), became chancellor June 1, 2001. Under his leadership, the university experienced significant enrollment growth, making North Carolina Central University the fastest growing university among the 16 campuses in the University of North Carolina system.

Charlie Nelms assumed the position of chancellor on August 1, 2007.

---

Source: <http://www.nccu.edu/aboutnccu/History.cfm>

## **University Mission Statement**

North Carolina Central University is a comprehensive university offering programs at the baccalaureate, master's, and selected professional levels. It is the nation's first public liberal arts institution founded for African-Americans. The university upholds a strong liberal arts tradition and a commitment to academic excellence in a diverse educational and cultural environment. It seeks to encourage intellectual productivity and to increase the academic and professional skills of its students and faculty.

The mission of the university is to prepare students academically and professionally to become leaders prepared to advance the consciousness of social responsibility in a diverse, global society. The university will serve its traditional clientele of African-American students; it will also expand its commitment to meet the educational needs of a student body that is diverse in race and other socioeconomic qualities.

Teaching, supported by research, is the primary focus of the university. As a part of that focus, the university encourages its faculty to pursue intellectual development and rewards effective teaching and research. The university recognizes, however, the mutually reinforcing impact of scholarship and service on effective teaching and learning. North Carolina Central University, therefore, encourages and expects faculty and students to engage in scholarly, creative, and service activities, which benefit the community.

---

Source: <http://www.nccu.edu/aboutnccu/mission.cfm>

## **Vision**

Recognized as one of the nation's leading institutions for academic excellence in a diverse cultural and education environment.

## **The Six Core Values**

Excellence in Teaching, Research, Scholarship, and Creativity  
Access to Education and Effective Development  
Opportunities Promotion of Citizenship, Service, and Social Justice  
Appreciation of and Respect for Diverse Perspectives  
Superb Customer Service  
Commitment to Life Long - Learning

From these guiding principles, the goals of the Strategic Plan are anchored.

## **The Eight Strategic Goals**

1. Sustain excellent, innovative teaching, learning, and research, in an environment grounded in intellectual discovery and community service.
2. Enhance the rigor and relevance of existing degree programs while developing new degree programs to meet the evolving needs of society.
3. Build upon the University's history of addressing the needs of underserved groups through innovative outreach efforts and effective retention strategies.

4. Systematically increase public and private financial support and expand collaborative partnerships.
5. Increase NCCU's participation and presence locally, nationally, and internationally to enhance the University's image and impact.
6. Promote the use of integrated information technology in academic and administrative functions.
7. Ensure that appropriate facilities are available in requisite quality and quantity.
8. Implement a University-Wide Continuous Improvement Process to promote efficiency and effectiveness.

Source: <http://www.nccu.edu/aboutnccu/strategicplan.cfm>

## **Memberships and Accreditation**

### **Specialized (Unit) Accreditation at North Carolina Central University**

**Athletic Trainer (Department of Physical Edu.):** Commission on Accreditation of Athletic Training Education

**Business:** Association of Collegiate Business Schools and Programs, & Association to Advance Collegiate Schools of Business

**Chemistry:** American Chemical Society

**Child Development Laboratory (School of Edu.):** National Association for the Education of Young Children

**Communication Disorders (School of Edu.):** American Speech—Language—Hearing Association

**Counseling (School of Edu.):** Council for Accreditation of Counseling and Related Educational Programs

**Criminal Justice:** North Carolina Criminal Justice Education and Training Standards Commission

**Dietetics (Department of Human Sci.):** Commission on Accreditation for Dietetics Education

**Education:** National Council for Accreditation of Teacher Education, State Department of Public Instruction (40 areas/programs of licensure approved at both initial and advanced levels)

**Geography (Department of Environmental, Earth & Geospatial Sci.):** University Consortium for Geographic Information Science

**Hospitality and Tourism:** Accreditation Commission for Programs in Hospitality Administration

**Law:** American Bar Association

**Library & Information Sciences:** American Library Association

**Nursing:** North Carolina Board of Nursing, & National League for Nursing Accrediting Commission

**Parks & Recreation (Physical Education & Recreation Department):** National Recreation and Park Association / American Association for Physical Activity and Recreation

**Public Health Education:** Society of Public Health Education – American Association for Health Education

**Social Work:** Council on Social Work Education

**Theater:** National Association of Schools of Theater

**North Carolina Central University**

**THE UNIVERSITY OF NORTH CAROLINA BOARD OF GOVERNORS  
2009-2010**

**Board Members Directory**

Source: <http://www.northcarolina.edu/bog/members.htm>

**NCCU Members of the Board of Trustees**

**2009 - 2010**

<b>Name</b>	<b>Cities</b>
Mr. Glenn B. Adams, (Chair)	Fayetteville, NC
Mr. Charles J. Baron	Washington, DC
Dr. Dwight D. Perry, (Secretary)	Durham, NC
Mr. George R. Hamilton	Midland, MI
Mr. Eric C. Michaux	Durham, NC
Mr. Robert E. Dolan	Whitehouse Station, NJ
Mrs. Avon L. Ruffin	Lewisville, NC
Mr. Harold T. Epps	Philadelphia, PA
Mrs. Nancy J. Wysenski	Durham, NC
Mr. Paul Pope, Jr.	Durham, NC
Mrs. Kay T. Thomas,	Rocky Mount, NC
Mr. Dwayne Johnson, SGA President	Durham, NC
Mr. Carlton Thornton	Durham, NC
<b>Board of Trustees Campus Contacts:</b>	
<b>Dr. Charlie Nelms, Chancellor</b>	

Source: <http://www.nccu.edu/Administration/bot/Members.cfm>

# College Administration

2009 - 2010

<b>OFFICE OF THE CHANCELLOR</b>	
<b>Chancellor</b>	<b>Charlie Nelms, Ed.D.</b>
Chief of Staff	Susan L. Hester, MPH
Executive Assistant to the Chancellor	Betty Willingham, BS
Special Assistant to the Chancellor	Roger Gregory, BS
Assistant to the Chancellor for Legal Affairs	Melissa Jackson, JD
Director, Public Relation	Cynthia Fobert, MA
Director, Government and Community Relations	Starla Huggins, BA
Chief Information Officer (Interim CIO)	John Smith, MS
Director, Athletics	Ingrid Wicker-McCree, Ed.D.
Director, Title III	Brenda Shaw, Ph.D.
Director, Strategic Planning	Johnnie Southerland, MA
<b>VC, Directors, Administrators and Officers</b>	
Provost and VC for Academic Affairs	Kwesi Aggrey, Ph.D.
VC for Graduate Education and Research	Hazell Reed, Ph.D.
VC for Financial Affairs	Alan Robertson, Ed.D.
VC for Academic Affairs	Belinda Simmons, Ph.D.
VC for Student Affairs and Enrollment Management	Kevin Rome, Ph.D.
VC for Academic Service	Paquita M. Yarborough, MS
VC for Institutional Advancement	LaTanya D. Afolayan, MA
<b>Faculty and Staff Senates</b>	
Chair, Faculty Senate	Minnie Sangster
Vice Chair, Faculty Senate	Arcelia Jefferys
Chair, Staff Senate	Rebie Coleman
Vice Chair, Staff Senate	Karen Sanford

Note: data source is from PDF 2009 file dated as of September 30, 2009.

## Academic Administration Division Chairs and Department Heads 2009 - 2010

<b>Office of the Provost / Vice Chancellor, Academic Affairs</b>	
<b>Provost for Academic Affairs</b>	<b>Kwesi E. Aggrey, PH.D.</b>
Asst. to the Provost & VC, Academic Affairs	Belinda Simmons,
Asst. VC, University Programs	Janice Harper, Ph.D.
Asst. VC, Institutional Research, Effectiveness & Planning	Shawn Stewart, EDM, MBA
Asst. VC, Academic Services	Bernice D. Johnson, Ph.D.
Director, University Accreditation	Pauletta B. Bracy, Ph.D.
Director of Institutional Effectiveness	Jeanette M Barker, Ph.D.
Director, Academic Technology (Interim)	Gregory Marrow, Ph.D.
Director, Library Services, Sheppard Library	Theodosia Shields, Ph.D.
<b>Deans of College and Schools</b>	
Dean, College of Liberal Arts (Interim)	Mary T. Mathew , Ph.D.
Dean, School of Library & Information Sciences	Irene Owens, Ph.D.
Dean, School of Law	Raymond Pierce, JD
Dean, School of Education	Cecelia Steppe-Jones, Ph.D.
Dean, School of Business	Bijoy K. Sahoo, Ph.D.
Dean, University College	Bernice D. Johnson, Ph.D.
Dean, College of Science and Technology (Interim)	Yolanda B. Anderson, Ph.D.
Dean, College of Behavioral & Social Science	Elwood Robinson, Ph.D.
Dean, School of Graduate Studies (Interim)	Sandra F. DeLauder, Ph.D.
Chair, Nursing	Lorna H. Harris, Ph.D.
<b>Other Directors and Managers</b>	
Director, Extended Studies / Uni. Teaching & Learning Center	Kimberly Phifer-McGhee, MA (Interim)
Director, Institutional Research	Sandra Davis, MBA.
Director, Office of International Affairs	Emmanuel Oritsejafor, Ph.D.
Director, Honors Program	Timothy Holley, D.M.A.
Director, Alumni Affairs	Anita B Walton, MED
Director, Art Museum	Kenneth Rodgers, MFA
Director of Summer School	Claudette Free, BBA
University Registrar	Jerome Goodwin, Ph.D.
Director, QEP Quality Enhancement Plan	Regina R Alston, MA
<b>College of Liberal Arts - Chairpersons and Directors</b>	
Dean ,College of Liberal Arts, (Interim)	Mary T. Mathew , Ph.D.
Associate Dean, College of Liberal Arts, (Interim)	Michele Ware, Ph.D.
Chair, Art	Melvin Carver, Ph.D.
Chair, Music	Paula Harrell, Ph.D.
Chair, English & Mass Communication	Andrew Williams, Ph.D.
Chair, Modern Foreign Languages (Interim)	Sandra Vavra, Ph.D.
Chair, Theatre	Johnny Alston, Ph.D.
Chair, History	Carlton Wilson, Ph.D.
Chair, Aerospace Studies (Duke/NCCU)	Peter R Oertel, Ph.D.
Military Science, Army ROTC (Duke/NCCU)	Lt. Col. Mark Tribus, MBA

To Be Continued

<b>College of Behavioral &amp; Social Sciences - Chairpersons and Directors</b>	
Dean, College of Behavioral & Social Sciences	Elwood L. Robinson, Ph.D.
Associate Dean (Interim)	M. LaVerne Reid, Ph.D.
Chair, Criminal Justice	Harvey McMurray, Ph.D.
Chair, Political Science (Acting)	Jarvis A Hall Ph.D.
Chair, Public Administration	Ronald G. Penny, JD
Chair, Psychology	Les Brinson, Ph.D.
Chair, Sociology (Acting)	James C Davies, Ph.D.
Chair, Social Work	Isaac A. Robinson, Ed.D.
Chair, Human Sciences	Debra O. Parker, Ph.D.
Chair, Public Health Education	David H Jolly, Ph.D.
Chair, Physical Education and Recreation	Virginia Politano, Ph.D.
<b>College of Science &amp; Technology - Chairpersons and Directors</b>	
Dean, College of Science & Technology (Interim)	Yolanda B. Anderson, Ph.D.
Associate Dean, College of Science & Technology	Sandra F Delauder, Ph.D.
Director, Student Professional Development	Norma D Petway, BS
Chair, Biology	Amal Abu-Shakra, Ph.D.
Co-Chair, Chemistry (Interim)	Shawn Sendlinger, Ph.D.
Co-Chair, Chemistry (Interim)	John Myers, Ph.D.
Chair, Environmental, Earth & Geospatial Science	Yolanda B. Anderson, Ph.D.
Chair, Mathematics/Computer Sciences	Russell J. Gosnell, Ph.D.
Chair, Physics (Interim)	Benjamin Crowe, Ph.D.
Chair, Pharmaceutical Sciences	David J Kroll, Ph.D.
Director, CREST Center	Branislav Vlahovic, Ph.D.
<b>School of Education- Associate Deans, Assistant Deans, Chairs &amp; Directors</b>	
Dean, School of Education	Cecelia Steppe-Jones, Ph.D.
Associate Dean, Graduate Programs	Diane M. Scott, Ph.D.
Assistant Dean & Director, Teacher Education	Sharon L. Spencer, Ph.D.
Chair, Educational Leadership Research, and Technology	Helen M. Jones, Ph.D.
Chair, Special Education	Alana Zambone, Ph.D.
Chair, Communications Disorders	Thomas Layton, Ph.D.
Chair, Counselor Education	Edward Moody, Ph.D.
Director, Recruitment & Advisement	Cheresa D. Clemons, MED
Director, University School Partnerships	Chena Flood, Ph.D.
Director, Instructional Technology	Tracy Weeks,
Director, NC Teaching Fellow Program	Katrina Y. Billingsley, MA
<b>School of Law- Associate Deans, Assistant Deans &amp; Directors</b>	
Dean, School of Law	Raymond Pierce, JD
Associate Dean. Finance & Administration	Tammi Jackson, JD, MBA
Associate Dean, Student Services	Linda Sim, JD
Associate Dean, Academic Affairs	Mark W. Morris, LLM
Assistant Dean, Student Affairs	Lydia Lavelle, JD
Assistant Dean, Admissions	Stephanie Williams, JD
Assistant Dean, Career Services	Linda A Spagnola, JD
Assistant Dean, Evening Programs	Adrienne Meddock, JD
Assistant Dean, Admission	Ronald Douglas, JD
Supervising Attorney	Pamela Glean, JD
Director, Academic Development	Deborah Pritchard, JD
Director, Academic Support	Karen A Hill, JD
Director, Development	Melissa Davis, JD
Director, Legal Writing	Brenda Gibson, JD
Director, Law School Relation	Staris Best, JD
Director, Wellness	Donna Kornegay, Ph.D.
Director, Pro Bono Program	Page Potter, JD
Director, Enrollment Management	Sandra Brown Bechtold,

(Continued)



<b>School of Business- Associate Deans, Assistant Deans &amp; Directors</b>	
Dean, School of Business	Bijoy K. Sahoo, Ph.D.
Associate Dean, Graduate Programs	Youngil Cho, Ph.D.
Assistant Dean, Student/Program Advancement	Robert L. Chapman, MBA
Assistant to the Dean, Budget/Administration	Sybil Henderson, MBA
Director, Student Professional Development	Cindy R. Love, MPA
Assistant Director, Small Bus. Tech. Dev. Center (SBTDC)	Mary F. Speight, BS
Director, Hospitality/Tourism Administration	Beverly A. Bryant, Ed.D
<b>School of Library &amp; Information Sciences- Associate &amp; Assistant Deans</b>	
Dean, School of Library & Information Sciences	Irene Owens, Ph.D.
Director Of Graduate Studies	Tysha N Jacobs, MIS
<b>University College-Associate Deans, Assistant Deans &amp; Directors</b>	
Dean , University College	Bernice D. Johnson, Ph.D.
Associate Dean, University College	Ontario S. Wooden, Ph.D.
Associate Dean, Academic Advising	Robin S. Williams, Ph.D.
Director, Academic Support Center	Ann Edmonds, MEd
Director, Community Colleges/Transfer Students	Tenita Philyaw-Rogers, MA
Director, Health Careers	Charles McClinton, Ph.D.
Director, Orientation and First Year Experience	Janelle Simmons, MA
Director, Student Engagement and Exclusiveness Programs	Sarah Bell-Lucas, MEd.
Director, University Testing Center	N. Scherrye Williams, MA
<b>Student Affairs &amp; Enrollment Management (Administrators)</b>	
VC, Student Affairs & Enrollment Management	Kevin D. Rome, Ph.D.
Assistant to the VC, Student Affairs	Patricia S. Nelson,
Special Assistant to the VC	Vickie McNeil,
Associate VC	Frances D. Graham, Ph.D.
Associate VC, Enrollment Management & Director of Financial Aid	Sharon J. Oliver, MA
Assistant VC/Dean, Student Affairs & Dean of Students	Louis A. Velez, MA
Assistant Dean, Students & Greek Coordinator	Gary Brown, BA
Assistant Dean,	Emma Mosby, MA
Director, Counseling Center	Carolyn D. Moore Ph.D.,
Director, Campus Recreation	Erica Dixon, MS
Campus Ministry	Rev. Michael D. Page,
Director, Orientation and First Year Experience	Janelle Simmons, MA
Medical Director	Letitia Hazel, MD
Director, Student Support Services	Kesha Lee, MA
Director, Women's Center	Chimi Boyd, BA
Assistant Director, Student Union & Alfonso Elder Student Union	Marquita Johnson,
Student Leadership, Training & Development	Peggy Watson Alexander,
Director , Residential Life	Jennifer A. Wilder Ph.D.
Director , Student Health & Counseling Services	Charles E. Bowen,
Director, Undergraduate Admissions	Anthony M Brooks,

(Continued)

## Financial Affairs (Administrators)

VC, Administration and Financial Affairs	Alan D. Robertson, Ed.D.
Associate VC, HR/EEO Officer	Mark Steelman, MPA
Associate VC, Facilities Management	Zack Abegunrin, BS
Assistant VC, Administration & Finance	Deborah Lane, MBA
Assistant VC, Budgets & Financial Planning	Cynthia Carter, MBA
Assistant VC and Comptroller	Yolanda B. Deaver, MS
Director, Auxiliaries & Business Services	Timothy Moore, BA
Director, Health and Safety	John Lambeth, Ph.D.
Director, Purchasing	Godfrey Herndon, JD
Assistant Director, Budget	Theresa Turner, MS
Director, Facilities Services	Phillip Powell, MS
Director, Design and Construction Services	Tim McMullen, BS

## Graduate Education and Research (Administrators)

VC, Graduate Education and Research	Hazell Reed, Ph.D.
Dean, Graduate Studies	Saundra F. DeLauder, Ph.D.
Director, (BBRI) (Interim)	Faye J. Calhoun, DPA, MS
Director, (BRITE)	Li-An Yeh, Ph.D.
Director, Contracts and Grants	Kathy Riggsbee, BS
Director, Sponsored Research	Tyrone Eaton, BS

## Institutional Advancement (Administrators)

VC, Institutional Advancement	LaTanya D Afolayan, MA
Associate VC, Institutional Advancement	Johnnie Southerland, MA
Director, Annual Giving	Douglass Yopp, MA
Director, Career Service (Interim)	Donna Hembrick, MA
Director, Stewardship	LaMisa McCoy, BS
Director, Major Gifts	Randal Childs, MBA
Director, Alumni Affairs	Anita B Walton, MED

## **Section 2**

# ***New Student***

Office of Research, Evaluation and Planning

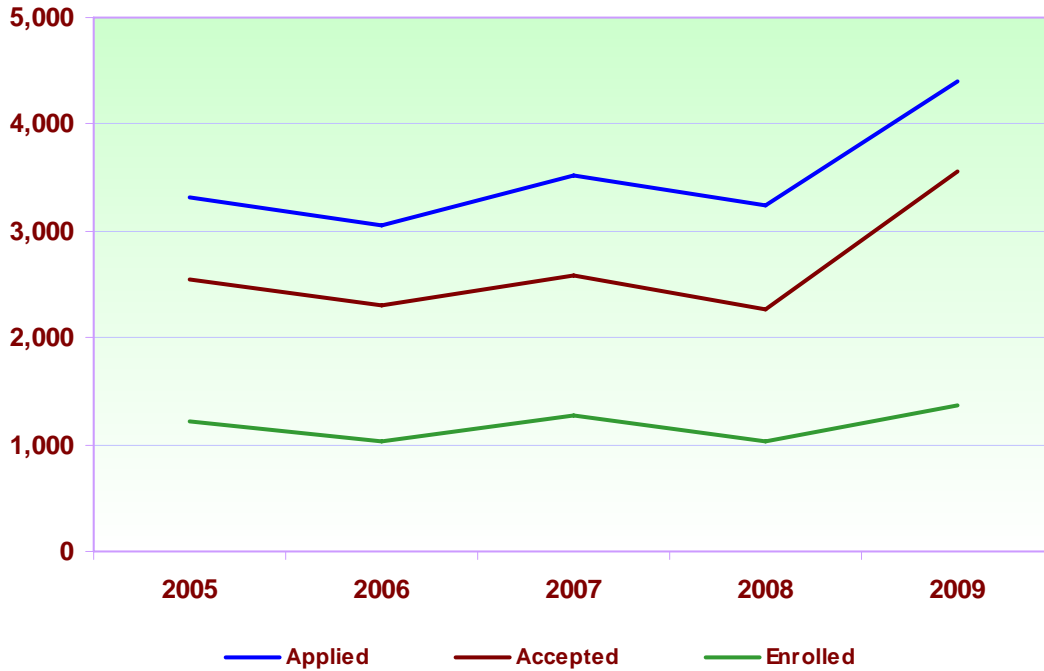
## First-Time Freshmen Admissions

Fall 2005 – 2009

	Applied	Accepted	Accepted vs. Applied	Enrolled	Enrolled vs. Accepted
<b>2005</b>	3,321	2,545	76.6%	1,226	48.2%
<b>2006</b>	3,057	2,296	75.1%	1,021	44.5%
<b>2007</b>	3,513	2,585	73.6%	1,265	48.9%
<b>2008</b>	3,232	2,260	69.9%	1,035	45.8%
<b>2009</b>	4,402	3,567	80.7%	1,358	38.1%

## First-Time Freshmen Admissions

Fall 2005 – 2009



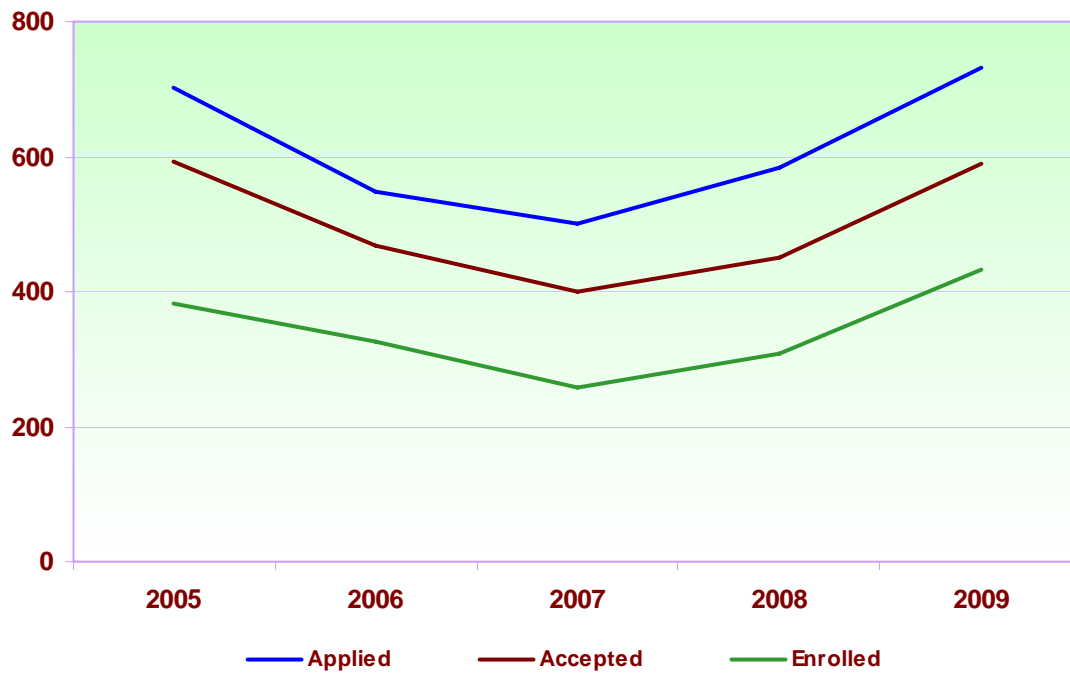
## Transfer Admissions

Fall 2005 – 2009

	Applied	Accepted	Accepted vs. Applied	Enrolled	Enrolled vs. Accepted
<b>2005</b>	701	593	84.6%	383	64.6%
<b>2006</b>	549	469	85.4%	327	69.7%
<b>2007</b>	501	401	80.0%	258	64.3%
<b>2008</b>	585	450	76.9%	308	68.4%
<b>2009</b>	731	589	80.6%	432	73.3%

## Transfer Admissions

Fall 2005 – 2009



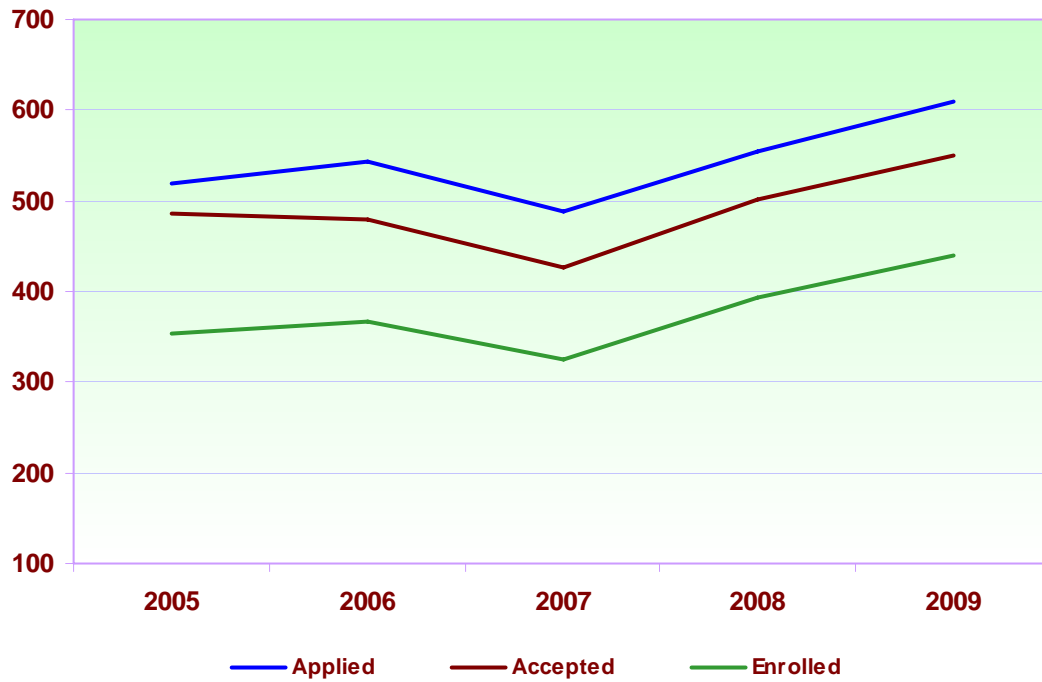
## Graduate Admissions

Fall 2005 – 2009

	Applied	Accepted	Accepted vs. Applied	Enrolled	Enrolled vs. Accepted
<b>2005</b>	519	486	93.6%	353	72.6%
<b>2006</b>	543	480	85.4%	366	76.3%
<b>2007</b>	488	427	87.5%	326	77.1%
<b>2008</b>	555	501	90.3%	393	78.4%
<b>2009</b>	609	549	90.1%	439	79.9%

## Graduate Admissions

Fall 2005 – 2009



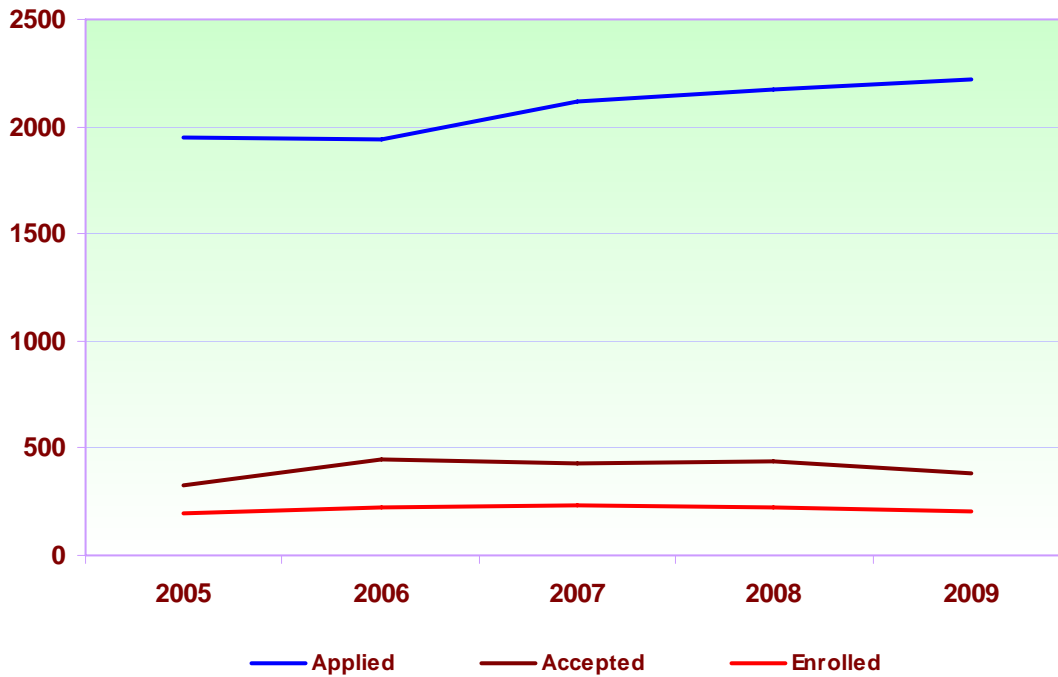
## First Professional Admissions

Fall 2005 – 2009

	Applied	Accepted	Accepted vs. Applied	Enrolled	Enrolled vs. Accepted
<b>2005</b>	1945	322	16.6%	199	61.8%
<b>2006</b>	1941	449	23.1%	223	49.7%
<b>2007</b>	2116	433	20.5%	233	53.8%
<b>2008</b>	2176	437	20.1%	220	50.3%
<b>2009</b>	2217	383	17.3%	202	52.7%

## First Professional Admissions

Fall 200 – 2009



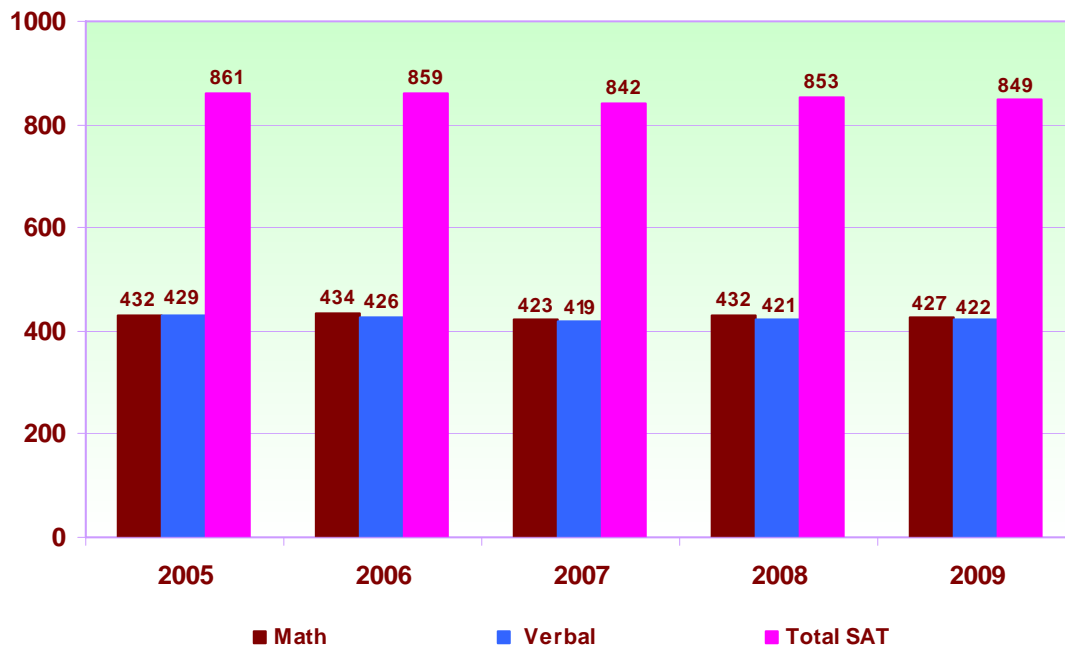
## First-Time Freshmen Average SAT Scores

Fall 2005 – 2009

	Math	Verbal	Total SAT	Score < 800	Score > 1000	Freshmen Reporting	Total FT Freshmen
<b>2005</b>	432	429	861	33.8%	13.0%	85.2%	1226
<b>2006</b>	434	426	859	35.2%	10.7%	87.1%	1021
<b>2007</b>	423	419	842	38.1%	8.8%	88.5%	1265
<b>2008</b>	432	421	853	33.0%	10.0%	93.7%	1035
<b>2009</b>	427	422	849	35.6%	8.03%	92.9%	1358

## First-Time Freshmen Average SAT Scores

Fall 2005 – 2009





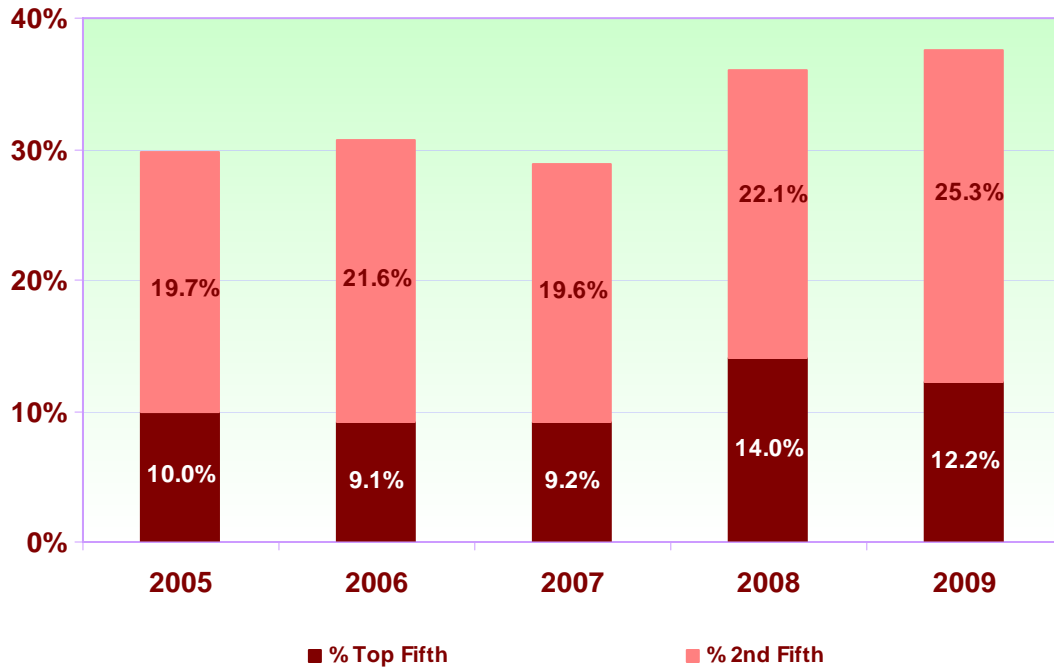
## First-Time Freshmen - High School Class Rank

Fall 2005 – 2009

	Top Fifth	Second Fifth	Third Fifth	Fourth Fifth	Bottom Fifth	Not Available
<b>2005</b>	10.0%	19.7%	24.3%	21.7%	10.6%	13.7%
<b>2006</b>	9.1%	21.6%	22.5%	23.4%	8.1%	15.2%
<b>2007</b>	9.2%	19.6%	26.2%	23.3%	21.3%	0.3%
<b>2008</b>	14.0%	22.1%	31.1%	20.4%	4.1%	8.3%
<b>2009</b>	12.2%	25.3%	28.9%	21.8%	4.1%	7.7%

## First-Time Freshmen - High School Class Rank

Fall 2005 – 2009



Note: Top fifth represents freshmen with a class rank in the top 20% of their graduating class

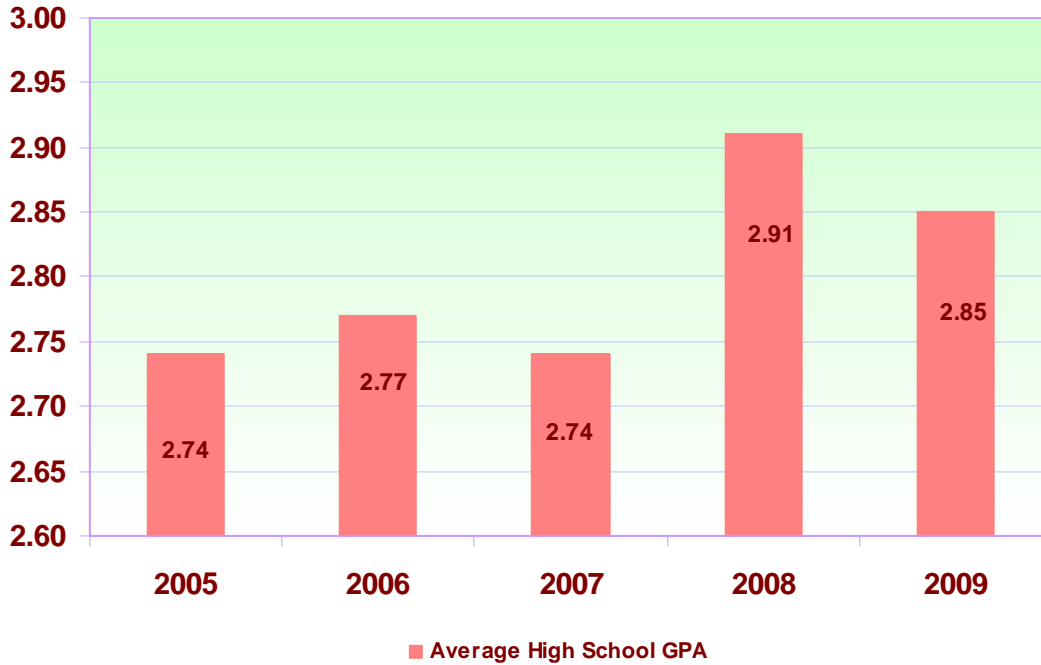
## First-Time Freshmen - High School GPAs

Fall 2005 – 2009

	Average HS GPA	GPA <= 2.0	GPA >=3.0 - 4.0	Freshmen Reporting	Total FT Freshmen
<b>2005</b>	2.74	8.5%	25.8%	89.8%	1226
<b>2006</b>	2.77	5.3%	26.7%	89.8%	1021
<b>2007</b>	2.74	7.1%	25.9%	93.4%	1265
<b>2008</b>	2.91	1.4%	34.0%	95.0%	1035
<b>2009</b>	2.85	0.3%	31.7%	95.9%	1358

## First-Time Freshmen - High School GPAs

Fall 2005 – 2009



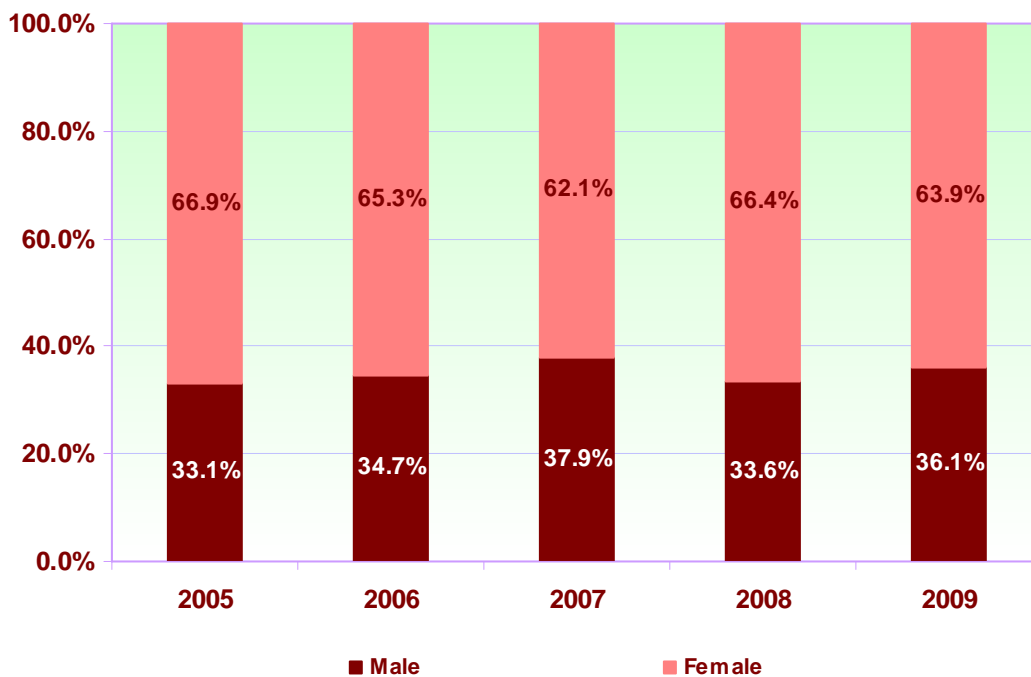
## First-Time Freshmen by Gender and Percentage

**Fall 2005 – 2009**

	Male	Percent	Female	Percent	Total
<b>2005</b>	406	33.1%	820	66.9%	1226
<b>2006</b>	354	34.7%	667	65.3%	1021
<b>2007</b>	480	37.9%	785	62.1%	1265
<b>2008</b>	348	33.6%	687	66.4%	1035
<b>2009</b>	490	36.1%	868	63.9%	1358

## First-Time Freshmen by Gender Percentage

**Fall 2005 – 2009**



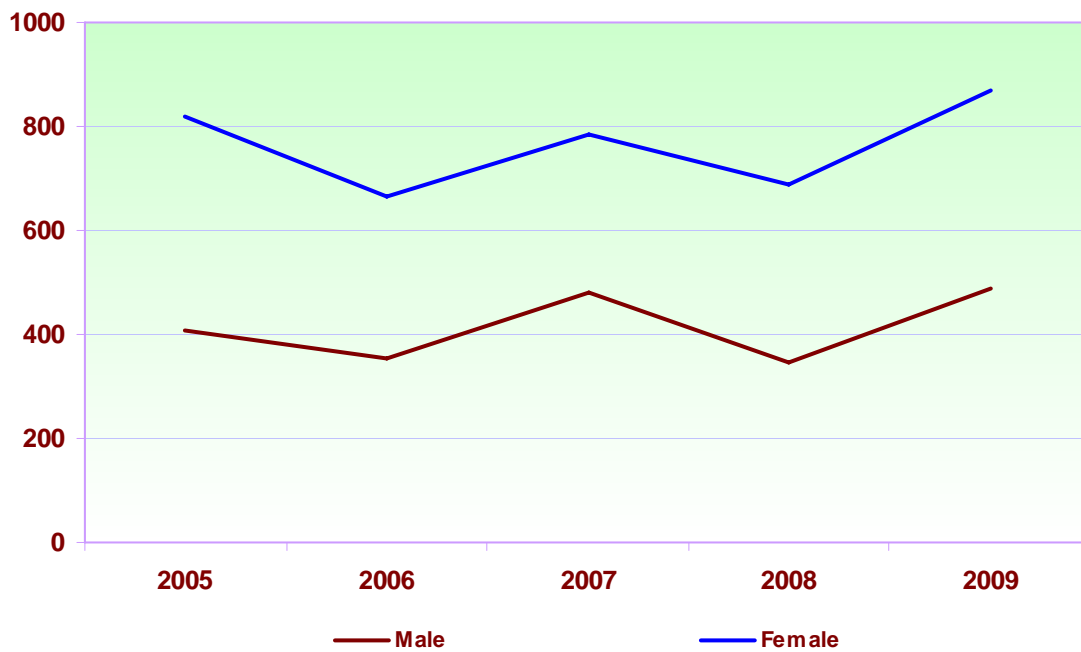
## First-Time Freshmen by Ethnicity and Gender

Fall 2005 – 2009

	Black		White		Am-Ind.		Asian		Hispanic		Other		NRA		Total		Grand Total
	M	F	M	F	M	F	M	F	M	F	M	F	M	F	M	F	
<b>2005</b>	366	740	9	12	1	3	2	3	4	7	23	52	1	3	406	820	<b>1226</b>
<b>2006</b>	307	574	12	6	0	2	1	3	2	7	31	71	1	4	354	667	<b>1021</b>
<b>2007</b>	421	707	18	9	1	3	1	4	4	3	33	58	2	1	480	785	<b>1265</b>
<b>2008</b>	303	615	11	12	0	0	2	1	3	16	26	39	3	4	348	687	<b>1035</b>
<b>2009</b>	442	812	19	8	0	5	6	2	6	10	16	28	1	3	490	868	<b>1358</b>

## First-Time Freshmen by Gender

Fall 2005 – 2009



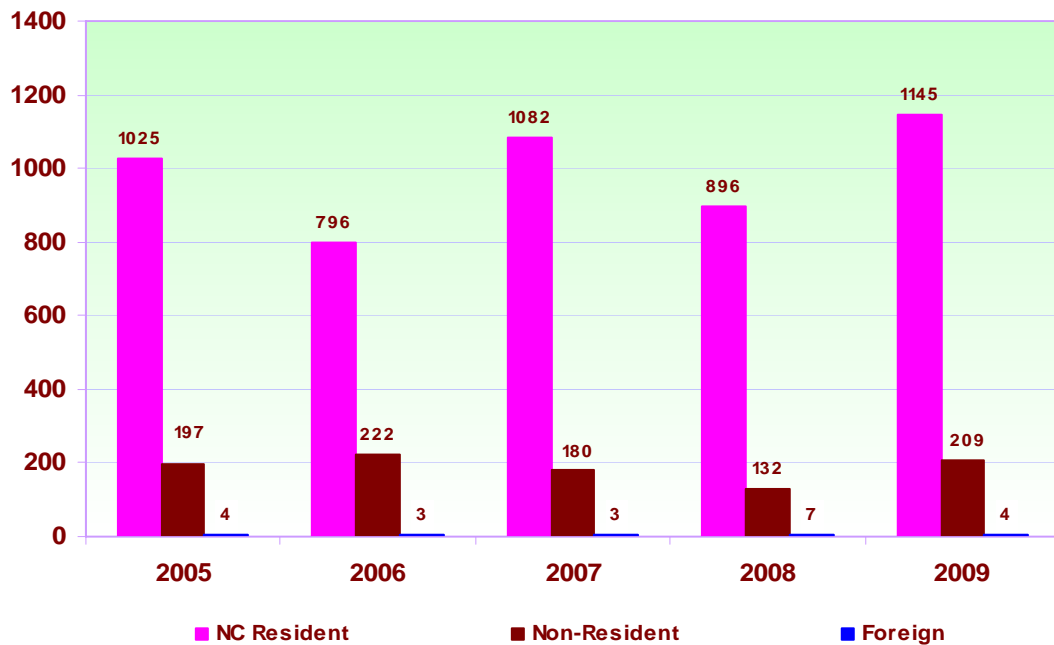
## First-Time Freshmen by Residence and Gender

Fall 2005 – 2009

	NC Resident		Non-Resident		Foreign		Total		Grand Total
	M	F	M	F	M	F	M	F	
<b>2005</b>	340	685	65	132	1	3	406	820	1226
<b>2006</b>	269	527	84	138	1	2	354	667	1021
<b>2007</b>	415	667	63	117	2	1	480	785	1265
<b>2008</b>	291	605	54	78	3	4	348	687	1035
<b>2009</b>	418	727	71	138	1	3	490	868	1358

## First-Time Freshmen by Residence and Gender

Fall 2005 – 2009



## First-Time Freshmen by State

**Fall 2009**

Name of State	Total	Name of State	Total
Alabama	0	Nevada	0
Alaska	0	New Hampshire	0
Arizona	1	New Jersey	12
Arkansas	0	New Mexico	0
California	3	New York	21
Colorado	0	North Carolina	1145
Connecticut	3	North Dakota	0
Delaware	1	Ohio	5
District of Columbia	27	Oklahoma	0
Florida	8	Oregon	0
Georgia	12	Pennsylvania	11
Hawaii	0	Rhode Island	0
Idaho	0	South Carolina	17
Illinois	2	South Dakota	0
Indiana	0	Tennessee	0
Iowa	0	Texas	0
Kansas	0	Utah	0
Kentucky	0	Vermont	0
Louisiana	0	Virginia	21
Maine	0	Washington	0
Maryland	37	West Virginia	0
Massachusetts	2	Wisconsin	2
Michigan	7	Wyoming	0
Minnesota	0		
Mississippi	1	U.S. Territories	4
Missouri	2	Foreign Countries	4
Montana	0	Unknown	10
Nebraska	0		
		<b>Total</b>	<b>1358</b>

## New Undergraduate Transfer Students by State

Fall 2009

State	Two-Year Institutions	Senior Institutions	Total Transfer
Alabama	0	0	0
Arizona	0	3	3
California	2	1	3
Connecticut	0	0	0
Delaware	0	2	2
District of Columbia	1	7	8
Florida	5	2	7
Georgia	1	3	4
Illinois	0	0	0
Indiana	0	2	2
Iowa	0	1	1
Kansas	1	1	2
Kentucky	0	0	0
Louisiana	1	1	2
Maryland	5	2	7
Massachusetts	2	0	2
Michigan	1	2	3
Mississippi	0	0	0
Missouri	0	1	1
Montana	0	1	1
Nebraska	0	0	0
Nevada	1	0	1
New Hampshire	0	0	0
New Jersey	8	2	10
New Mexico	1	2	3
New York	7	5	12
North Carolina	102	201	303
North Dakota	0	0	0
Ohio	0	0	0
Oregon	0	1	1
Pennsylvania	1	8	9
Rhode Island	0	0	0
South Carolina	4	6	10
South Dakota	0	1	1
Tennessee	0	0	0
Texas	3	0	3
Utah	0	1	1
Vermont	0	0	0
Virginia	8	7	15
Washington	0	0	0
West Virginia	0	2	2
Wisconsin	0	2	2
Wyoming	0	0	0
US Territories	0	0	0
Foreign	0	4	4
Out-of-State Unknown	0	7	7
<b>Total Transfer</b>	<b>154</b>	<b>278</b>	<b>432</b>

## In-State Transfer Students by Transferring Institutions

Fall 2004 – 2009

Public Senior Institutions	2004	2005	2006	2007	2008	2009
Appalachian State University	0	1	1	0	2	3
East Carolina University	3	3	4	1	6	6
Elizabeth City State	4	6	5	3	1	4
Fayetteville State University	7	5	3	3	2	6
North Carolina A&T	13	15	17	10	10	20
NC School of Arts	1	0	0	0	0	0
North Carolina State	10	14	6	3	5	4
UNC-Asheville	1	0	0	0	0	0
UNC-Chapel Hill	10	9	5	2	4	14
UNC-Charlotte	4	5	0	3	3	1
UNC-Greensboro	8	5	9	3	10	8
UNC-Pembroke	0	3	1	1	2	3
UNC-Wilmington	1	1	3	2	1	0
Western Carolina University	4	2	0	1	0	0
Winston-Salem State	8	14	7	4	7	6
Private Senior Institutions						
Barber-Scotia College	1	1	0	1	0	0
Barton College	0	1	0	0	0	1
Belmont Abby College	0	0	0	0	0	1
Bennett College	1	2	2	3	1	1
Brevard College	0	0	0	0	0	0
Campbell University	3	3	1	0	2	2
Chowan College	1	1	2	1	0	1
Duke University	3	0	2	0	1	1
Elon College	1	0	0	0	1	0
Gardner-Webb University	0	0	0	0	0	0
Greensboro	0	1	0	0	2	0
Guilford	0	1	0	0	1	0
High Point	0	1	0	0	0	0
Johnson C. Smith University	1	1	2	1	3	1
Lenoir-Rhyne	0	0	0	0	1	0
Livingstone College	2	1	1	0	2	5
Mars Hill	0	0	0	1	0	0
Meredith College	2	3	0	1	1	3
Methodist College	1	1	0	1	0	1
Mount Olive	1	1	1	1	1	2
N. C. Wesleyan College	1	1	0	2	0	1
Peace College	1	1	0	0	0	1
Queens College	0	0	0	1	0	0
St. Andrews	0	0	1	1	0	1
St. Augustine's College	9	11	5	4	3	8
Salem	0	0	0	1	0	0
Shaw University	8	8	5	2	6	10
Wake Forest	0	0	0	0	0	0
Private Junior Colleges						
Louisburg College	1	1	4	2	4	3
Proprietary Schools	0	0	1	1	1	3



## In-State Transfer Students by Transferring Institutions

Fall 2004 – 2009 (Continued)

Community Colleges	2004	2005	2006	2007	2008	2009
Alamance CC	4	3	6	3	4	3
Asheville-Buncombe	1	1	0	1	2	0
Beaufort CC	0	0	0	0	0	1
Blue Ridge CC	0	0	0	0	1	0
Brunswick CC	1	0	1	0	1	0
Caldwell CC	0	0	0	0	0	1
Cape Fear CC	1	0	3	0	2	3
Catawba Valley CC	0	0	1	0	1	1
Central Carolina CC	2	3	3	3	2	4
Central Piedmont CC	2	0	3	2	6	3
Coastal Carolina TCC	0	0	0	1	0	3
Coll. of Albemarle CC	0	0	0	0	2	0
Craven CC	2	2	2	0	0	3
Durham TCC	68	56	44	38	45	64
Edgecombe CC	3	0	0	0	1	0
Fayetteville TCC	2	5	1	2	3	2
Forsyth TCC	2	0	4	2	1	3
Gaston College CC	0	0	1	0	0	1
Guilford TCC	2	2	2	3	2	4
Halifax CC	3	4	0	3	3	1
Haywood CC	0	0	1	0	1	0
Isothermal CC	0	0	0	1	0	0
James Sprunt CC	0	0	1	0	0	0
Johnston CC	4	4	1	1	1	4
Lenoir CC	2	4	1	1	3	3
Martin CC	3	0	0	0	0	0
McDowell CC	0	3	0	0	0	1
Mitchell CC	0	0	2	0	2	1
Nash CC	0	0	1	2	1	2
Piedmont CC	5	7	6	3	6	5
Pitt CC	0	1	2	1	4	5
Randolph CC	0	0	0	0	0	1
Richmond CC	0	0	0	0	1	1
Roanoke-Chowan CC	0	1	0	0	1	0
Robeson CC	0	0	0	0	0	0
Rockingham CC	1	0	0	0	0	0
Rowan-Cabarrus CC	2	1	0	0	0	1
Sandhills CC	1	0	0	0	0	0
Southeastern CC	0	1	1	0	0	2
Vance-Granville CC	17	20	12	13	13	18
Wake TCC	30	32	14	24	28	39
Wayne CC	1	3	1	3	0	0
Wilkes CC	0	0	1	0	0	0
Wilson CC	0	3	1	1	3	0
Unknown In-State	0	2	5	1	0	2
<b>Total In-State Transfer</b>	<b>273</b>	<b>284</b>	<b>210</b>	<b>169</b>	<b>224</b>	<b>303</b>

## **Section 3**

# ***Fall Enrollment***

Office of Research, Evaluation and Planning

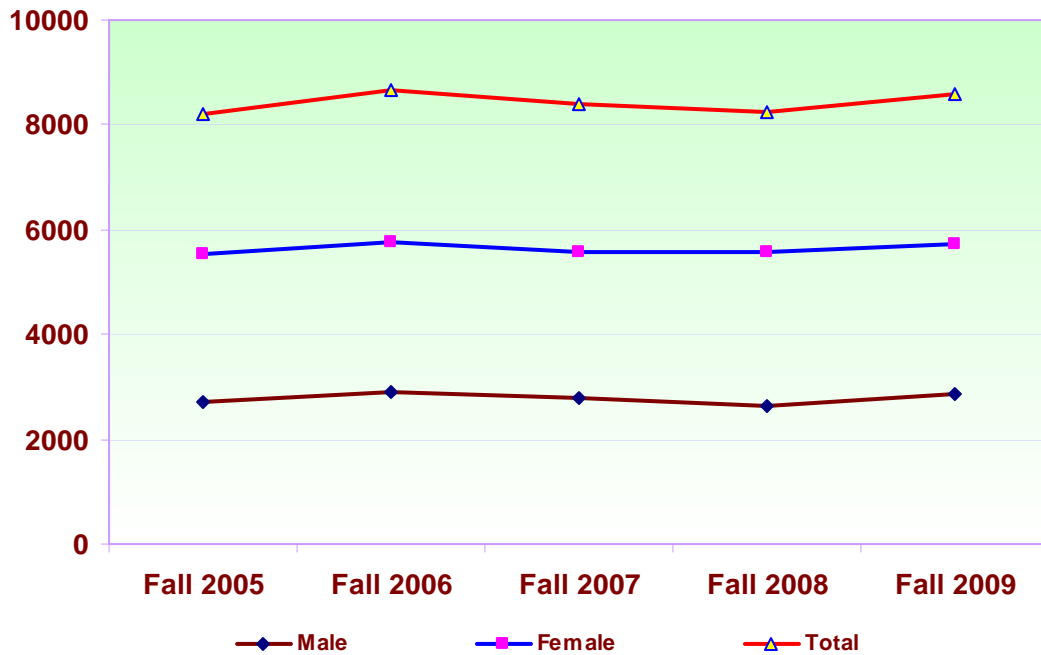
## Student Enrollment Headcount by Gender

Fall 2005 – 2009

	Male	Percent	Female	Percent	Total
<b>Fall 2005</b>	2695	32.8%	5524	67.2%	8219
<b>Fall 2006</b>	2918	33.6%	5757	66.4%	8675
<b>Fall 2007</b>	2801	33.4%	5582	66.6%	8383
<b>Fall 2008</b>	2651	33.0%	5384	67.0%	8035
<b>Fall 2009</b>	2858	33.3%	5729	66.7%	8587

## Student Enrollment Headcount by Gender

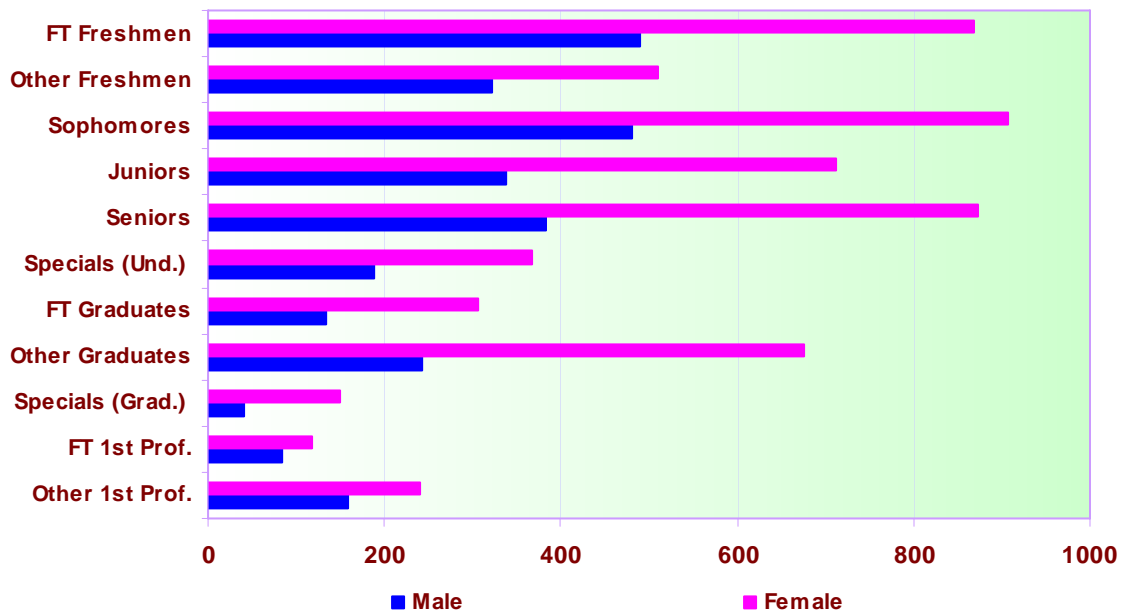
Fall 2005 – 2009



## Student Enrollment Headcount by Classification & Gender Fall 2009

Class Level	Male	Female	Total
<b>Undergraduate</b>			
First-Time Freshmen	490	868	1358
Other Freshmen	322	511	833
Sophomores	480	908	1388
Juniors	339	712	1051
Seniors	383	872	1255
Special/ Unclassified	188	368	556
<b>Sub-Total</b>	<b>2202</b>	<b>4239</b>	<b>6441</b>
<b>Graduate</b>			
First-Time Graduates	133	306	439
All Other Graduates	242	675	917
Non-Degree (Special)	40	150	190
<b>Sub-Total</b>	<b>415</b>	<b>1131</b>	<b>1546</b>
<b>First Professional</b>			
First-Time 1st Professional	83	119	202
All Other 1st Professional	158	240	398
<b>Sub-Total</b>	<b>241</b>	<b>359</b>	<b>600</b>
<b>Total Student Enrollment</b>	<b>2858</b>	<b>5729</b>	<b>8587</b>

## Student Enrollment Headcount by Classification & Gender Fall 2009



## Full-Time and Part-Time Student Enrollment Headcount by Classification, Ethnicity and Gender

**Fall 2009**

<b>Full-Time Students</b>	<b>Black</b>		<b>White</b>		<b>Am-Ind.</b>		<b>Asian</b>		<b>Hispanic</b>		<b>Others</b>		<b>Grand Total</b>	
<b>Class Level</b>	<b>M</b>	<b>F</b>	<b>M</b>	<b>F</b>	<b>M</b>	<b>F</b>	<b>M</b>	<b>F</b>	<b>M</b>	<b>F</b>	<b>M</b>	<b>F</b>	<b>M</b>	<b>F</b>
First-Time Freshmen	440	805	19	8	0	5	6	2	5	10	17	29	487	859
Other Freshmen	259	406	8	12	1	2	2	3	5	7	20	27	295	457
Sophomores	365	694	36	27	1	2	5	3	6	12	26	57	439	795
Juniors	277	513	15	22	2	1	5	5	3	4	14	55	316	600
Seniors	254	566	30	29	1	4	3	8	1	7	13	32	302	646
Unclassified	0	0	0	0	0	0	0	0	0	0	0	0	0	0
Non-Degree (Special)	31	63	4	14	0	1	0	1	2	8	2	4	39	91
<b>Sub-Total</b>	<b>1626</b>	<b>3047</b>	<b>112</b>	<b>112</b>	<b>5</b>	<b>15</b>	<b>21</b>	<b>22</b>	<b>22</b>	<b>48</b>	<b>92</b>	<b>204</b>	<b>1878</b>	<b>3448</b>
First-Time Graduates	101	199	57	82	1	1	1	5	2	4	8	16	170	307
All Other Graduates	106	242	45	98	2	1	6	11	1	10	101	132	261	494
Non-Degree (Special)	2	7	2	10	0	0	0	0	0	0	0	0	4	17
<b>Sub-Total</b>	<b>209</b>	<b>448</b>	<b>104</b>	<b>190</b>	<b>3</b>	<b>2</b>	<b>7</b>	<b>16</b>	<b>3</b>	<b>14</b>	<b>109</b>	<b>148</b>	<b>435</b>	<b>818</b>
<b>Total</b>	<b>1835</b>	<b>3495</b>	<b>216</b>	<b>302</b>	<b>8</b>	<b>17</b>	<b>28</b>	<b>38</b>	<b>25</b>	<b>62</b>	<b>201</b>	<b>352</b>	<b>2313</b>	<b>4266</b>
<b>FT Grand Total</b>	<b>5330</b>		<b>518</b>		<b>25</b>		<b>66</b>		<b>87</b>		<b>553</b>		<b>6579</b>	

<b>Part-Time Students</b>	<b>Black</b>		<b>White</b>		<b>Am-Ind.</b>		<b>Asian</b>		<b>Hispanic</b>		<b>Others</b>		<b>Grand Total</b>	
<b>Class Level</b>	<b>M</b>	<b>F</b>	<b>M</b>	<b>F</b>	<b>M</b>	<b>F</b>	<b>M</b>	<b>F</b>	<b>M</b>	<b>F</b>	<b>M</b>	<b>F</b>	<b>M</b>	<b>F</b>
First-Time Freshmen	2	7	0	0	0	0	0	0	1	0	0	2	3	9
Other Freshmen	21	47	1	3	0	0	0	0	0	2	5	2	27	54
Sophomores	33	94	5	11	0	2	0	1	2	2	1	3	41	113
Juniors	19	93	1	11	0	0	0	2	1	0	2	6	23	112
Seniors	58	185	15	28	2	0	1	2	3	3	2	8	81	226
Unclassified	0	0	0	0	0	0	0	0	0	0	0	0	0	0
Non-Degree (Special)	81	191	36	42	0	1	3	5	13	14	16	24	149	277
<b>Sub-Total</b>	<b>214</b>	<b>617</b>	<b>58</b>	<b>95</b>	<b>2</b>	<b>3</b>	<b>4</b>	<b>10</b>	<b>20</b>	<b>21</b>	<b>26</b>	<b>45</b>	<b>324</b>	<b>791</b>
First-Time Graduates	25	72	19	34	0	1	1	2	0	0	1	9	46	118
All Other Graduates	92	260	33	127	2	1	1	2	3	10	8	21	139	421
Non-Degree (Special)	25	76	9	50	1	0	0	0	1	1	0	6	36	133
<b>Sub-Total</b>	<b>142</b>	<b>408</b>	<b>61</b>	<b>211</b>	<b>3</b>	<b>2</b>	<b>2</b>	<b>4</b>	<b>4</b>	<b>11</b>	<b>9</b>	<b>36</b>	<b>221</b>	<b>672</b>
<b>Total</b>	<b>356</b>	<b>1025</b>	<b>119</b>	<b>306</b>	<b>5</b>	<b>5</b>	<b>6</b>	<b>14</b>	<b>24</b>	<b>32</b>	<b>35</b>	<b>81</b>	<b>545</b>	<b>1463</b>
<b>PT Grand Total</b>	<b>1381</b>		<b>425</b>		<b>10</b>		<b>20</b>		<b>56</b>		<b>116</b>		<b>2008</b>	

## Student Enrollment by College/School, Department, Program and Level

**Fall 2009**

College/ School	Department	Program	Undergraduate	Graduate	Total	
College of Liberal Arts	Art	Art, General	70	-	70	
		Art Secondary Education	6	-	6	
	English	English	92	19	111	
		English Secondary Education	30	-	30	
		Mass Communication	189	-	189	
	History	History	82	40	122	
		History, Secondary Education	24	-	24	
	Mod. Fore. Lang.	French Language & Literature	French Language & Literature	1	-	1
			French, Secondary Education	-	-	-
		Spanish Languages & Literatures	Spanish Languages & Literatures	13	-	13
			Spanish, Secondary Education	4	-	4
	Music	Jazz	24	19	43	
		Music	62	-	62	
		Music Education	34	-	34	
		Theatre	Theatre	48	-	48
	College of Science & Tech.	Biology	Biology, General	245	24	269
			Biology Secondary Education	1	-	1
Chemistry		Chemistry	48	8	56	
		Chemistry Secondary Education	1	-	1	
Environment Sci.		Environmental Sciences	15	-	15	
Geography		Earth & Planetary Science	-	15	15	
		Geography	9	-	9	
Math-Comp. Sci.		Computer & Information Sciences	Computer & Information Sciences	102	10	112
			Mathematics	38	6	44
		Mathematics Secondary Edu.	26	-	26	
Physics	Physics, General	18	10	28		
	Physics, Secondary Education	2	-	2		
Pharm. Sci.	Pharmaceutical Sciences	109	40	149		
College of Beh.& Soc. Sci.	Criminal Justice	Criminal Justice	544	-	544	
		Law Enforcement & Correction	-	45	45	
	Health Education	Community Health Education	87	-	87	
		Health Education	-	-	-	
	Human Sciences	Early Childhood Ed B-K Licensure	99	-	99	
		Family & Consumer Sciences	254	54	308	
		Family & Consumer Sci. Edu.	17	-	17	

Note: hyphen (-) means program not offered at this level.

## Student Enrollment by College/School, Department, Program and Level

**Fall 2009** (Continued)

College/ School	Department	Program	Undergraduate	Graduate	Total
	Physical Edu.	Athletic Training	16	-	16
		Physical Education	21	-	21
		Physical Education, General	271	28	299
		Park & Recreation Admin.	32	9	41
	Political Sci.	Political Science	255	-	255
	Psychology	Psychology	342	78	420
	Public Admin.	Public Administration	-	155	155
	Sociology	Sociology	75	26	101
	Social Work	Social Work	161	43	204
Nursing	Nursing	Nursing	509	-	509
School of	Business	Accounting	114	-	114
Business		Business Admin. & Mgmt.	740	51	791
		Computer Information System	115	-	115
		Hospitality & Tourism Admin.	115	-	115
School of	Comm. Disorders	Communication Disorders	-	69	69
Education	Counselor Edu.	Agency Counseling	-	38	38
		Career Counseling & Placement	-	6	6
		School Counseling	-	40	40
	Curriculum & Inst.	Elementary Education K-6	99	25	124
		Middle Grades (6-9)	-	3	3
		Middle Grades Education (6-9)	22	-	22
	Edu. Leadership	School Administration	-	26	26
	Edu. Tech.	Educational Technology	-	28	28
	Special Edu.	Special Education	-	-	-
		Spe. Edu. Blind & Visual Handicap	-	9	9
		Spe. Edu. Emotionally Handicap	-	-	-
		Spe. Edu. Learning Handicap	-	3	3
		Spe. Edu. Mentally Handicap	-	-	-
		Teaching in Special Education	-	66	66
School of Law	Law	Law	-	600	600
School of	Library & Info Sci.	Information Sciences	-	65	65
Lib. & Info Sci.		Library Sciences	-	298	298
Unknown	Unknown Dept.	Undeclared Major Program	697	-	697
		Special	556	190	746
			<b>6441</b>	<b>2146</b>	<b>8587</b>

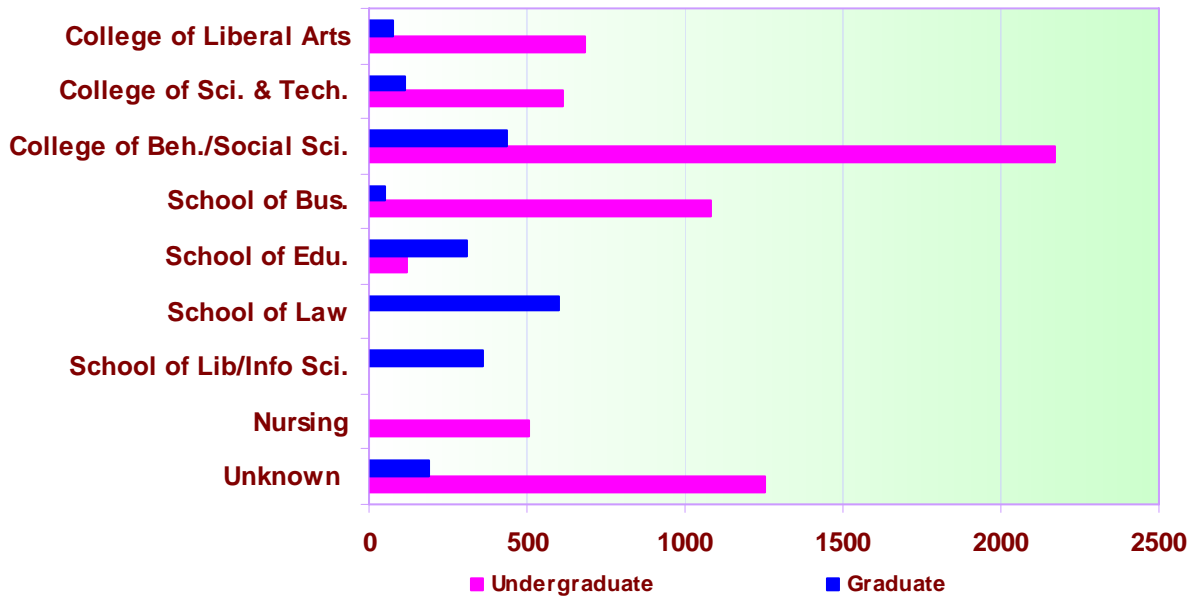
## Student Enrollment by College/School and Level

**Fall 2009**

College/School	Undergraduate	Graduate	Total
College of Liberal Arts	686	78	764
College of Science & Tech.	614	113	727
College of Beh. & Social Sci.	2174	438	2612
School of Business	1084	51	1135
School of Education	121	313	434
School of Law	-	600	600
School of Lib & Info Sci.	-	363	363
Nursing	509	-	509
Unknown & Special	1253	190	1443
<b>Total</b>	<b>6441</b>	<b>2146</b>	<b>8587</b>

## Student Enrollment by College/School and Level

**Fall 2009**





## Student Credit Hours by College/School, Department and Level

**Fall Semester, 2009**

College/ School	Department	Undergraduate	Graduate	Total
College of Liberal Arts	Aerospace Studies	25.5	-	25.5
	Army ROTC	63	-	63
	Art	2,768	-	2,768
	Drama & Theatre	2,378	-	2,378
	English	10,563	195	10,758
	History	4,146	277	4,423
	Military Science	6	-	6
	Modern Foreign Language	5,334	-	5,334
	Music	2,143.5	157	2,300.5
	College of Beh. & Social Sci.	Criminal Justice	2,521	285
Political Science		1,983	63	2,046
Public Administration		381	1,233	1,614
Psychology		3,145	467.5	3,612.5
Sociology		4,719	166	4,885
Social Work		187	672	859
Human Sciences		6,567	295.5	6,862.5
Health Education		2,870	-	2,870
Physical Edu. & Park Recre.		4,642	222.5	4,864.5
Public Health Education		144	-	144
College of Science & Tech.	Biology	5,664	193	5,857
	Chemistry	2,329	57	2,386
	Math & Computer Sci	7,646	137	7,783
	Environmental Science	76	-	76
	Geography	945	100	1,045
	Physics	1,199	75	1,274
	Pharmaceutical Sci.	82	290	372
	Business Administration	8,837	495	9,332
School of Edu.	Education	3,742	3,445	7,187
School of Law	Law	-	7,915	7,915
School of Lib.& Info.	Library & Information Sci.	-	2,424	2,424
Nursing	Nursing	1,679.5	-	1,679.5
Unknown	Other / Missing	126.5	88	214.5
<b>Total</b>		<b>86,912</b>	<b>19,252.5</b>	<b>106,164.5</b>

## Student Credit Hours by College/School, Department and Level

**Spring Semester, 2010**

College/ School	Department	Undergraduate	Graduate	Total
College of Liberal Arts	Aerospace Studies	18	-	18
	Army ROTC	47	-	47
	Art	2,611	-	2,611
	Drama & Theatre	2,489	-	2,489
	English	9,981	194	10,175
	History	3,750	297.5	4,047.5
	Military Science	9	-	9
	Modern Foreign Language	4,599	-	4,599
	Music	2,126	147	2,273
College of Beh. & Social Sci	Criminal Justice	2,664	228	2,892
	Political Science	2,043	105	2,148
	Public Administration	462	1,013	1,475
	Psychology	2,576	506	3,082
	Sociology	4,217	240	4,457
	Social Work	199	574	773
	Human Sciences	5,335	221.5	5,556.5
	Health Education	2,593.50	-	2,593.5
	Physical Edu. & Park Recre.	4,148	220.5	4,368.5
	Public Health Education	223	-	223
College of Science & Tech.	Biology	5,439	178	5,617
	Chemistry	2,095	123.5	2,218.5
	Math & Computer Sci.	6,913	114	7,027
	Environmental Science	134	27	161
	Geography	867	82	949
	Physics	1,227	85	1,312
	Pharmaceutical Sciences	227	261	488
	Business Administration	9,010	372	9,382
School of Bus.	Education	3,594	3253.5	6,847.5
School of Edu.	Law	-	7,835	7,835
School of Law	Library & Info Sci.	-	2,580	2,580
School of Lib.& Info.	Nursing	2,231.50	-	2,231.5
Nursing	Other & Missing	67	63.5	130.5
Unknown				
<b>Total</b>		<b>81,895</b>	<b>18,721</b>	<b>100,616</b>

## Student Credit Hours by College/School, Department and Level

Fall Semester, 2009 and Spring Semester, 2010

College/School	Department	Undergraduate	Graduate	Total
College of Liberal Arts	Aerospace Studies	43.5	-	43.5
	Army ROTC	110	-	110
	Art	5,379	-	5,379
	Drama & Theatre	4,867	-	4,867
	English	20,544	389	20,933
	History	7,896	574.5	8,470.5
	Military Science	15	-	15
	Modern Foreign Language	9,933	-	9,933
	Music	4,269.5	304	4,573.5
College of Beh. & Social Sci	Criminal Justice	5,185	513	5,698
	Political Science	4,026	168	4,194
	Public Administration	843	2,246	3,089
	Psychology	5,721	973.5	6,694.5
	Sociology	8,936	406	9,342
	Social Work	386	1,246	1,632
	Human Sciences	11,902	517	12,419
	Health Education	5,463.5	-	5,463.5
	Physical Edu. & Park Recre.	8,790	443	9,233
College of Science & Tech.	Public Health Education	367	-	367
	Biology	11,103	371	11,474
	Chemistry	4,424	180.5	4,604.5
	Math & Computer Sci.	14,559	251	14,810
	Environmental Science	210	27	237
	Geography	1,812	182	1,994
	Physics	2,426	160	2,586
	Pharmaceutical Sci.	309	551	860
	Business Administration	17,847	867	18,714
School of Edu.	Education	7,336	6,698.5	14,034.5
School of Law	Law	-	15,750	15,750
School of Lib.& Info.	Library & Info Sci.	-	5,004	5,004
Nursing	Nursing	3,911	-	3,911
Unknown	Other / Missing	193.5	151.5	345
<b>Total</b>		<b>168,807</b>	<b>37,973.5</b>	<b>206,780.5</b>

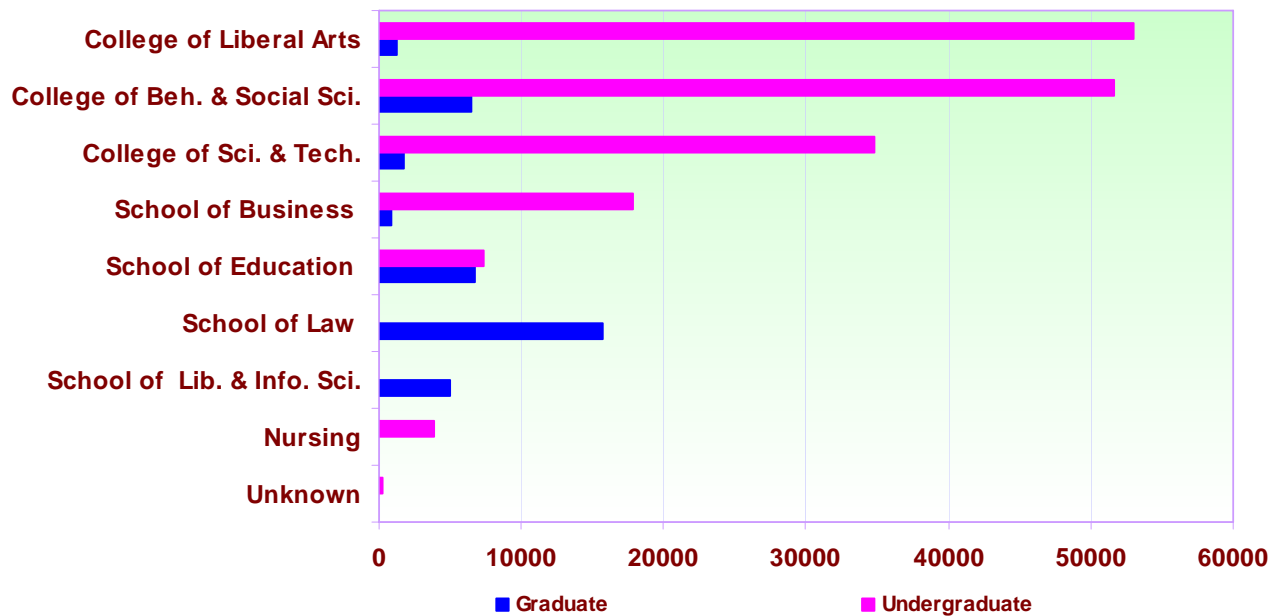
## Student Credit Hours by College/School and Level

Fall Semester, 2009 and Spring Semester, 2010

College/School	Undergraduate	Graduate	Total
College of Liberal Arts	53,057	1,267.5	54,324.5
College of Behav. & Social Sci.	51,619.5	6,512.5	58,132
College of Science & Tech.	34,843	1,722.5	36,565.5
School of Business	17,847	867	18,714
School of Education	7,336	6,698.5	14,034.5
School of Law	-	15,750	15,750
School of Library & Info. Sci.	-	5,004	5,004
Nursing	3,911	-	3,911
Unknown	193.5	151.5	345
<b>Total</b>	<b>168,807</b>	<b>37,973.5</b>	<b>206,780.5</b>

## Student Credit Hours by College/School and Level

Fall Semester, 2009 and Spring Semester, 2010



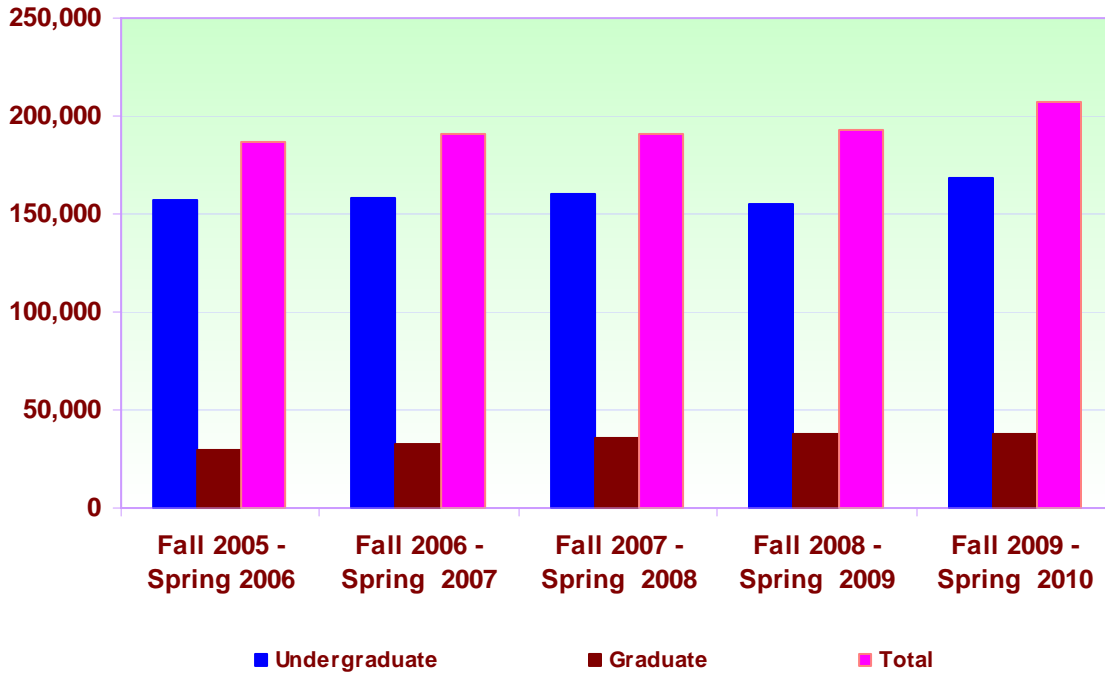
## Student Credit Hours by Level

Fall 2005 - Spring 2010

	Undergraduate	Graduate	Total
Fall 2005 - Spring 2006	157,284	29,946	187,230
Fall 2006 - Spring 2007	158,009	33,121	191,130
Fall 2007 - Spring 2008	160,338	35,407	195,745
Fall 2008 - Spring 2009	155,240	37,273	192,513
Fall 2009 - Spring 2010	168,807	37,973.5	206,780.5

## Student Credit Hours by Level

Fall 2005 - Spring 2010



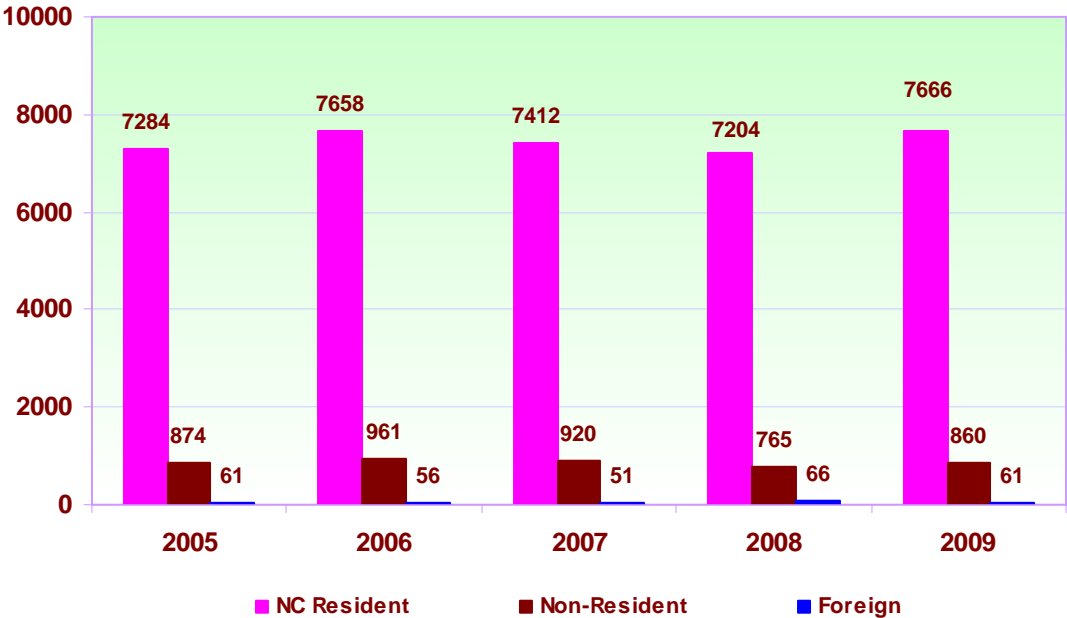
### Student Enrollment by Resident

Fall 2005 - 2009

	NC Resident	Non-Resident	Foreign	Total
Fall 2005	7284	874	61	8219
Fall 2006	7658	961	56	8675
Fall 2007	7412	920	51	8383
Fall 2008	7204	765	66	8035
Fall 2009	7666	860	61	8587

### Student Enrollment by Resident

Fall 2005 – 2009



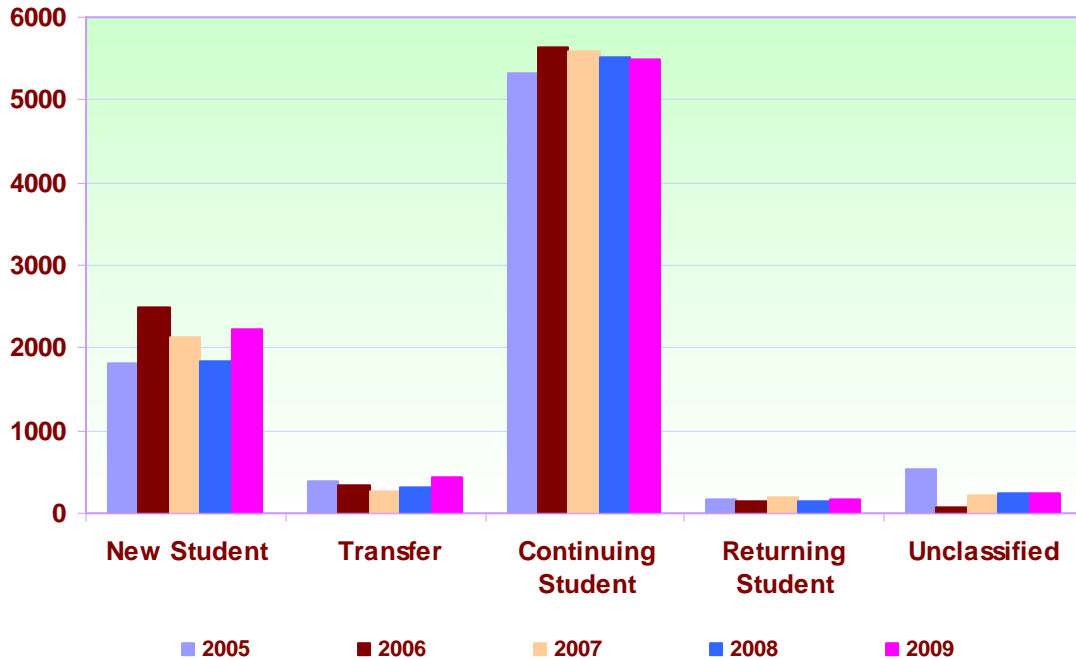
## Student Headcount by Enrollment Category

Fall 2005 - 2009

	New Student	New Transfer	Continuing Student	Returning Student	Unclassified Student	Total
<b>Fall 2005</b>	1816	386	5332	161	524	8219
<b>Fall 2006</b>	2486	327	5639	146	77	8675
<b>Fall 2007</b>	2120	258	5591	198	216	8383
<b>Fall 2008</b>	1828	308	5521	148	230	8035
<b>Fall 2009</b>	2234	432	5499	174	248	8587

## Student Headcount by Enrollment Category

Fall 2005 - 2009



## Student Enrollment by State and Gender

Fall 2009

State Name	Male	Female	Total	State Name	Male	Female	Total
Alabama	0	2	2	Montana	0	1	1
Alaska	0	2	2	Nebraska	0	0	0
Arizona	2	0	2	Nevada	1	0	1
Arkansas	0	0	0	New Hampshire	0	0	0
California	3	8	11	New Jersey	17	27	44
Colorado	0	1	1	New Mexico	0	0	0
Connecticut	6	6	12	New York	18	37	55
Delaware	2	2	4	North Carolina	2530	5136	7666
Washington DC	27	49	76	North Dakota	0	0	0
Florida	13	16	29	Ohio	4	9	13
Georgia	20	45	65	Oklahoma	0	0	0
Hawaii	0	1	1	Oregon	0	1	1
Idaho	0	0	0	Pennsylvania	9	17	26
Illinois	2	7	9	Rhode Island	0	1	1
Indiana	0	0	0	South Carolina	16	25	41
Iowa	0	1	1	South Dakota	0	0	0
Kansas	0	0	0	Tennessee	3	2	5
Kentucky	1	2	3	Texas	2	1	3
Louisiana	1	1	2	Utah	0	0	0
Maine	0	1	1	Vermont	0	2	2
Maryland	43	83	126	Virginia	34	60	94
Massachusetts	4	6	10	Washington	0	2	2
Michigan	9	7	16	West Virginia	1	1	2
Minnesota	0	1	1	Wisconsin	1	3	4
Mississippi	1	1	2	Wyoming	0	0	0
Missouri	4	2	6	U.S. Territories	0	8	8
				Foreign Countries	25	36	61
				Unknown	59	116	175
				<b>TOTAL</b>	<b>2858</b>	<b>5729</b>	<b>8587</b>



## North Carolina Students by County and Gender Fall 2009

County	Male	Female	Total	County	Male	Female	Total
Alamance	24	44	68	Lee	9	24	33
Alexander	0	2	2	Lenoir	21	38	59
Anson	5	8	13	Lincoln	4	3	7
Ashe	0	1	1	Macon	0	2	2
Beaufort	14	9	23	Madison	0	2	2
Bertie	8	16	24	Martin	5	10	15
Bladen	7	9	16	McDowell	2	5	7
Brunswick	7	16	23	Mecklenburg	174	288	462
Buncombe	7	25	32	Mitchell	0	0	0
Burke	3	5	8	Montgomery	1	8	9
Cabarrus	7	22	29	Moore	9	9	18
Caldwell	1	2	3	Nash	22	39	61
Camden	2	3	5	New Hanover	14	49	63
Carteret	0	8	8	Northampton	8	34	42
Caswell	4	6	10	Onslow	14	39	53
Catawba	6	12	18	Orange	78	144	222
Chatham	8	16	24	Pamlico	1	8	9
Cherokee	0	3	3	Pasquotank	7	11	18
Chowan	2	5	7	Pender	5	9	14
Cleveland	7	12	19	Perquimans	3	4	7
Columbus	11	23	34	Person	17	55	72
Craven	16	28	44	Pitt	29	60	89
Cumberland	67	128	195	Polk	0	2	2
Currituck	0	2	2	Randolph	13	19	32
Dare	2	3	5	Richmond	2	6	8
Davidson	17	26	43	Robeson	13	39	52
Davie	0	0	0	Rockingham	3	19	22
Duplin	21	19	40	Rowan	13	27	40
Durham	835	1776	2611	Rutherford	2	7	9
Edgecombe	25	48	73	Sampson	16	26	42
Forsyth	66	124	190	Scotland	6	12	18
Franklin	40	33	73	Stanly	2	2	4
Gaston	9	35	44	Stokes	0	3	3
Gates	2	4	6	Surry	0	2	2
Graham	0	2	2	Swain	0	0	0
Granville	53	88	141	Transylvania	0	0	0
Greene	4	4	8	Tyrrell	3	3	6
Guilford	73	151	224	Union	13	25	38
Halifax	20	59	79	Vance	33	72	105
Harnett	9	30	39	Wake	483	977	1460
Haywood	1	1	2	Warren	21	43	64
Henderson	1	2	3	Washington	7	9	16
Hertford	15	32	47	Watauga	2	5	7
Hoke	3	14	17	Wayne	25	42	67
Hyde	0	0	0	Wilkes	0	3	3
Iredell	11	17	28	Wilson	20	33	53
Jackson	0	2	2	Yadkin	1	1	2
Johnston	11	31	42	Yancey	0	0	0
Jones	5	12	17				
<b>In-State Total</b>					<b>2530</b>	<b>5136</b>	<b>7666</b>

## Student Enrollment by Level, Age and Gender Fall 2009

Class Level	Age Range	Full-time		Part-time		Grand Total
		Men	Women	Men	Women	
Undergraduate	< 18	18	69	61	147	295
	18	408	721	6	6	1141
	19	322	593	11	6	932
	20	288	501	24	16	829
	21	231	439	18	20	708
	22	179	292	7	26	504
	23	89	143	17	25	274
	24	73	95	13	32	213
	25-30	146	280	56	137	619
	31-35	57	125	51	111	344
	36-40	33	81	19	91	224
	41-50	25	86	28	119	258
	51-64	9	22	11	49	91
	65+	0	1	1	3	5
	Unknown	0	0	1	3	4
<b>Sub-Total</b>		<b>1878</b>	<b>3448</b>	<b>324</b>	<b>791</b>	<b>6441</b>
Graduate & 1 <sup>st</sup> Professional	< 18	0	0	0	0	0
	18	0	0	0	0	0
	19	0	0	0	0	0
	20	0	0	0	0	0
	21	3	9	0	0	12
	22	20	77	2	7	106
	23	41	113	6	16	176
	24	54	92	11	36	193
	25-30	174	283	72	263	792
	31-35	55	97	45	103	300
	36-40	39	62	30	80	211
	41-50	33	62	37	101	233
	51-64	15	23	15	64	117
	65+	1	0	3	2	6
	Unknown	0	0	0	0	0
<b>Sub-Total</b>		<b>435</b>	<b>818</b>	<b>221</b>	<b>672</b>	<b>2146</b>
<b>Total</b>		<b>2313</b>	<b>4266</b>	<b>545</b>	<b>1463</b>	<b>8587</b>

**ACADEMIC PROGRAM INVENTORY  
NCCU Active Programs**

<b>CIP CODE</b>	<b>Division and Program Title</b>	<b>Degree</b>	<b>CIP Discipline</b>
030104	<b>Environmental Science (New)</b> Environmental Science	BS	030104 027 000
090102	<b>Mass Communication</b> Mass Communication	BA	090102 018000
110401	<b>Information Sciences /Studies</b> Computer Information Systems	BS	110401 027000
	Information Sciences	MIS	110401 113 000
110701	<b>Computer Sciences</b> Computer Sciences	BS	110701 027 000
	Computer Sciences	MS	110701 123000
130301	<b>Curriculum and Instruction</b> Curriculum & Instruction (Elementary & Middle Grades)	MED	130301 109 413
130409	<b>Secondary School Administration (New)</b> School Administration	MSA	130409 124 000
130501	<b>Educational / Instructional Media Design</b> Educational Technology	MA	130501 102 029
131001	<b>Special Education and Teaching, General</b> Master of Arts in Teaching in Special Education	MAT	131001 106 321
131005	<b>Education /Teaching of Emotional Disturbances</b> Special Education, Emotional Handicapped	MED	131005 109 006
131006	<b>Education /Teaching of Mental Retardation</b> Special Education, Blind and Mentally Handicapped	MED	131006 109 037
131009	<b>Education /Teaching of Vision Impairments</b> Special Education, Blind and Visually Handicapped	MED	131009 109 061
131011	<b>Education /Teaching of Spec. Learning Disability</b> Special Education, Learning Disability	MED	131011 109056
131101	<b>Counselor Edu. / School Counseling &amp; Guidance</b> School Counseling	MA	131101 102 011
131102	<b>College Student Counseling &amp; Personnel Service</b> Career Counseling and Placement	MA	131102 102 000
	Agency Counseling	MA	131102 102 501
131202	<b>Elementary Education and Teaching</b> Elementary Education (K-6)	BA	131202 018 017
	Elementary Education (K-6)	MED	131202 109 017
131203	<b>Jr. High/Intermed. / Middle School Edu. Teaching</b> Middle Grades Education (6-9)	BA	131203 018 200
	Middle Grades (6-9)	MED	131203 109 220
131209	<b>Kindergarten/ Pre-School Education &amp; Teaching</b> Early Childhood Ed (B-K) Licensure	BS	131209 027 008
131302	<b>Art Teacher Education</b> Art Education	BA	131302 018 004
131305	<b>English/Language Arts Teacher Education</b> English, Secondary Education	BA	131305 018018
	English, Secondary Education	MA	131305 102 018

**ACADEMIC PROGRAM INVENTORY  
NCCU Active Programs**

<b>CIP CODE</b>	<b>Division and Program Title</b>	<b>Degree</b>	<b>CIP Discipline</b>
131307	<b>Health Teacher Education</b> Health Education	BS	131307 027 023
131311	<b>Mathematics Teacher Education</b> Mathematics, Secondary Education	BS	131311 027 034
	Mathematics, Secondary Education	MS	131311 123 034
131312	<b>Music Teacher Education</b> Music Education	BA	131312 018 039
131314	<b>Physical Education Teaching and Coaching</b> Physical Education	BS	131314 027 040
	Physical Education (K-12)	MS	131314 123 040
131322	<b>Biology Teacher Education</b> Biology, Secondary Education	BS	131322 027 007
	Biology, Secondary Education	MS	131322 123 007
131323	<b>Chemistry Teacher Education</b> Chemistry, Secondary Education	BS	131323 027 010
	Chemistry, Secondary Education	MS	131323 123 010
131324	<b>Drama &amp; Dance Teacher Education</b> Theatre Arts Education, K-12	BA	131324 018 060
131325	<b>French Language Teacher Education</b> French, Secondary Education	BA	131325 018 020
131328	<b>History Teacher Education</b> History, Secondary Education	BA	131328 018 027
	History, Secondary Education	MA	131328 102 027
131329	<b>Physics Teacher Education</b> Physics, Secondary Education	BS	131329 027 041
131330	<b>Spanish Language Teacher Education</b> Spanish, Secondary Education	BA	131330 018 055
160901	<b>French Language and Literature</b> French	BA	160901 018 000
160905	<b>Spanish Language and Literature</b> Spanish	BA	160905 018 000
190101	<b>Family &amp; Consumer Sci. / Human Sci., General</b> Family and Consumer Sciences	BS	190101 027 000
	Family and Consumer Sciences	MS	190101 123 000
220101	<b>Law (LL.B., J.D.)</b> Law	JD	220101 303 000
	Law	LLB	220101 304 000
230101	<b>English Language and Literature, General</b> English	BA	230101 018 000
	English	MA	230101 102 000
250101	<b>Library Science / Librarianship</b> Library science	MLS	250101 116 000
260101	<b>Biology / Biological Sciences, General</b> Biology	BS	260101 027 000
	Biology	MS	260101 123 000

**ACADEMIC PROGRAM INVENTORY  
NCCU Active Programs**

<b>CIP CODE</b>	<b>Division and Program Title</b>	<b>Degree</b>	<b>CIP Discipline</b>
<b>260102</b>	<b>Biomedical Sciences, General (New)</b>		
	Pharmaceutical Sciences	BS	260102 027 000
	Pharmaceutical Sciences	MS	260102 123 000
<b>270101</b>	<b>Mathematics, General</b>		
	Mathematics	BS	270101 027 000
	Mathematics	MS	270101 123 000
<b>310301</b>	<b>Parks, Recreation &amp; Leisure Facilities Mgmt</b>		
	Recreation Administration	BS	310301 027 000
	Recreation Administration	MS	310301 123 000
	Recreational Management	PB	310301 501 000
<b>310501</b>	<b>Health and Physical Education, General</b>		
	Physical Education, General	BS	310501 027 000
	Physical Education	MS	310501 123 000
<b>400501</b>	<b>Chemistry, General</b>		
	Chemistry	BS	400501 027 000
	Chemistry	MS	400501 123 000
<b>400601</b>	<b>Geology/ Earth Sciences</b>		
	Earth Sciences	MS	400601 123 000
<b>400801</b>	<b>Physics, General</b>		
	Physics	BS	400801 027 000
	Physics	MS	400801 123 000
<b>420101</b>	<b>Psychology, General</b>		
	Psychology	BA	420101 018 000
	Psychology	MA	420101 102 000
<b>430103</b>	<b>Criminal Justice / Law Enforcement Admin.</b>		
	Law Enforcement and Corrections	MS	430103 123 000
<b>430104</b>	<b>Criminal Justice / Safety Studies</b>		
	Criminal Justice	BS	430104 027 000
<b>440401</b>	<b>Public Administration</b>		
	Public Administration	MPA	440401 118 000
<b>440701</b>	<b>Social Work</b>		
	Social Work	BSW	440701 043 000
	Social Work	MSW	440701 138 000
<b>450701</b>	<b>Geography</b>		
	Geography	BS	450701 027 000
<b>451001</b>	<b>Political Science and Government, General</b>		
	Political Science	BA	451001 018 000
<b>451101</b>	<b>Sociology</b>		
	Sociology	BA	451101 018 000
	Sociology	MA	451101 102 000
<b>500501</b>	<b>Drama and Dramatics/Theater Arts, General</b>		
	Theatre	BA	500501 018 000
<b>500701</b>	<b>Art/Art Studies, General</b>		
	Art	BA	500701 018 000
<b>500901</b>	<b>Music, General</b>		
	Music	BA	500901 018 000

**ACADEMIC PROGRAM INVENTORY  
NCCU Active Programs**

<b>CIP CODE</b>	<b>Division and Program Title</b>	<b>Degree</b>	<b>CIP Discipline</b>
<b>500910</b>	<b>Jazz/ Jazz Studies</b>		
	Jazz	BM	500910 025 523
	Jazz	MA	500910 117 000
<b>510201</b>	<b>Communication Disorders, General</b>		
	Communication Disorders	MED	510201 109 000
<b>510913</b>	<b>Athletic Training /Trainer</b>		
	Athletic Training	BS	510913 027 000
<b>511601</b>	<b>Nursing - (R. N. Training)</b>		
	Nursing	BSN	511601 039 000
<b>512207</b>	<b>Public Health Education and Promotion</b>		
	Community Health Education	BS	512207 027 000
<b>512309</b>	<b>Therapeutic Recreation / Recreational Therapy</b>		
	Adapted Physical Education	MS	512309 123 000
<b>520201</b>	<b>Business Administration &amp; Management, General</b>		
	Business Administration	BBA	520201 021 000
	Business Administration	MBA	520201 107 000
<b>520301</b>	<b>Accounting</b>		
	Accounting	BBA	520301 021 000
<b>520901</b>	<b>Hospitality Administration / Management, General</b>		
	Hospitality and Tourism Administration	BS	520901 027 000
<b>540101</b>	<b>History, General</b>		
	History	BA	540101 018 000
	History	MA	540101 102 000

## Section 4

# *Graduates*

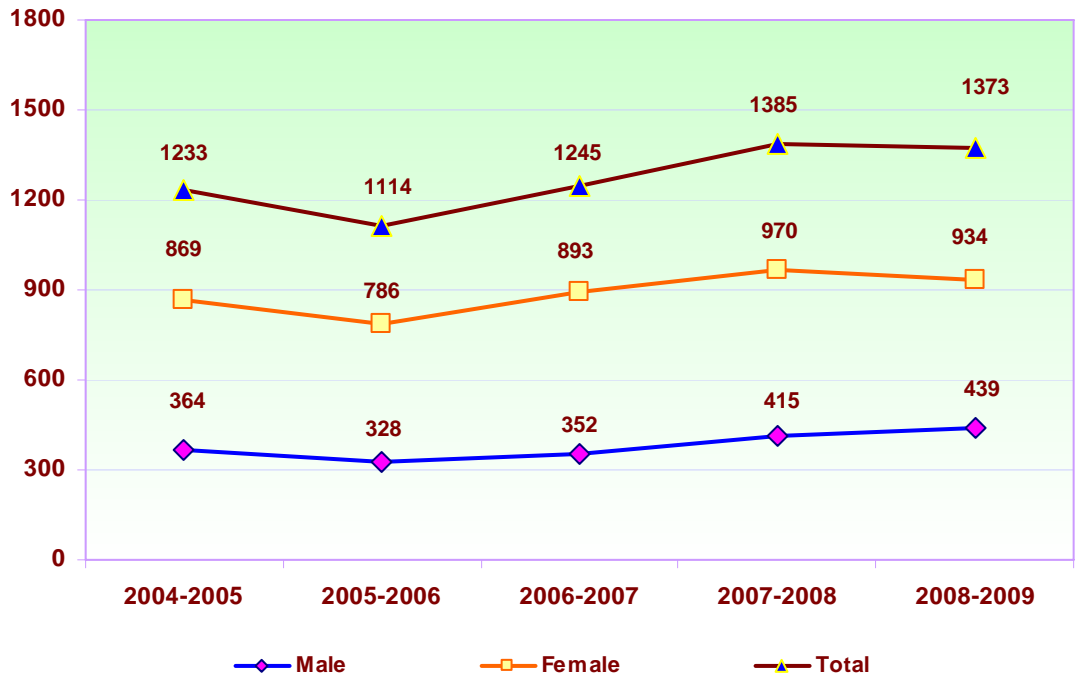
Office of Research, Evaluation and Planning

## Degrees Awarded by Gender

	Male	Percent	Female	Percent	Total
<b>2004- 2005</b>	364	29.5%	869	70.5%	1233
<b>2005- 2006</b>	328	29.4%	786	70.6%	1114
<b>2006- 2007</b>	352	28.3%	893	71.7%	1245
<b>2007- 2008</b>	415	30.0%	970	70.0%	1385
<b>2008- 2009</b>	439	32.0%	934	68.0%	1373

Note: Degrees awarded are counted by fiscal year (July 1<sup>st</sup> to June 30<sup>th</sup>). Counts may be duplicated based on double-major degrees.

## Degrees Awarded by Gender





## Degrees Awarded by Level and Program

2008 - 2009 Fiscal Year

Undergraduate Program	2008 - 2009	Graduate Program	2008 - 2009
Accounting	13	Biology /Biological Sciences	9
Art & Art Studies	7	Biology Teacher Education	0
Art Teacher Education	2	Biomedical Sciences	3
Athletic training / Trainer	1	Business Admin. / Management	23
Biology	41	Chemistry, General	6
Biological Sciences	2	Chemistry Teacher Education	0
Business Admin. & Management	98	Computer Sciences	0
Chemistry	8	Communication Disorder, General	34
Computer Science	3	College Student Counseling	19
Criminal Justice / Safety Studies	97	Counselor Edu. / School Counseling	10
Drama & Theatre Arts	8	Criminal Justice / Law Enforcement	11
Drama & Dance Teacher Edu	0	Curriculum & Instruction	20
Elementary Education and Teaching	33	Educational / Instru. Media Design	5
English Language and Literature	14	Elementary Education and Teaching	0
English / Language Art Teacher Edu.	3	English Language and Literature	3
Environmental Sciences	7	English / Language Arts, Edu.	0
Family & Consumer Sci. / Human Sci.	50	Family/ Consumer Sci. / Human Sci.	6
Family & Consum. Sci. / Home Econ.	0	Family/ Consumer Sci./ Home Econ.	0
French Language and Literature	1	Geology / Earth Sciences	2
French Language Teacher Education	0	Health and Physical Education	3
Geography	4	History, General	7
Health and Physical Education	26	History Teacher education	0
History	17	Information Sciences / Studies	24
History Teacher Education	4	Jr. High / Middle School Edu.	0
Hospitality & Tourism Administration	27	Law	191
Information Sciences / Studies	17	Library Science / Librarianship	83
Jazz / Jazz Studies	2	Mathematics, General	3
Jr. High / Middle School Edu.	5	Mathematics Teacher Education	0
Kindergarten / Preschool Education	9	Park, Recreation and Leisure Facility	2
Mass Communication / Media Studies	41	Physical Education	0
Mathematics	7	Physical Edu. Teaching / Coaching	0
Mathematics Teacher Education	0	Psychology, General	6
Music	8	Public Administration	51
Music Teacher Education	0	Secondary School Adm./ Principal	24
Nursing	64	Sociology	2
Park / Recreation Administration	12	Special Edu., Blind & Visually	1
Physical Edu. Teaching and Coaching	3	Special Edu., Learning Disability	1
Physics	2	Special Edu., Emotionally	0
Political Sciences & Government	58	Special Edu., Mentally Handicapped	0
Psychology	39	Special Education & Teaching,	15
Public Health Edu. & Promotion	27		
Sociology	15		
Social Work	24		
Spanish Language and Literature	9		
Spanish Language Teacher Education	1		
<b>Total</b>	<b>809</b>	<b>Total</b>	<b>564</b>

## Degrees Awarded by Level and Department

<b>Undergraduate Degree</b>	<b>2004- 2005</b>	<b>2005- 2006</b>	<b>2006- 2007</b>	<b>2007- 2008</b>	<b>2008- 2009</b>
Art / Education	19	21	11	12	9
Biology / Education	28	34	35	37	41
Biomedical Sciences	0	0	0	0	2
Chemistry / Education	7	2	5	8	8
Criminal Justice	83	61	84	81	97
English /Mass Communication	50	48	55	70	58
Geography / Environ. Sci.	4	4	12	9	11
Public Health Ed/ Physical Ed	22	10	22	50	53
History	28	36	27	40	21
Human Sci. /Family/Consumer	62	52	66	69	59
Math / Computer	15	15	17	10	10
Modern F. Language / Edu.	3	7	7	10	11
Music & Jazz	16	10	20	12	10
Nursing	41	42	48	46	64
Physical Edu./ Athletic Training	35	34	16	29	16
Physics	1	0	2	4	2
Political Science	62	48	55	57	58
Psychology	57	51	51	61	39
Social Work	30	33	18	35	24
Sociology	23	16	23	18	15
Theatre / Drama Edu.	9	2	6	11	8
Business Adm./ Info System	163	149	145	148	155
Education / Special Edu.	37	38	49	37	38
<b>Total</b>	<b>795</b>	<b>713</b>	<b>774</b>	<b>854</b>	<b>809</b>
<b>Graduate Degree</b>	<b>2004- 2005</b>	<b>2005- 2006</b>	<b>2006- 2007</b>	<b>2007- 2008</b>	<b>2008- 2009</b>
Biology	4	5	8	5	9
Biomedical Sciences	0	0	0	0	3
Chemistry	1	0	1	6	6
Computer Sciences	0	0	0	1	0
Criminal Justice / Law Enforce.	3	12	2	13	11
English	8	4	7	0	3
Geography / Earth Science	0	1	4	4	2
Health / Physical Education	0	3	4	7	3
History	4	3	7	4	7
Family / Consumer/ Human Sci	10	8	4	4	6
Mathematics	7	0	1	6	3
Public Administration	21	28	38	66	51
Psychology	2	5	6	13	6
Park & Recreation Adm.	2	0	2	2	2
Sociology	1	4	7	1	2
Business Administration	28	18	17	26	23
Education & Special Edu.	109	94	134	134	129
Library & Information Sci.	112	97	106	98	107
Law	126	119	123	141	191
<b>Total</b>	<b>438</b>	<b>401</b>	<b>471</b>	<b>531</b>	<b>564</b>

## Degrees Awarded by College/School, Department and Program

College/ School	Department	Program	2004- 05	2005- 06	2006- 07	2007- 08	2008- 09
College of Liberal Arts	Art	Art	17	21	7	11	7
		Art Education	2	0	4	1	2
	English	English	24	17	24	25	17
		English, Secondary Edu.	4	1	4	6	3
		Mass Communication	30	35	34	39	41
	History	History	31	39	32	42	24
		History Teacher Edu.	1	3	2	2	4
	M F Language	French	1	0	1	1	1
		Spanish	2	7	6	9	9
		Spanish Education	0	0	0	0	1
	Music	Music Performance-Jazz	5	0	4	4	2
		Music, Gen.	11	10	10	6	8
		Music Teacher Education	0	0	6	2	0
	Theatre	Theatre / Drama	8	2	6	8	8
		Theatre Arts / Drama Education	1	0	0	3	0
<b>Sub-Total</b>			<b>137</b>	<b>135</b>	<b>140</b>	<b>159</b>	<b>127</b>
College of Beh. & Soc.	Criminal Justice	Criminal Justice	83	61	84	81	97
		Law Enforcement	3	12	2	13	11
	Human Sci.	Early Childhood B-K Licensure	10	2	9	2	9
		Family & Consumer Sci./ Hum.	62	60	70	73	56
		Home Econ Teacher Edu.	0	0	0	0	0
	Health Edu.	Public/Community Health Edu.	7	10	14	33	27
		Health /Physical Edu. Gen.	15	11	12	24	29
	Physical Edu.	Athletic Training	2	4	4	7	1
		Physical Education / Coaching	19	2	4	5	3
		Parks & Recreation Admin.	16	22	10	19	14
	Political Sci.	Political Science & Government	62	48	55	57	58
	Psychology	Psychology	59	56	57	74	45
	Public Admin.	Public Administration	21	28	38	66	51
	Social Work	Social Work	30	33	18	35	24
	Sociology	Sociology	24	20	30	19	17
<b>Sub-Total</b>			<b>413</b>	<b>369</b>	<b>407</b>	<b>508</b>	<b>442</b>

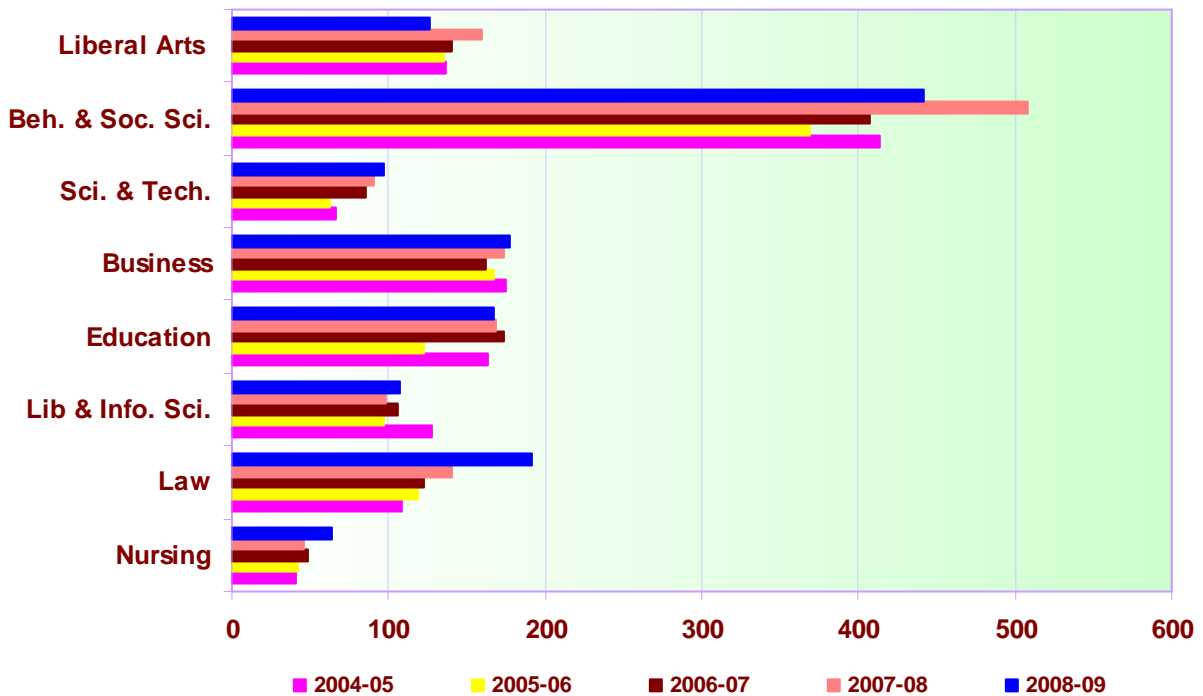
**Degrees Awarded by College/School, Department and Program**  
(Continued)

College/ School	Department	Program	2004- 05	2005- 06	2006- 07	2007- 08	2008- 09	
College of Sci. & Tech.	Biology	Biology	32	39	43	42	50	
		Biology, Secondary Edu.	0	0	0	0	0	
		Biomedical Sciences	0	0	0	0	5	
	Chemistry	Chemistry	7	2	6	14	14	
		Chemistry, Secondary Edu.	1	0	0	0	0	
	Math & Com. Sci.	Computer Sciences	11	8	7	12	3	
		Mathematics	10	7	7	3	10	
		Math Teacher Education	1	1	4	2	0	
	Env. Earth & Geo.	Environmental Sci.	3	2	6	8	7	
		Geography	1	2	6	5	4	
		Earth Sciences	0	1	4	0	2	
Physics	Physics	1	0	2	4	2		
<b>Sub-Total</b>			<b>67</b>	<b>62</b>	<b>85</b>	<b>90</b>	<b>97</b>	
Nursing	Nursing	Nursing	41	42	48	46	64	
<b>Sub-Total</b>			<b>41</b>	<b>42</b>	<b>48</b>	<b>46</b>	<b>64</b>	
School of Business	Business Adm.	Accounting	26	24	13	14	13	
		Business Mgmt. / Info. System	140	135	134	147	138	
		Hospitality & Tourism Adm.	9	8	15	13	27	
<b>Sub-Total</b>			<b>216</b>	<b>209</b>	<b>210</b>	<b>220</b>	<b>178</b>	
School of Education	Comm. Disorder	Communication Disorder	16	21	32	31	34	
		Counselor Edu.	19	0	0	0	0	
			College Student Counseling	1	8	18	22	19
			Counselor Edu./Schl Counseling	25	26	14	19	10
	Curriculum/Instr.	Elementary Education, (K-6)	43	27	40	34	33	
		Middle Grades Education, (6-9)	6	7	7	4	5	
		Curriculum Instruction & Edu.	0	1	0	12	20	
	Edu. Leadership	School Administration	18	13	27	14	24	
	Edu. Technology	Educational Media/Technology	6	8	11	13	5	
	Special Edu.	Spe. Edu. Blind/Visually Handica	4	0	2	0	1	
		Spe. Edu. Emotionally Handicap	3	1	1	0	0	
		Spe. Edu. Mentally Handicap.	4	2	3	2	0	
		Spe. Edu. Learning Disability	0	0	0	3	1	
		Special Education & Teaching	18	9	19	15	15	
<b>Sub-Total</b>			<b>163</b>	<b>123</b>	<b>174</b>	<b>169</b>	<b>167</b>	
School of Lib/Info. Sci.	Lib. & Info. Sci.	Library Sciences, General	75	70	72	82	83	
		Information Sciences	53	27	34	16	24	
<b>Sub-Total</b>			<b>128</b>	<b>97</b>	<b>106</b>	<b>98</b>	<b>107</b>	
School of Law	Law	Law	109	119	123	141	191	
<b>Total</b>			<b>1233</b>	<b>1114</b>	<b>1245</b>	<b>1385</b>	<b>1373</b>	

## Degrees Awarded by College/School

College/School	2004- 05	2005- 06	2006- 07	2007- 08	2008- 09
College of Liberal Arts	137	135	140	159	127
College of Beh. & Soc. Sci.	413	369	407	508	442
College of Sci. & Tech.	67	62	85	90	97
School of Business	175	167	162	174	178
School of Education	163	123	174	169	167
School of Lib & Info. Sci.	128	97	106	98	107
School of Law	109	119	123	141	191
Nursing	41	42	48	46	64
<b>Total Degrees Awarded</b>	<b>1233</b>	<b>1114</b>	<b>1245</b>	<b>1385</b>	<b>1373</b>

## Degrees Awarded by College/School



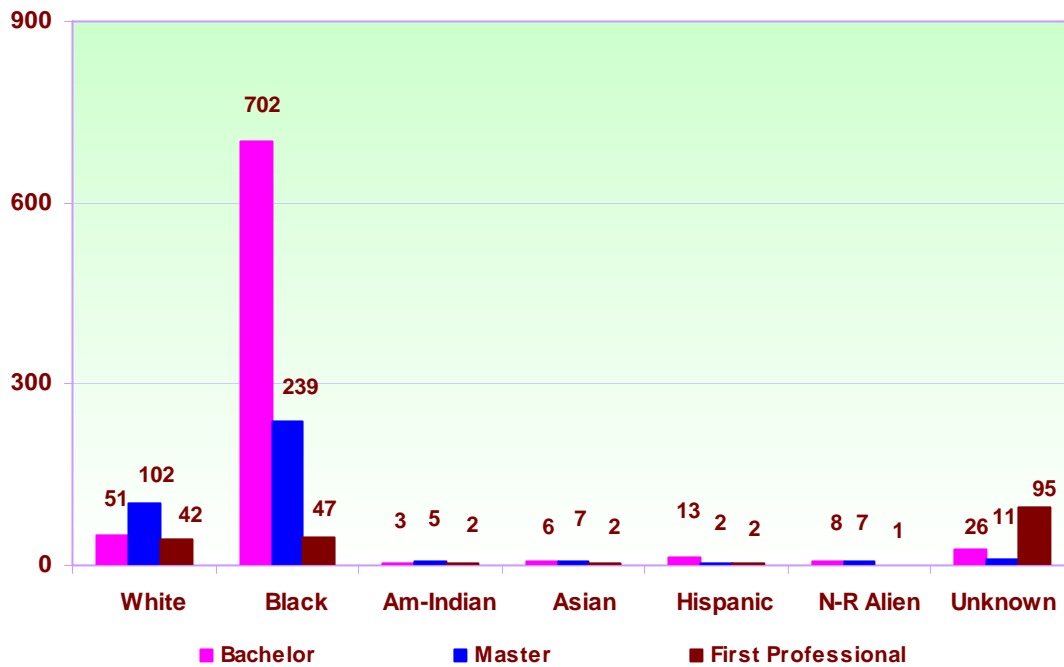
## Degrees Awarded by Level and Ethnicity

2008 - 2009 Fiscal Year

Ethnicity	Bachelor		Master		First Professional		Total	
	No.	%	No.	%	No.	%	No.	%
Black	702	51.13%	239	17.41%	47	3.42%	988	71.96%
White	51	3.71%	102	7.43%	42	3.06%	195	14.20%
American Indian	3	0.22%	5	0.36%	2	0.15%	10	0.73%
Asian	6	0.44%	7	0.51%	2	0.15%	15	1.09%
Hispanic	13	0.95%	2	0.15%	2	0.15%	17	1.24%
Other/Unknown	26	1.89%	11	0.80%	95	6.92%	132	9.61%
Non-Resident Alien	8	0.58%	7	0.51%	1	0.07%	16	1.17%
<b>Total</b>	<b>809</b>	<b>58.92%</b>	<b>373</b>	<b>27.17%</b>	<b>191</b>	<b>13.91%</b>	<b>1373</b>	<b>100%</b>

## Degrees Awarded by Level and Ethnicity

2008 - 2009 Fiscal Year



## Undergraduate Degrees Awarded by Program, Ethnicity, and Gender 2008 - 2009 Fiscal Year

Program	Black		White		Others		NR Alien		Total	
	M	F	M	F	M	F	M	F	M	F
Accounting	1	5	1	0	4	1	1	0	7	6
Art	5	1	0	0	1	0	0	0	6	1
Art Teacher Education	0	1	1	0	0	0	0	0	1	1
Athletic Training	0	0	0	0	0	1	0	0	0	1
Biology	12	27	0	1	0	1	0	0	12	29
Biomedical Sciences	0	1	0	1	0	0	0	0	0	2
Business Admin. & Mgmt.	44	43	5	0	1	3	2	0	52	46
Chemistry	2	6	0	0	0	0	0	0	2	6
Chemistry, Education	0	0	0	0	0	0	0	0	0	0
Computer Sciences	3	0	0	0	0	0	0	0	3	0
Community/ Public Health Edu.	0	0	0	0	0	0	0	0	0	0
Criminal Justice	30	58	1	4	1	3	0	0	32	65
Early Childhood Ed B-K Licensure	0	0	0	0	0	0	0	0	0	0
Elementary Education (K-6)	2	21	1	6	0	3	0	0	3	30
English Language	4	8	0	0	0	2	0	0	4	10
English, Education & Teaching	0	3	0	0	0	0	0	0	0	3
Environmental Sciences (New)	4	3	0	0	0	0	0	0	4	3
Family & Consumer / Human Sci.	3	42	1	1	0	3	0	0	4	46
Family & Consumer Sci. Edu.	0	0	0	0	0	0	0	0	0	0
French Language	0	1	0	0	0	0	0	0	0	1
Geography	2	1	1	0	0	0	0	0	3	1
Health & Physical Education	12	12	0	2	0	0	0	0	12	14
History	6	9	2	0	0	0	0	0	8	9
History, Teacher Education	3	1	0	0	0	0	0	0	3	1
Hospitality & Tourism Adm.	10	16	0	1	0	0	0	0	10	17
Information Sciences	10	4	1	0	2	0	0	0	13	4
Jazz	2	0	0	0	0	0	0	0	2	0
Kindergarten / Pre-School	0	6	0	2	0	1	0	0	0	9
Mass Communication	18	22	0	0	0	0	0	1	18	23
Mathematics	2	4	0	1	0	0	0	0	2	5
Mathematics, Teacher Education	0	0	0	0	0	0	0	0	0	0
Middle Grades Education (6-9)	1	3	0	1	0	0	0	0	1	4
Music	7	1	0	0	0	0	0	0	7	1
Music Performance-Jazz	0	0	0	0	0	0	0	0	0	0
Nursing	4	40	4	9	1	3	1	2	10	54
Physical Edu. Teaching / Coaching	0	1	0	0	2	0	0	0	2	1
Public Health Edu. & Promotion	4	21	0	0	1	1	0	0	5	22
Physics	1	1	0	0	0	0	0	0	1	1
Political Sciences	15	37	0	0	5	1	0	0	20	38
Psychology	7	31	0	0	0	1	0	0	7	32
Park, Recreation Administration	9	3	0	0	0	0	0	0	9	3
Social work	3	18	0	2	0	0	1	0	4	20
Sociology	2	12	0	0	1	0	0	0	3	12
Spanish Language Teacher Edu.	0	1	0	0	0	0	0	0	0	1
Spanish Language	1	3	0	2	1	2	0	0	2	7
Drama & Theatre Art	3	3	0	0	0	0	0	0	3	3
Theatre Art Education, K-12	0	0	0	0	1	1	0	0	1	1
Sub-Total	232	470	18	33	21	27	5	3	276	533
<b>Total</b>	<b>702</b>		<b>51</b>		<b>48</b>		<b>8</b>		<b>809</b>	

## Graduate Degrees Awarded by Academic Program, Ethnicity, and Gender 2008 - 2009 Academic Year

Programs	Black		White		Others		NR Alien		Total	
	M	F	M	F	M	F	M	F	M	F
Biology / Biological Sciences	1	6	0	0	1	1	0	0	2	7
Biomedical Sciences	0	0	0	0	1	0	0	2	1	2
Chemistry, General	2	4	0	0	0	0	0	0	2	4
Criminal Justice / Law Enforce.	5	4	0	1	1	0	0	0	6	5
Geology / Earth Sciences	1	0	0	0	0	0	0	1	1	1
Computer Sciences	0	0	0	0	0	0	0	0	0	0
Family & Consumer / Human Sci.	0	6	0	0	0	0	0	0	0	6
History, General	1	5	1	0	0	0	0	0	2	5
English Language / Literature	0	1	2	0	0	0	0	0	2	1
Mathematics, General	1	0	1	0	0	0	1	0	3	0
Physical Education	0	0	0	0	0	0	0	0	0	0
Psychology, General	1	4	0	1	0	0	0	0	1	5
Public Administration	10	38	0	0	0	3	0	0	10	41
Park, Recreation & Facility	0	2	0	0	0	0	0	0	0	2
Sociology	0	1	0	1	0	0	0	0	0	2
Curriculum Education	0	9	1	9	1	0	0	0	2	18
Secondary School Admin.	3	17	1	3	0	0	0	0	4	20
Counselor Edu. & Counseling	3	3	1	2	0	1	0	0	4	6
College Student Counseling	2	10	2	5	0	0	0	0	4	15
Elementary Edu. & Teaching	0	0	0	0	0	0	0	0	0	0
Jr. High / Middle School Edu.	0	0	0	0	0	0	0	0	0	0
English / Language Arts Edu.	0	0	0	0	0	0	0	0	0	0
Family Sci. & Home Econ.	0	0	0	0	0	0	0	0	0	0
Math Education & Teaching	0	0	0	0	0	0	0	0	0	0
Physical Edu. & Coaching	0	0	0	0	0	0	0	0	0	0
Biology Teacher Education	0	0	0	0	0	0	0	0	0	0
Chemistry Teacher Education	0	0	0	0	0	0	0	0	0	0
History Teacher Education	0	0	0	0	0	0	0	0	0	0
Health and Physical Education	2	1	0	0	0	0	0	0	2	1
Communication Disorder,	0	13	1	14	1	5	0	0	2	32
Educational Media Design	1	3	1	0	0	0	0	0	2	3
Special Edu. Blind & Visually	0	0	0	1	0	0	0	0	0	1
Special Edu. Learning Disability	0	0	0	1	0	0	0	0	0	1
Special Edu. Emotionally	0	0	0	0	0	0	0	0	0	0
Special Edu. Mentally	0	0	0	0	0	0	0	0	0	0
Special Education & Teaching	2	7	0	6	0	0	0	0	2	13
Business Administration & Mgt	8	12	2	0	0	0	0	1	10	13
Information Sciences	9	11	0	0	1	1	1	1	11	13
Library Science / Librarianship	6	24	10	35	1	7	0	0	17	66
Law	14	33	21	21	38	63	0	1	73	118
Sub-Total	72	214	44	100	45	81	2	6	163	401
<b>Total</b>	<b>286</b>	<b>144</b>	<b>126</b>	<b>8</b>	<b>564</b>					



**A Comparison of the Retention Rates of Full-Time First-Time Degree Seeking  
Freshmen Enrolled in NCCU,  
Predominately Black Institutions (PBI), and the UNC System**

**Fall 2009**

	<b>2003</b>	<b>2004</b>	<b>2005</b>	<b>2006</b>	<b>2007</b>	<b>2008</b>
<b>AFTER ONE YEAR</b>						
NCCU	<b>77.8%</b>	<b>75.9%</b>	<b>70.9%</b>	<b>76.9%</b>	<b>71.6%</b>	<b>77.0%</b>
PBI	74.9%	74.3%	73.5%	73.1%	72.7%	76.8%
UNC SYSTEM	81.7%	81.2%	75.1%	79.3%	81.3%	82.7%
<b>AFTER TWO YEARS</b>						
NCCU	<b>66.4%</b>	<b>61.5%</b>	<b>57.2%</b>	<b>62.3%</b>	<b>57.1%</b>	
PBI	62.3%	64.1%	59.1%	60.8%	59.3%	
UNC SYSTEM	71.7%	66.1%	62.8%	71.3%	72.2%	
<b>AFTER THREE YEARS</b>						
NCCU	<b>58.0%</b>	<b>53.3%</b>	<b>49.0%</b>	<b>56.4%</b>		
PBI	58.9%	53.0%	52.1%	54.6%		
UNC SYSTEM	58.0%	58.3%	66.6%	66.6%		
<b>AFTER FOUR YEARS</b>						
NCCU	<b>34.8%</b>	<b>30.49%</b>	<b>29.8%</b>			
PBI	32.1%	32.3%	32.6%			
UNC SYSTEM	38.0%	28.7%	28.4%			
<b>AFTER FIVE YEARS</b>						
NCCU	<b>12.5%</b>	<b>12.7%</b>				
PBI	12.0%	12.8%				
UNC SYSTEM	8.0%	8.1%				
<b>AFTER SIX YEARS</b>						
NCCU	<b>4.5%</b>					
PBI	5.0%					
UNC SYSTEM	3.2%					

Note: Retention, Graduation, and Persistence Rates for 2008 are from UNC-GA office.

**A Comparison of the Graduation Rates of Full-Time First-Time Degree Seeking  
Freshman Enrolled at NCCU,  
Predominately Black Institutions (PBI), and the UNC System**

**Fall 2009**

<b>Cohort Year</b>	<b>Institution</b>	<b>No. in Class</b>	<b>After 4 Years</b>	<b>After 5 Years</b>	<b>After 6 Years</b>	<b>After 7 Years</b>
<b>2002</b>	<b>NCCU</b>	<b>821</b>	<b>23.3%</b>	<b>41.0%</b>	<b>47.9%</b>	<b>51.0%</b>
	PBI		18.5%	33.9%	44.8%	42.4%
	UNC SYTEM		23.5%	42.5%	58.8%	60.4%
<b>2003</b>	<b>NCCU</b>	<b>1025</b>	<b>18.5%</b>	<b>37.6%</b>	<b>44.4%</b>	
	PBI		16.7%	40.3%	38.3%	
	UNC SYTEM		19.3%	54.2%	58.8%	
<b>2004</b>	<b>NCCU</b>	<b>1138</b>	<b>18.3%</b>	<b>31.8%</b>		
	PBI		32.7%	31.3%		
	UNC SYTEM		54.2%	54.2%		
<b>2005</b>	<b>NCCU</b>	<b>1195</b>	<b>15.1%</b>			
	PBI		15.2%			
	UNC SYTEM		35.2%			
<b>2006</b>	<b>NCCU</b>	<b>978</b>	<b>0.6%</b>			
	PBI		0.4%			
	UNC SYTEM		0.9%			
<b>2007</b>	<b>NCCU</b>	<b>1236</b>	<b>0.0%</b>			
	PBI		0.1%			
	UNC SYTEM		0.0%			
<b>2008</b>	<b>NCCU</b>	<b>1026</b>	<b>0.0%</b>			
	PBI		0.0%			
	UNC SYTEM		0.0%			

Note: Retention, Graduation, and Persistence Rates 2008 are from UNC-GA office.

**A Comparison of the Persistence Rates of Full-Time First-Time Degree Seeking  
Freshmen Enrolled at NCCU,  
Predominately Black Institutions (PBI), and the UNC System**

**Fall 2009**

	<b>2003</b>	<b>2004</b>	<b>2005</b>	<b>2006</b>	<b>2007</b>	<b>2008</b>
<b>AFTER ONE YEAR</b>						
<b>NCCU</b>	<b>77.8%</b>	<b>75.9%</b>	<b>70.9%</b>	<b>76.9%</b>	<b>71.6%</b>	<b>77.0%</b>
PBI	74.9%	74.3%	73.5%	73.3%	72.8%	76.8%
UNC SYSTEM	81.7%	81.2%	75.1%	79.3%	81.4%	82.7%
<b>AFTER TWO YEARS</b>						
<b>NCCU</b>	<b>66.4%</b>	<b>61.5%</b>	<b>57.2%</b>	<b>62.3%</b>	<b>57.1%</b>	
PBI	62.3%	64.1%	59.1%	60.9%	59.4%	
UNC SYSTEM	71.7%	66.1%	62.8%	71.3%	72.2%	
<b>AFTER THREE YEARS</b>						
<b>NCCU</b>	<b>58.5%</b>	<b>54.0%</b>	<b>49.5%</b>	<b>57.1%</b>		
PBI	59.2%	53.3%	52.3%	54.9%		
UNC SYSTEM	63.2%	59.2%	66.9%	67.5%		
<b>AFTER FOUR YEARS</b>						
<b>NCCU</b>	<b>53.4%</b>	<b>48.7%</b>	<b>44.9%</b>			
PBI	48.9%	47.6%	47.8%			
UNC SYSTEM	57.4%	63.7%	63.6%			
<b>AFTER FIVE YEARS</b>						
<b>NCCU</b>	<b>50.1%</b>	<b>44.6%</b>				
PBI	44.6%	44.1%				
UNC SYSTEM	62.2%	62.3%				
<b>AFTER SIX YEARS</b>						
<b>NCCU</b>	<b>48.9%</b>					
PBI	43.3%					
UNC SYSTEM	62.0%					

Note: Retention, Graduation, and Persistence Rates 2008 are from UNC-GA office.

## Section 5

# *Student Financial Aid*

Office of Research, Evaluation and Planning

## Summary of Student Financial Aid by Type and Recipient 2008- 2009 Academic Year

Undergraduate Student	Financial Aid Type	Recipient	Amount
<b>Section I. Grants and Scholarships</b>	<b>Total Sect. I Grants &amp; Scholarships</b>	<b>4,831</b>	<b>\$34,170,022</b>
	F9 Other federal scholarship or grant	41	\$68,255
	FA Federal Pell Grant	3,551	\$12,637,747
	FB Federal Supplemental Educational Opp	824	\$911,019
	FN Federal Veteran Educational Benefits	161	\$1,144,691
	FR Academic Competitiveness Grant Train	598	\$464,325
	FS Smart Grant	44	\$154,985
	FT DC Tuition Assistance Grant (TAG)	65	\$565,664
	IA Athletic Grant-In-Aid	176	\$1,229,004
	IB Institutional grant/scholarship (nee	112	\$222,504
	IC Institutional grant/scholarship (non	568	\$2,190,484
	IF Need Based Campus Initiated Tuition	2,607	\$2,790,672
	OA Externally Administered Private Gran	512	\$827,107
	S1 EARN-Ed. Access Rewards NC	463	\$1,740,299
	S9 Other North Carolina scholarship or	2	\$3,000
	SA NC Student Incentive Grant (NCSIG-In	455	\$298,550
	SB UNC Campus Scholarship Program	110	\$470,527
	SC NCSSM Tuition Grant for UNC	8	\$17,744
	SD Teaching Assistant Scholarship Fund	19	\$53,345
	SH Education Lottery Scholarship	656	\$786,743
	SK NC Division of Vocational Rehabilita	26	\$134,303
	ST UNC Need Based Grant	3,194	\$6,751,697
	SV Appropriated grant (Non-service scho	770	\$706,324
	SW Graduate Assistant Tuition Award Ben	1	\$1,033
<b>Section II. Scholarship/Loans</b>	<b>Total Sect. II Scholarship/Loans</b>	<b>65</b>	<b>\$273,023</b>
	SL NC Scholarships for Health, Science,	2	\$5,000
	SM NC Teaching Fellows Program (forgiva	26	\$170,523
	SO Nurse Education Scholarship/Loan Pro	24	\$46,000
	SP Nurse Scholars Program (forgivable I	6	\$30,000
	SR Prospective Teacher Scholarship Loan	7	\$21,500
<b>Section III. Loans</b>	<b>Total Sect. III Loans</b>	<b>5,006</b>	<b>\$39,732,003</b>
	FD Federal Perkins Loan	201	\$362,387
	FE Federal Family Education Loan Progra	3	\$12,500
	FF FFELP-Unsubsidized Stafford	2	\$5,500
	FG FFELP-PLUS	4	\$15,934
	FI Federal Ford Direct Loan Program (FD	4,370	\$16,441,915
	FJ FDLP-Unsubsidized Stafford	3,945	\$16,434,931
	FK FDLP-PLUS	837	\$6,432,611
	FL FDLP-Grad PLUS	1	\$3,513
	OB Alternative Loan	1	\$22,712
<b>Section IV. Employment</b>	<b>Total Sect. IV Employment</b>	<b>681</b>	<b>\$466,794</b>
	FC Federal Work Study (FWS)	681	\$466,794
<b>Section V. Total All Categories (Sect. I-IV)</b>	<b>Total Sect. V All Categories (Sect. I-IV)</b>	<b>5,695</b>	<b>\$74,641,842</b>
<b>Section VI. Other Aid</b>	<b>Total Sect. VI Other Programs</b>	<b>84</b>	<b>\$86,996</b>

<b>Graduate Student</b>	<b>Financial Aid Type</b>	<b>Recipient</b>	<b>Amount</b>
<b>Section I. Grants and Scholarships</b>	<b>Total Sect. I Grants &amp; Scholarships</b>	<b>372</b>	<b>\$1,705,153</b>
	FN Federal Veteran Educational Benefits	21	\$118,849
	IA Athletic Grant-In-Aid	3	\$35,500
	IB Institutional grant/scholarship (nee	1	\$3,938
	IC Institutional grant/scholarship (non	142	\$746,504
	IG Non-Need Based Campus Initiated Tuit	28	\$54,918
	OA Externally Administered Private Gran	95	\$195,627
	SD Teaching Assistant Scholarship Fund	2	\$3,600
	SK NC Division of Vocational Rehabilita	2	\$8,604
	SW Graduate Assistant Tuition Award Ben	116	\$537,613
<b>Section II. Scholarship/Loans</b>	<b>Total Sect. II Scholarship/Loans</b>	<b>6</b>	<b>\$79,536</b>
	SL NC Scholarships for Health, Science,	4	\$22,750
	SQ Principal Fellows Program (forgivabl	2	\$56,786
<b>Section III. Loans</b>	<b>Total Sect. III Loans</b>	<b>975</b>	<b>\$16,039,679</b>
	FD Federal Perkins Loan	12	\$18,173
	FE Federal Family Education Loan Progra	1	\$8,500
	FF FFELP-Unsubsidized Stafford	1	\$10,500
	FI Federal Ford Direct Loan Program (FD	919	\$6,463,248
	FJ FDLP-Unsubsidized Stafford	818	\$7,970,694
	FL FDLP-Grad PLUS	246	\$1,568,564
<b>Section IV. Employment</b>	<b>Total Sect. IV Employment</b>	<b>22</b>	<b>\$30,108</b>
	FC Federal Work Study (FWS)	22	\$30,108
<b>Section V. Total All Categories (Sect. I-IV)</b>	<b>Total Sect. V All Categories (Sect. I-IV)</b>	<b>1,140</b>	<b>\$17,854,476</b>
<b>First Professional Student</b>	<b>Financial Aid Type</b>	<b>Recipient</b>	<b>Amount</b>
<b>Section I. Grants and Scholarships</b>	<b>Total Sect. I Grants &amp; Scholarships</b>	<b>335</b>	<b>\$1,834,207</b>
	FN Federal Veteran Educational Benefits	20	\$164,947
	IC Institutional grant/scholarship (non	180	\$675,946
	IF Need Based Campus Initiated Tuition	111	\$628,500
	IG Non-Need Based Campus Initiated Tuit	9	\$18,000
	OA Externally Administered Private Gran	25	\$69,311
	SK NC Division of Vocational Rehabilita	3	\$19,278
	SV Appropriated grant (Non-service scho	33	\$84,000
	SW Graduate Assistant Tuition Award Ben	71	\$174,225
<b>Section III. Loans</b>	<b>Total Sect. III Loans</b>	<b>536</b>	<b>\$12,660,613</b>
	FD Federal Perkins Loan	3	\$5,700
	FE Federal Family Education Loan Progra	2	\$17,000
	FF FFELP-Unsubsidized Stafford	3	\$42,638
	FI Federal Ford Direct Loan Program (FD	504	\$4,081,367
	FJ FDLP-Unsubsidized Stafford	491	\$5,608,864
	FL FDLP-Grad PLUS	290	\$2,489,143
	OB Alternative Loan	35	\$415,901
<b>Section IV. Employment</b>	<b>Total Sect. IV Employment</b>	<b>9</b>	<b>\$15,891</b>
	FC Federal Work Study (FWS)	9	\$15,891
<b>Section V. Total All Categories (Sect. I-IV)</b>	<b>Total Sect. V All Categories (Sect. I-IV)</b>	<b>558</b>	<b>\$14,510,711</b>

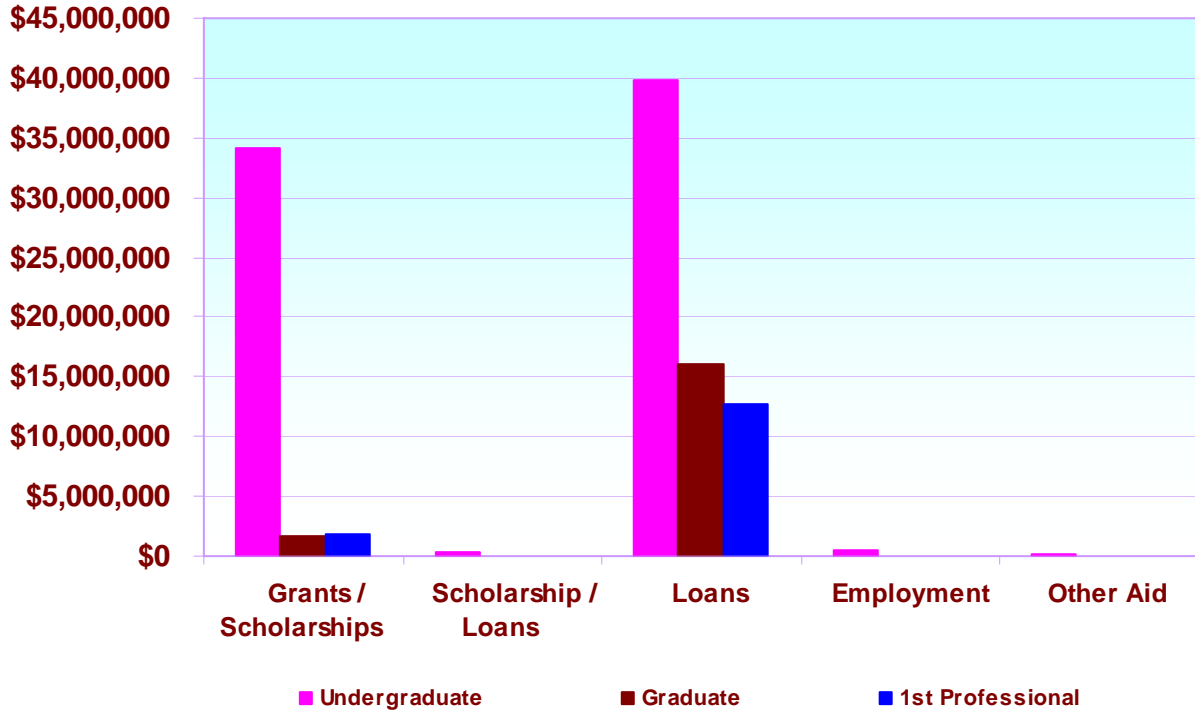
## Summary of Student Financial Aid by Type and Level

2008- 2009 Academic Year

Financial Aid Type	Undergraduate	Graduate	1st Professional
Grants and Scholarships	\$34,170,022	\$1,705,153	\$1,834,207
Scholarship/Loans	\$273,023	\$79,536	0
Loans	\$39,732,003	\$16,039,679	\$12,660,613
Employment	\$466,794	\$30,108	\$15,891
Other Aid	\$86,996	0	0
<b>Total Amount</b>	<b>\$74,728,838</b>	<b>\$17,854,476</b>	<b>\$14,510,711</b>

## Summary of Student Financial Aid by Type and Level

2008- 2009 Academic Year



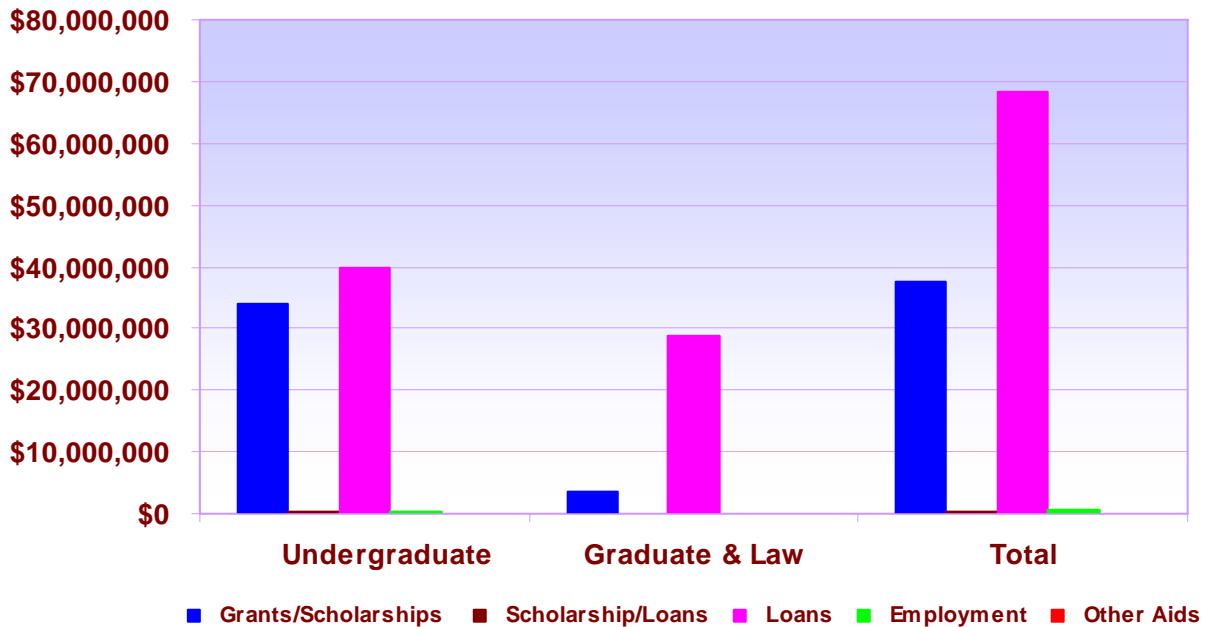
## Summary of Student Financial Aid by Level and Percentage

2008 - 2009 Academic Year

Aid Type	2008- 2009	Percent
<b>Grants &amp; Scholarships</b>		
Undergraduate	\$34,170,022	31.91%
Graduate and Law	\$3,539,360	3.30%
<b>Subtotal</b>	<b>\$37,709,382</b>	<b>35.21%</b>
<b>Scholarship / Loans</b>		
Undergraduate	\$273,023	0.25%
Graduate and Law	\$79,536	0.07%
<b>Subtotal</b>	<b>\$352,559</b>	<b>0.33%</b>
<b>Loans</b>		
Undergraduate	\$39,732,003	37.10%
Graduate and Law	\$28,700,292	26.80%
<b>Subtotal</b>	<b>\$68,432,295</b>	<b>63.90%</b>
<b>Employment</b>		
Undergraduate	\$466,794	0.44%
Graduate and Law	\$45,999	0.04%
<b>Subtotal</b>	<b>\$512,793</b>	<b>0.48%</b>
<b>Other Aid</b>		
Undergraduate	\$86,996	0.08%
<b>TOTAL AID AWARDED</b>	<b>\$107,094,025</b>	<b>100%</b>

## Summary of Student Financial Aid by Level and Type

2008 - 2009 Academic Year



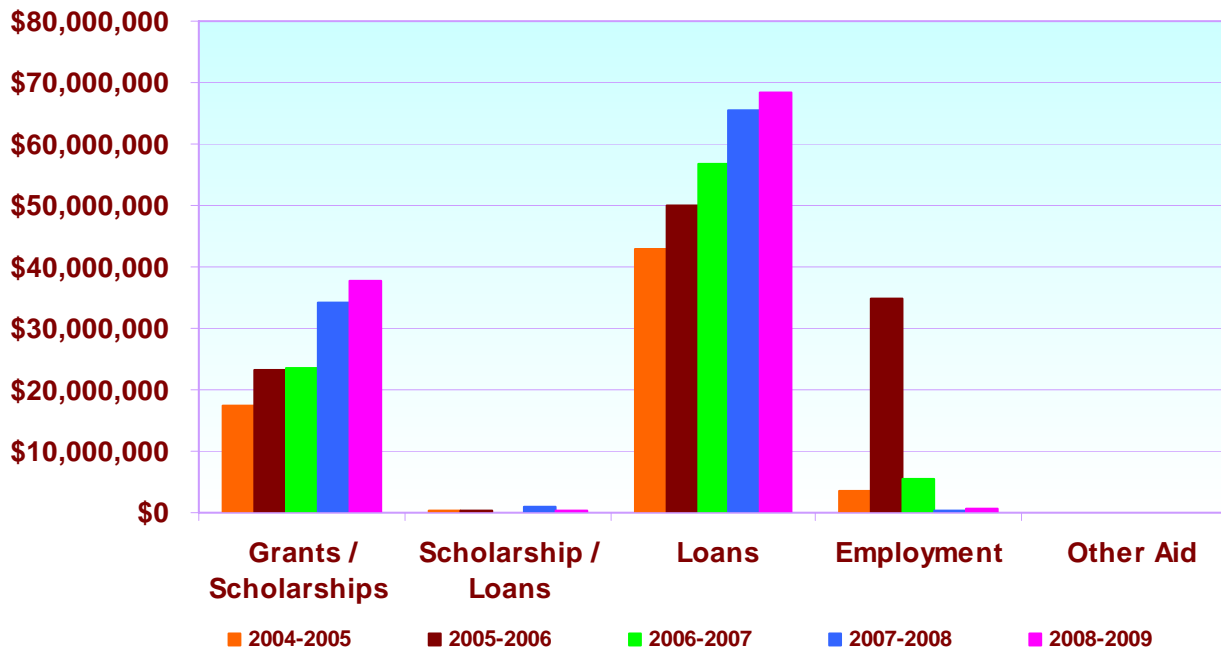


## Summary of Student Financial Aid by Type, Level and Academic Years

Aid Type	2004-2005	2005-2006	2006-2007	2007-2008	2008-2009
<b>Grants / Scholarships</b>					
Undergraduate	\$21,689,947	\$19,608,706	\$21,492,810	\$31,530,454	\$34,170,022
Graduate and Law	\$1,404,443	\$1,458,185	\$1,980,563	\$2,740,835	\$3,539,360
<b>Subtotal</b>	<b>\$23,094,390</b>	<b>\$21,066,891</b>	<b>\$23,473,373</b>	<b>\$34,271,289</b>	<b>\$37,709,382</b>
<b>Scholarship / Loans</b>					
Undergraduate	\$220,473	\$167,552	\$30,233	\$948,437	\$273,023
Graduate and Law	\$6,083	\$3,198	\$26,000	\$95,960	\$79,536
<b>Subtotal</b>	<b>\$226,556</b>	<b>\$170,750</b>	<b>\$56,233</b>	<b>\$1,044,397</b>	<b>\$352,559</b>
<b>Loans</b>					
Undergraduate	\$33,268,458	\$34,879,745	\$35,769,943	\$37,986,245	\$39,732,003
Graduate and Law	\$16,711,524	\$18,829,618	\$20,849,916	\$27,392,540	\$28,700,292
<b>Subtotal</b>	<b>\$49,979,982</b>	<b>\$53,709,363</b>	<b>\$56,619,859</b>	<b>\$65,378,785</b>	<b>\$68,432,295</b>
<b>Employment</b>					
Undergraduate	\$34,911,176	\$3,272,222	\$4,991,713	\$423,701	\$466,794
Graduate and Law	\$54,907	\$61,695.0	\$545,479	\$30,050	\$45,999
<b>Subtotal</b>	<b>\$34,966,083</b>	<b>\$3,333,917</b>	<b>\$5,537,192</b>	<b>\$453,751</b>	<b>\$512,793</b>
<b>Other Aid</b>					
Undergraduate	*	*	*	\$78,400	\$86,996
<b>Total Aid Awarded</b>	<b>\$108,267,011</b>	<b>\$78,280,921</b>	<b>\$85,686,657</b>	<b>\$101,226,622</b>	<b>\$107,094,025</b>

Note: before 2008 academic year, data of Other Aid is included in Scholarship /Loans type.

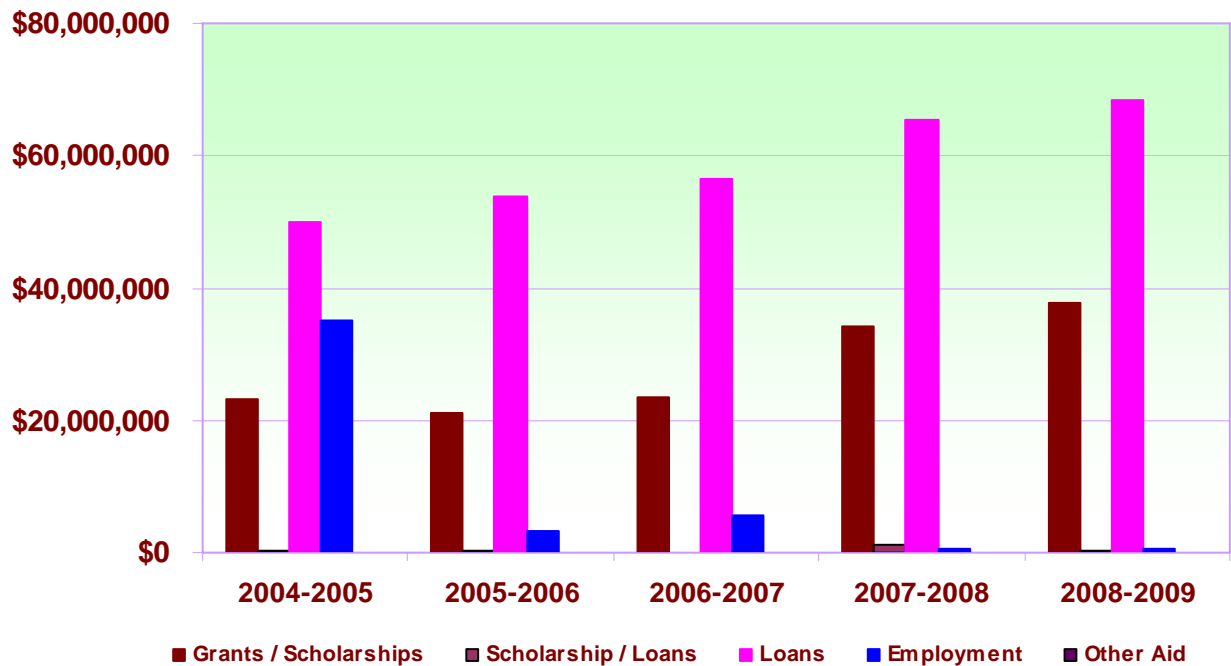
## Summary of Student Financial Aid by Type, Level and Academic Years



## Summary of Student Financial Aid by Type and Academic Years

Aid Type	2004-2005	2005-2006	2006-2007	2007-2008	2008-2009
Grants / Scholarships	\$23,094,390	\$21,066,891	\$23,473,373	\$34,271,289	\$37,709,382
Scholarship / Loans	\$226,556	\$170,750	\$56,233	\$1,044,397	\$352,559
Loans	\$49,979,982	\$53,709,363	\$56,619,859	\$65,378,785	\$68,432,295
Employment	\$34,966,083	\$3,333,917	\$5,537,192	\$453,751	\$512,793
Other Aid	*	*	*	\$78,400	\$86,996
<b>Total Aid Awarded</b>	<b>\$108,267,011</b>	<b>\$78,280,921</b>	<b>\$85,686,657</b>	<b>\$101,226,622</b>	<b>\$107,094,025</b>

## Summary of Student Financial Aid by Type and Academic Years



## Section 6

# *University Workforce (Faculty and Staff)*

Office of Research, Evaluation and Planning

## University Workforce by Employment Status and Gender

**Fall 2009**

<b>Full-Time Employees</b>			
	<b>Male</b>	<b>Female</b>	<b>Total</b>
Faculty (EPA)	204	205	409
Non-Faculty (EPA)	81	145	226
State Employees(SPA)	309	422	731
Graduate Student Assistants (GTA)	3	5	8
<b>Total Full-Time</b>	<b>597</b>	<b>777</b>	<b>1374</b>
<b>Part-Time Employees</b>			
	<b>Male</b>	<b>Female</b>	<b>Total</b>
Faculty	86	113	199
Non-Faculty	16	13	29
State Employees(SPA)	7	8	15
Graduate Student Assistants (GTA)	39	69	108
<b>Total Part-Time EPA</b>	<b>148</b>	<b>203</b>	<b>351</b>
<b>Total Employee:</b>			
	<b>Male</b>	<b>Female</b>	<b>Total</b>
All Faculty	290	318	608
All Non-Faculty	97	158	255
All SPA Employees	316	430	746
All Graduate Student Assistants	42	74	116
<b>Total Employees</b>	<b>745</b>	<b>980</b>	<b>1725</b>

Source: Personnel Data File, as of September 30, 2009

## University Workforce by Employment Status and Ethnicity

**Fall 2009**

<b>Full-Time:</b>	<b>Hispanic</b>	<b>Am-Ind.</b>	<b>Asian</b>	<b>Black</b>	<b>White</b>	<b>Other</b>	<b>Total</b>
Administrators			3	82	9		94
Instructional	1	5	39	239	114	11	409
Professional	2	4	15	254	35	3	313
Technical		1	11	107	23		142
Clerical	2	1	3	240	14		260
Skilled		2	1	56	4		63
Service		7		85	1		93
<b>Sub-Total</b>	<b>5</b>	<b>20</b>	<b>72</b>	<b>1063</b>	<b>200</b>	<b>14</b>	<b>1374</b>
<b>Part-Time:</b>	<b>Hispanic</b>	<b>Am-Ind.</b>	<b>Asian</b>	<b>Black</b>	<b>White</b>	<b>Other</b>	<b>Total</b>
Administrators				3			3
Instructional	1	2	10	116	67	3	199
Professional		1	2	36	7	4	50
Technical	1		7	68	11	4	91
Clerical				4			4
Skilled				1			1
Service				3			3
<b>Sub-Total</b>	<b>2</b>	<b>3</b>	<b>19</b>	<b>231</b>	<b>85</b>	<b>11</b>	<b>351</b>
<b>All Employees:</b>	<b>Hispanic</b>	<b>Am-Ind.</b>	<b>Asian</b>	<b>Black</b>	<b>White</b>	<b>Other</b>	<b>Total</b>
Administrators			3	85	9		97
Instructional	2	7	49	355	181	14	608
Professional	2	5	17	290	42	7	363
Technical	1	1	18	175	34	4	233
Clerical	2	1	3	244	14		264
Skilled		2	1	57	4		64
Service		7		88	1		96
<b>Total Employees</b>	<b>7</b>	<b>23</b>	<b>91</b>	<b>1294</b>	<b>285</b>	<b>25</b>	<b>1725</b>

Note: Includes Graduate Teaching Assistants.

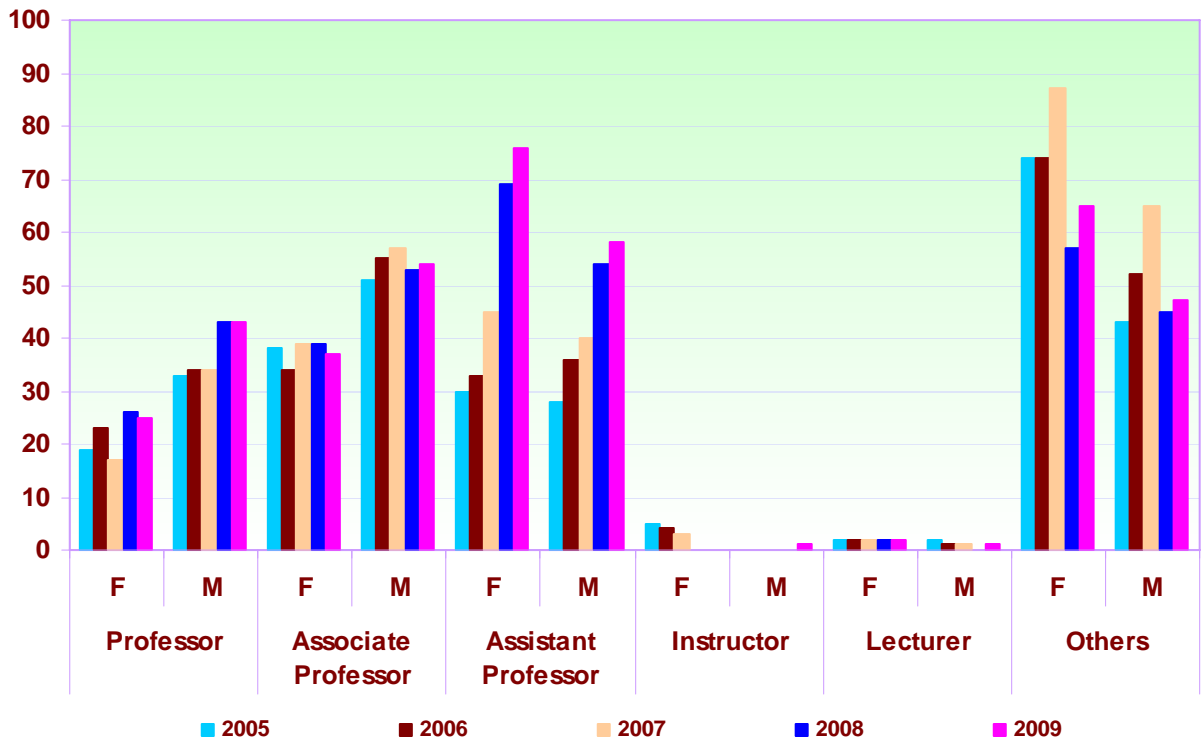
## Full-Time Faculty by Rank and Gender

Fall 2005 - 2009

	Professor		Associate Professor		Assistant Professor		Instructor		Lecturer		Others		Total	
	F	M	F	M	F	M	F	M	F	M	F	M	F	M
<b>2005</b>	19	33	38	51	30	28	5		2	2	74	43	168	157
<b>2006</b>	23	34	34	55	33	36	4		2	1	74	52	170	178
<b>2007</b>	17	34	39	57	45	40	3		2	1	87	65	193	197
<b>2008</b>	26	43	39	53	69	54			2		57	45	193	195
<b>2009</b>	25	43	37	54	76	58		1	2	1	65	47	205	204

## Full-Time Faculty by Rank and Gender

Fall 2005 – 2009



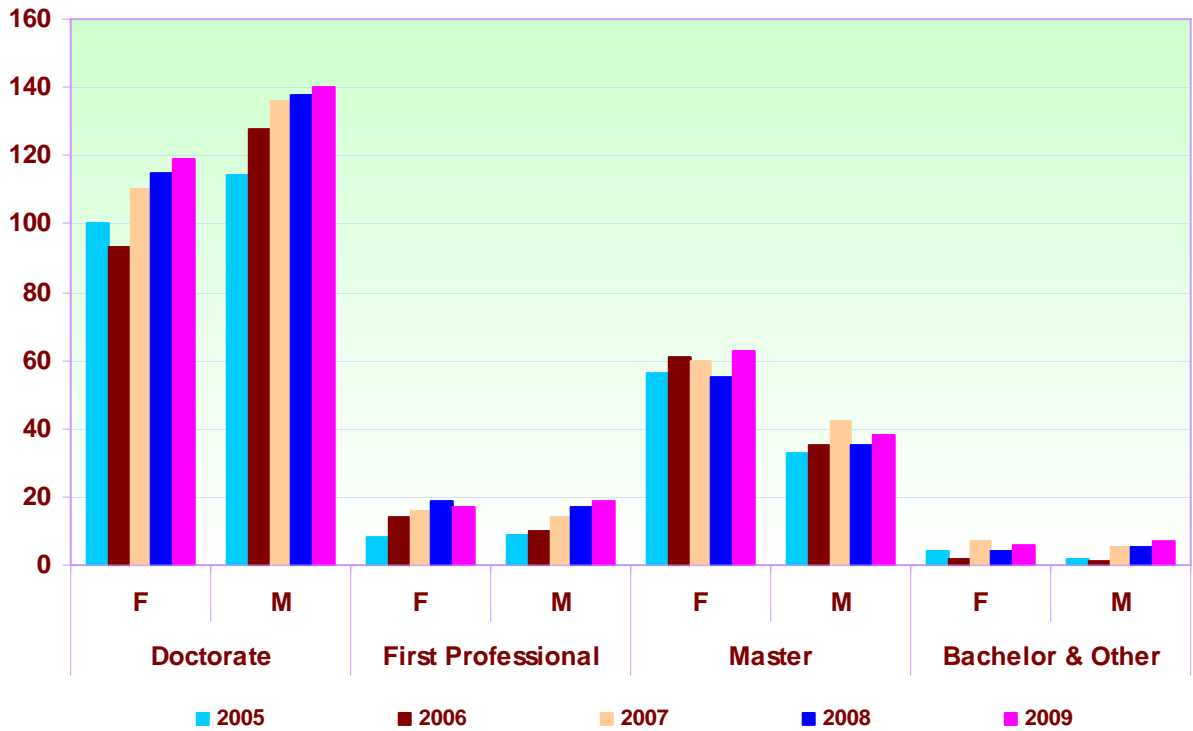
## Full-Time Faculty by Highest Earned Degree

Fall 2005 – 2009

	Doctorate		First Professional		Masters		Bachelors & Others		Total	
	F	M	F	M	F	M	F	M	F	M
	<b>2005</b>	100	114	8	9	56	33	4	1	168
<b>2006</b>	93	128	14	10	61	35	2	5	170	178
<b>2007</b>	110	136	16	14	60	42	7	5	193	197
<b>2008</b>	115	138	19	17	55	35	4	5	193	195
<b>2009</b>	119	140	17	19	63	38	6	7	205	204

## Full-Time Faculty by Highest Earned Degree

Fall 2005 – 2009



## Average Salary of Full-Time Faculty by Rank and Gender

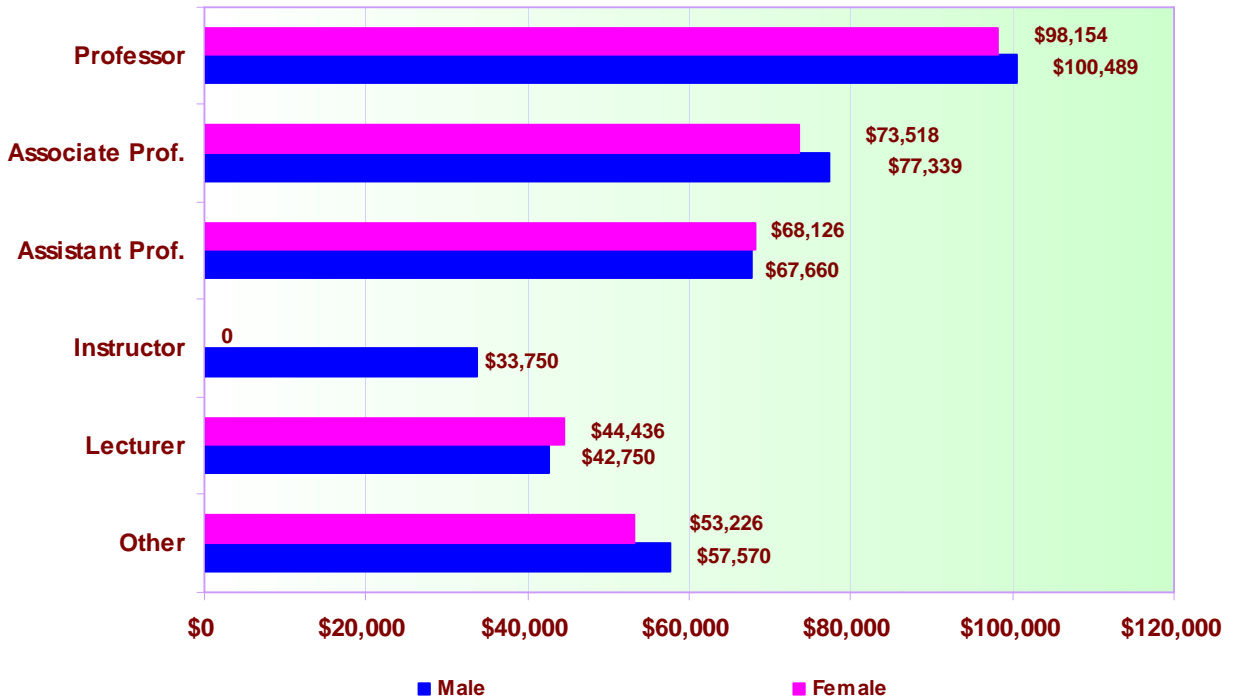
**Fall 2009**

Rank	Male (Mean)	Female (Mean)	Salary (Mean)
Professor	\$100,489	\$98,154	\$99,630
Associate Professor	\$77,339	\$73,518	\$75,785
Assistant Professor	\$67,660	\$68,126	\$67,924
Instructor	\$33,750		\$33,750
Lecturer	\$42,750	\$44,436	\$43,874
Other	\$57,570	\$53,226	\$55,049

Note: Salary data adjusted to nine-month salary scales for Full-Time faculty.

## Mean Salary of Full-Time Faculty by Rank and Gender

**Fall 2009**





## Average Salary Trend of Full-Time Faculty

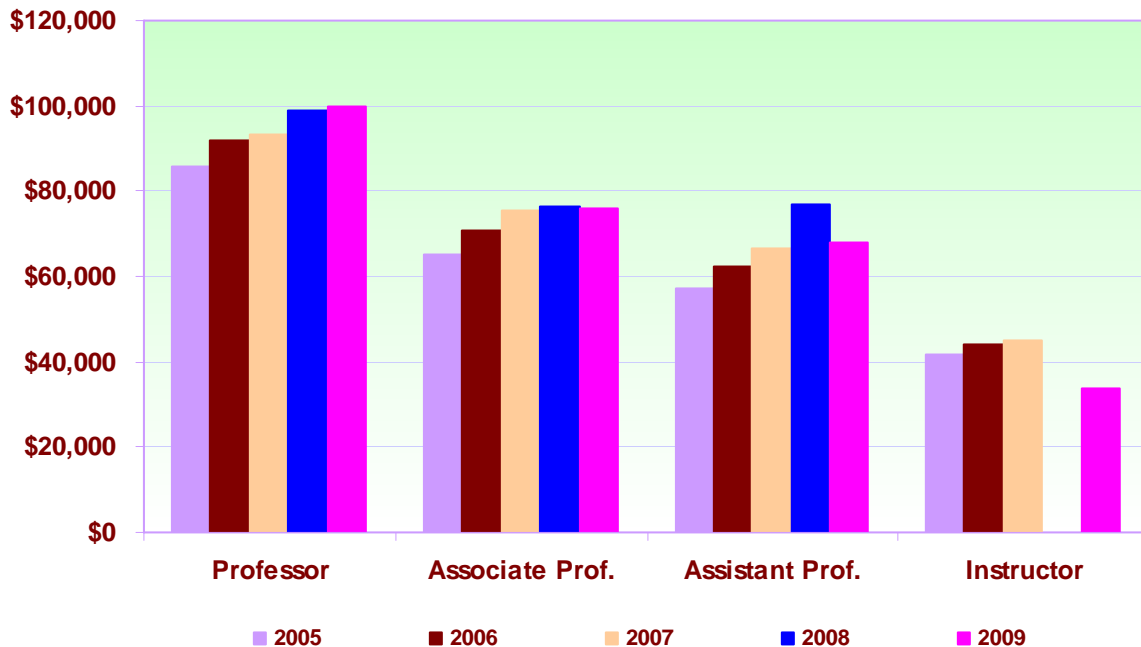
Fall 2005 - 2009

	Professor		Associate Prof.		Assistant Prof.		Instructor	
	NCCU	Others	NCCU	Others	NCCU	Others	NCCU	Others
<b>2005</b>	\$85,638	\$78,737	\$65,276	\$61,393	\$57,100	\$54,225	\$41,583	\$46,787
<b>2006</b>	\$91,787	\$85,906	\$70,845	\$67,831	\$62,143	\$58,813	\$44,186	\$50,400
<b>2007</b>	\$93,286	\$87,029	\$75,532	\$67,857	\$66,625	\$58,764	\$44,780	\$50,330
<b>2008</b>	\$98,827	\$95,080	\$76,413	\$74,020	\$77,004	\$63,673		\$53,881
<b>2009</b>	\$99,630	\$98,213	\$75,785	\$76,633	\$67,924	\$65,853	\$33,750	\$53,400

Source: Salary data adjusted to nine-month salary scales for Full-Time faculty. Others consist of average salary of the 16 campuses in UNC system.

## Average Salary Trend of Full-Time Faculty

Fall 2005 - 2009



## Full-Time Faculty by College/School, Department, Rank and Gender

Fall 2009

College/School	Professor		Associate		Assistant Instructor		Lecturer		Other		Total		
	F	M	F	M	F	M	F	M	F	M			
Biology	3	3	2	10	4	4					4	2	32
BBRI					1	1						1	3
BRITE		1		1							2	2	6
Chemistry		1		2	2							1	6
Criminal Justice		1		1	2	5						3	12
Dramatic Arts				2	1								3
Education													
Environmental Science				1								1	2
English	1	2	5	4	8	5		1	1		7		34
Fine Arts		3		1		1					1		6
Geography		1	1			2							4
Health Education	1				4	1					1		7
History	1	1	1	3	2	1							9
Human Sciences	2			1	2				1		6	2	14
Math-Computer		2	2	2	1	6					2	4	19
M-Foreign Languages	1		3	3	2	1					1	1	12
Music	1		2	1		3					2	11	20
Nursing	1		1		4						16	1	23
PE / Recreation	1		3	2	4	2					2	3	17
Physics		1			1	3						2	7
Public Administration	1	2	1	2	1	1						1	9
Political Science		1		2	1	2						2	8
Psychology		2	2	4	2	2						1	13
Sociology		3	1	1	1							1	7
Social Work					2	1					1		4
School of Business	3	8	2	3	11	11			1		3	1	43
School of Law	3	4	2	2	7	4					7	5	34
School of Library / Info. Sci.		1	2	1	2	1					1	1	9
School of Education	4	3	7	5	11	1					7	1	39
Communication Disorders		1									1		2
Counselor Education		1											1
Curriculum & Instruction	1												1
VC for Student Affairs											1		1
Unknown	1	1											2
<b>Sub-Total</b>	<b>25</b>	<b>43</b>	<b>37</b>	<b>54</b>	<b>76</b>	<b>58</b>		<b>1</b>	<b>2</b>	<b>1</b>	<b>65</b>	<b>47</b>	<b>409</b>
<b>Full-Time Faculty Total</b>	<b>68</b>		<b>91</b>		<b>134</b>		<b>1</b>		<b>3</b>		<b>112</b>		<b>409</b>

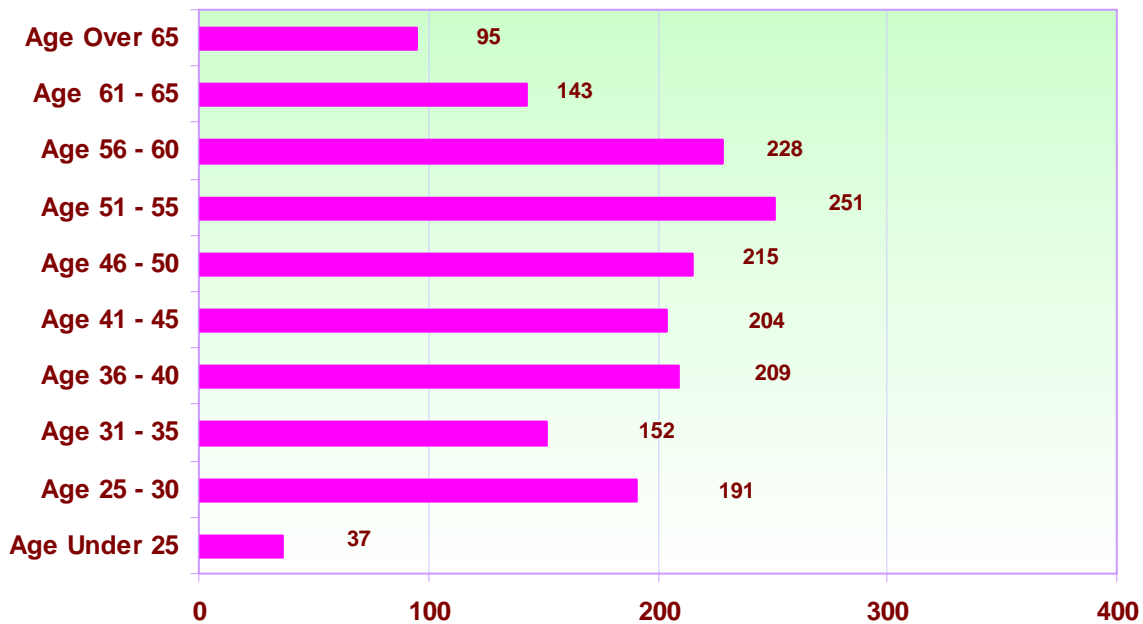
## University Workforce by Ethnicity, Gender and Age Range

**Fall 2009**

Age Range	Hispanic		Am-Ind.		Asian		Black		White		Other		Total
	F	M	F	M	F	M	F	M	F	M	F	M	
Under 25					1		18	12	4	1		1	37
25 - 30		1		1	4	4	92	65	8	10	3	3	191
31 - 35			2		2	7	78	45	8	7	1	2	152
36 - 40			1	1	13	6	101	53	16	16		2	209
41 - 45			1	2	9	12	88	52	21	15	2	2	204
46 - 50		1	3		3	8	100	62	16	19	2	1	215
51 - 55	2		3	2	4	7	110	66	24	29	1	3	251
56 - 60			3		2	1	108	72	14	26	2		228
61 - 65	2	1	2	2	3	.	57	44	12	20			143
Over 65					2	3	27	44	5	14			95
<b>Subtotal</b>	<b>4</b>	<b>3</b>	<b>15</b>	<b>8</b>	<b>43</b>	<b>48</b>	<b>779</b>	<b>515</b>	<b>128</b>	<b>157</b>	<b>11</b>	<b>14</b>	<b>1725</b>
<b>Total</b>	<b>7</b>		<b>23</b>		<b>91</b>		<b>1294</b>		<b>285</b>		<b>25</b>		<b>1725</b>

## University Workforce by Ethnicity, Gender and Age Range

**Fall 2009**



## Administrative Positions of University Workforce by Title

Fall 2009

### Middle to Upper Management

EPA Position Title	Female	Male	Total
<b>Chancellor</b>		1	1
Provost		1	1
Vice Chancellor	1	3	4
Associate Vice Chancellor	2	2	4
Assistant Vice Chancellor	2	2	4
Dean	3	5	8
Associate Dean	3	1	4
Assistant Dean	5	1	6
Director	24	13	37
Associate Director	2	1	3
Assistant Director		1	1
Assistant to Chancellor	2		2
Coordinator	1		1
Assistant Coach		1	1
Communication Specialist	1		1
Interim Dean	2		2
Program Office	1		1
Interim Associate Dean	1		1
Acting Director	2		2
Supervising Attorney	2		2
Physician	1		1
Manager	1		1
Interim Director	2		2
Special Assistant	1	1	2
Interim CIO		1	1
Associate Comptroller		1	1
Chief of Staff	1		1
Chief of Legal Counsel	1		1
Dir. of Govt. Comm. Relation	1		1
<b>Total</b>	<b>62</b>	<b>35</b>	<b>97</b>

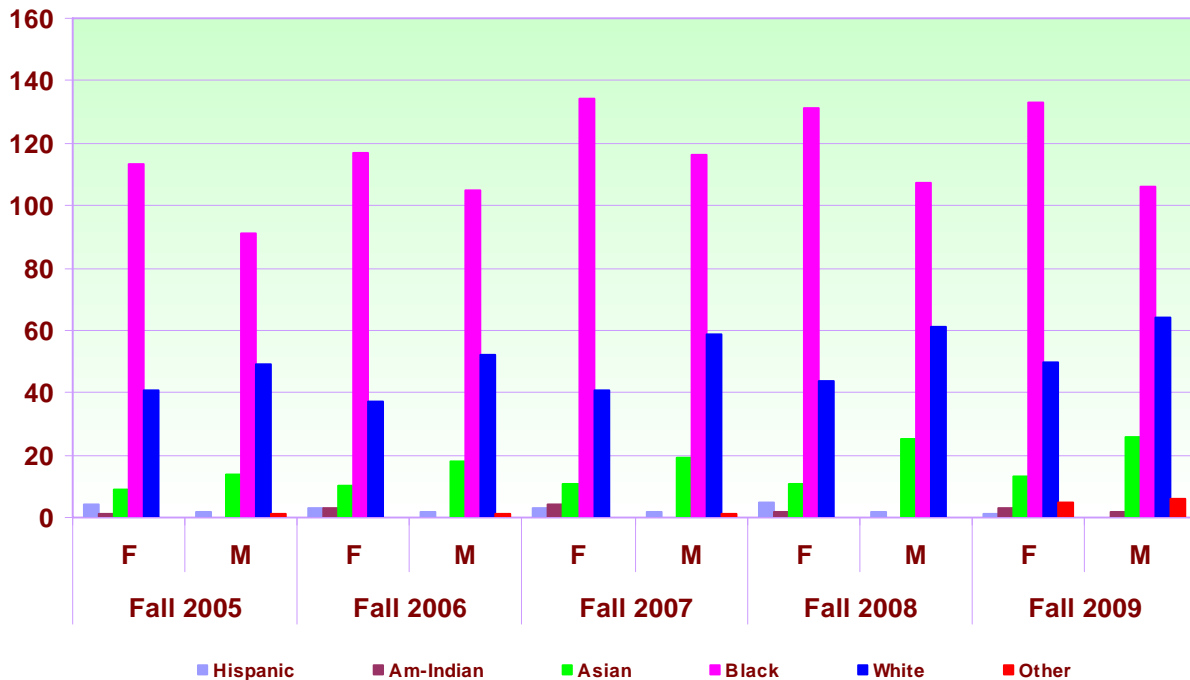
## Full-Time Faculty by Ethnicity and Gender

Fall 2005 – 2009

Ethnicity	Gender	Fall 2005		Fall 2006		Fall 2007		Fall 2008		Fall 2009	
		No.	%	No.	%	No.	%	No.	%	No.	%
Hispanic	F	4	1.2%	3	0.9%	3	0.8%	5	1.3%	1	0.2%
	M	2	0.6%	2	0.6%	2	0.5%	2	0.5%		
Am-Indian	F	1	0.3%	3	0.9%	4	1.0%	2	0.5%	3	0.7%
	M									2	0.5%
Asian	F	9	2.8%	10	2.9%	11	2.8%	11	2.8%	13	3.2%
	M	14	4.3%	18	5.2%	19	4.9%	25	6.4%	26	6.4%
Black	F	113	34.8%	117	33.6%	134	34.4%	131	33.8%	133	32.5%
	M	91	28.0%	105	30.2%	116	29.7%	107	27.6%	106	25.9%
White	F	41	12.6%	37	10.6%	41	10.5%	44	11.3%	50	12.2%
	M	49	15.1%	52	14.9%	59	15.1%	61	15.7%	64	15.6%
Other	F									5	1.2%
	M	1	0.3%	1	0.3%	1	0.3%			6	1.5%
<b>Total</b>		<b>273</b>	<b>100%</b>	<b>325</b>	<b>100%</b>	<b>348</b>	<b>100%</b>	<b>388</b>	<b>100%</b>	<b>409</b>	<b>100%</b>

## Full-Time Faculty by Ethnicity, and Gender

Fall 2005 – 2009



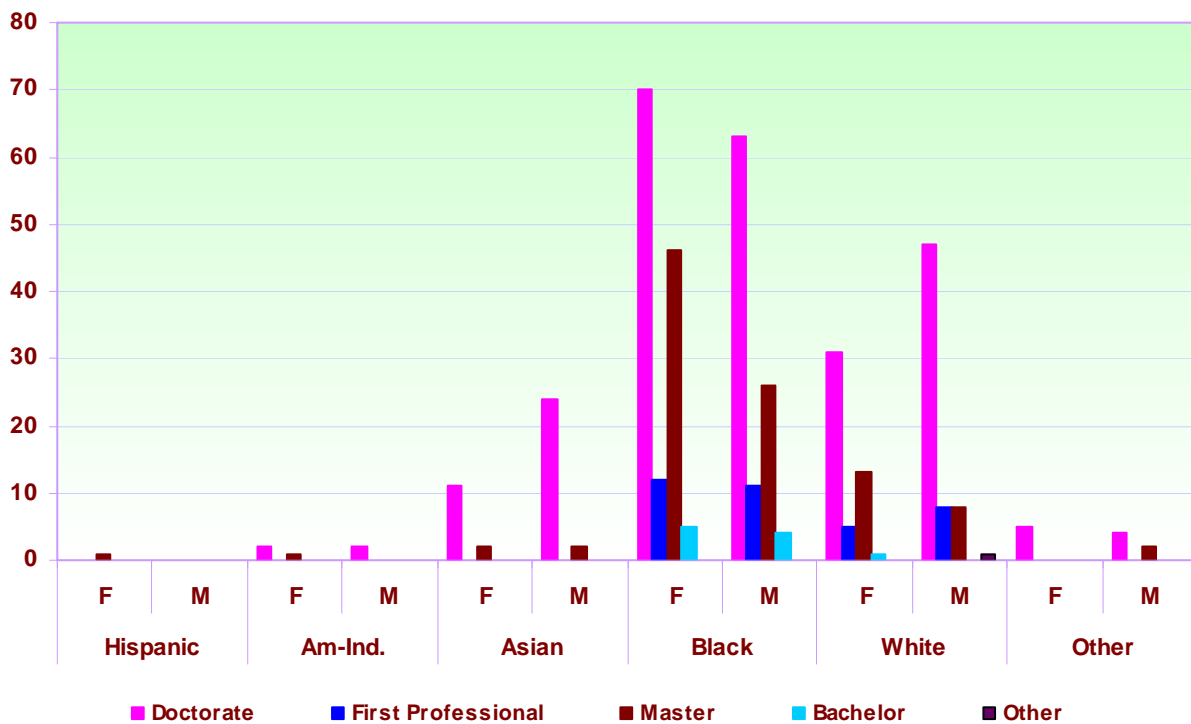
## Full-Time Faculty by Highest Earned Degree, Ethnicity, and Gender

Fall 2009

	Hispanic		Am-Ind		Asian		Black		White		Other		Total
	F	M	F	M	F	M	F	M	F	M	F	M	
Doctorate			2	2	11	24	70	63	31	47	5	4	259
First Professional							12	11	5	8			36
Master	1		1		2	2	46	26	13	8		2	101
Bachelor							5	4	1				10
Associate										1			1
Other								2					2
<b>Total</b>	<b>1</b>	<b></b>	<b>5</b>	<b></b>	<b>39</b>	<b></b>	<b>239</b>	<b></b>	<b>114</b>	<b></b>	<b>11</b>	<b></b>	<b>409</b>

## Full-Time Faculty by Highest Earned Degree, Ethnicity, and Gender

Fall 2009



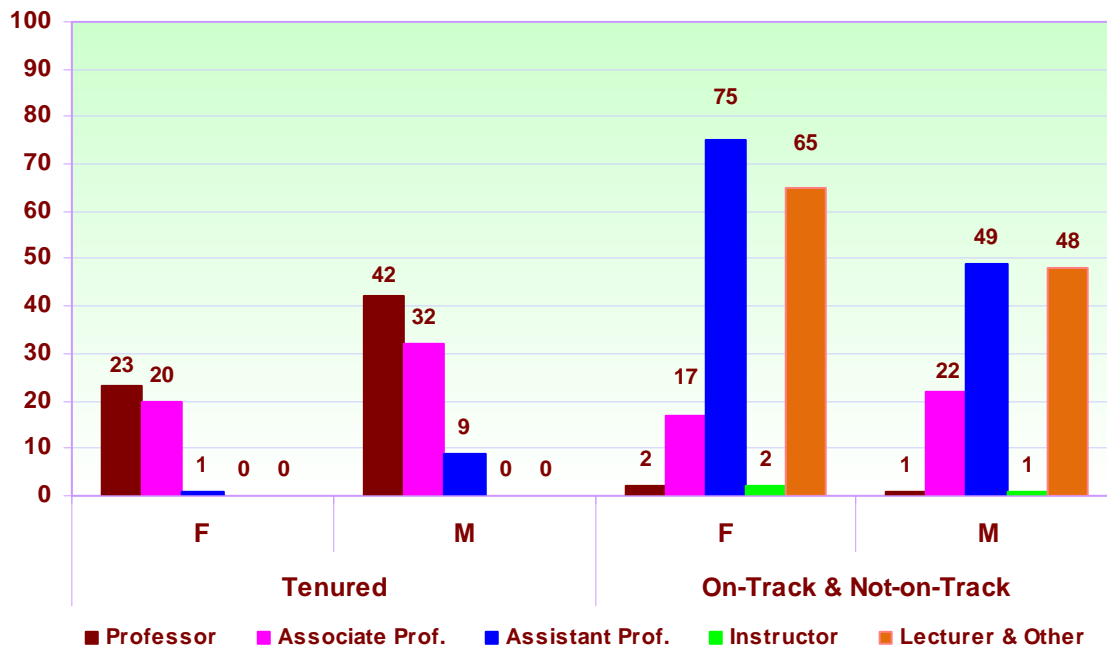
## Full-Time Faculty by Tenure Status, Rank, and Gender

Fall 2004 – 2009

Male - Tenured	2004	2005	2006	2007	2008	2009
Professor	38	33	33	33	42	42
Associate Professor	40	40	39	37	33	32
Assistant Professor	7	7	7	7	9	9
<b>On Track &amp; Not-On-Track</b>						
Professor			1	1	1	1
Associate Professor	6	11	16	20	20	22
Assistant Professor	14	21	29	33	45	49
Instructor	1					1
Lecturer & Other	38	45	53	66	45	48
<b>Female - Tenured</b>						
Professor	19	18	20	14	24	23
Associate Professor	30	28	25	24	20	20
Assistant Professor	6	5	4	1	1	1
<b>On Track &amp; Not-On-Track</b>						
Professor	2	1	3	3	2	2
Associate Professor	3	10	9	15	19	17
Assistant Professor	12	25	29	44	68	75
Instructor	5	5	4	3		2
Lecturer & Other	52	76	76	89	59	65
<b>Total Full-Time Faculty</b>	<b>273</b>	<b>325</b>	<b>348</b>	<b>390</b>	<b>388</b>	<b>409</b>

## Full-Time Faculty by Tenure Status, Rank, and Gender

Fall 2009



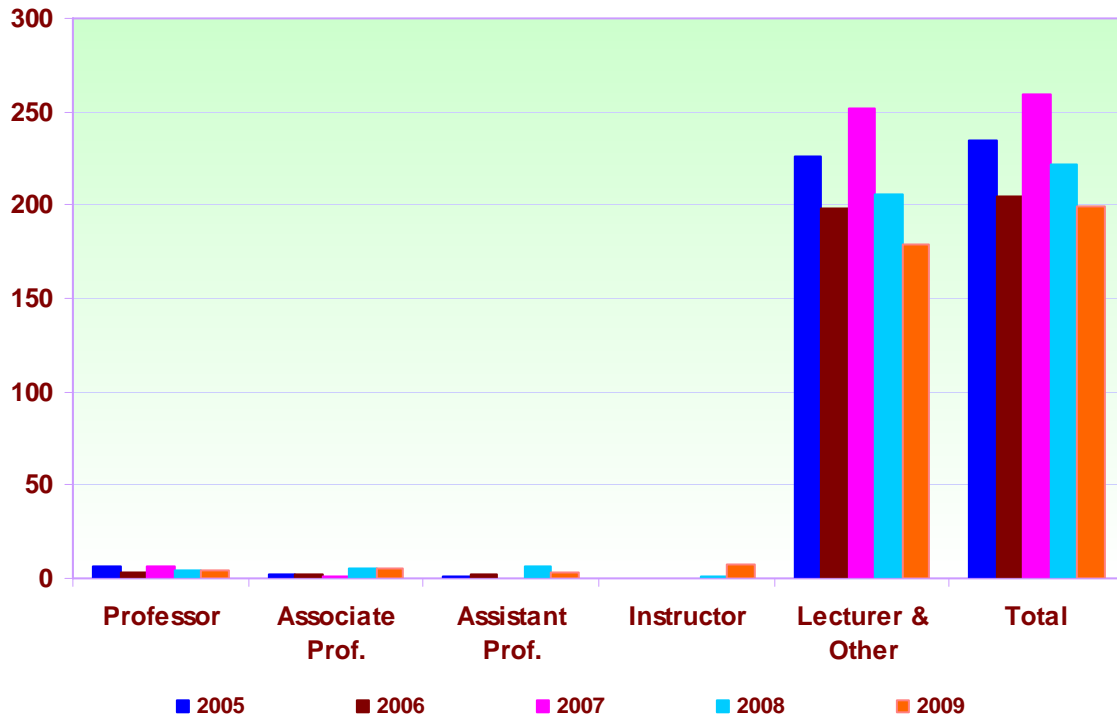
## Part-Time Faculty by Rank

Fall 2005 - 2009

	Professor		Associate Professor		Assistant Professor		Instructor		Lecturer & Other		Total
	No.	%	No.	%	No.	%	No.	%	No.	%	
<b>2005</b>	6	2.6%	2	0.9%	1	0.4%			226	96.2%	235
<b>2006</b>	3	1.5%	2	1.0%	2	1.0%			198	96.6%	205
<b>2007</b>	6	2.3%	1	0.4%					252	97.3%	259
<b>2008</b>	4	1.8%	5	2.3%	6	2.7%	1	0.5%	206	92.8%	222
<b>2009</b>	4	2.0%	5	2.5%	3	1.5%	8	4.0%	179	89.9%	199

## Part-Time Faculty by Rank

Fall 2005 - 2009





## **Section 7**

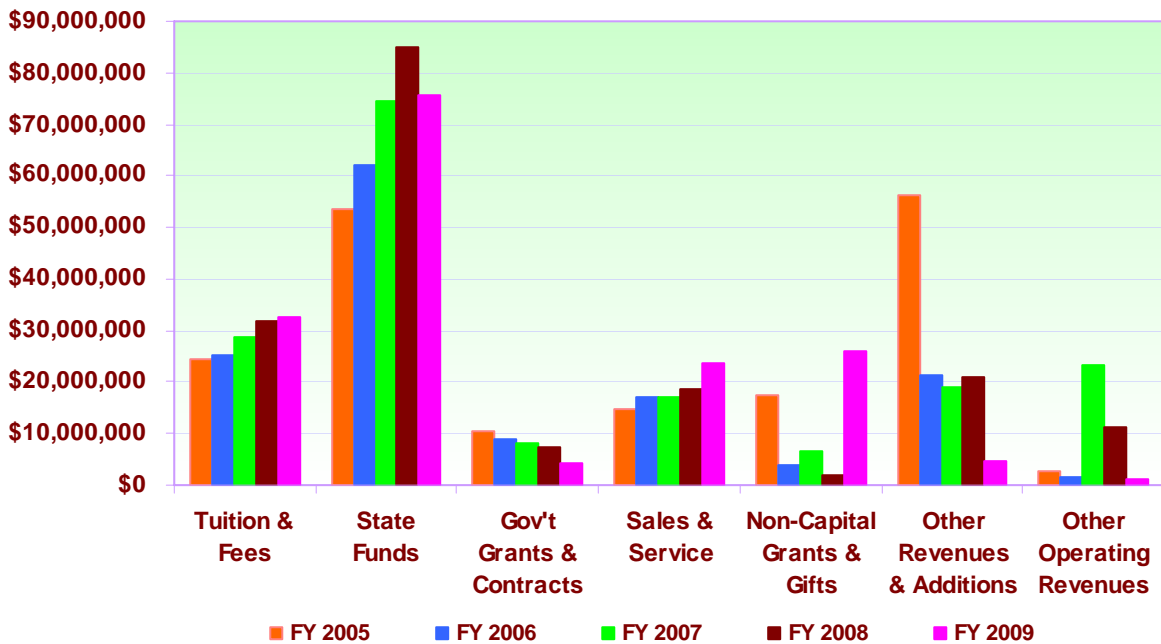
# ***University Finance***

Office of Research, Evaluation and Planning

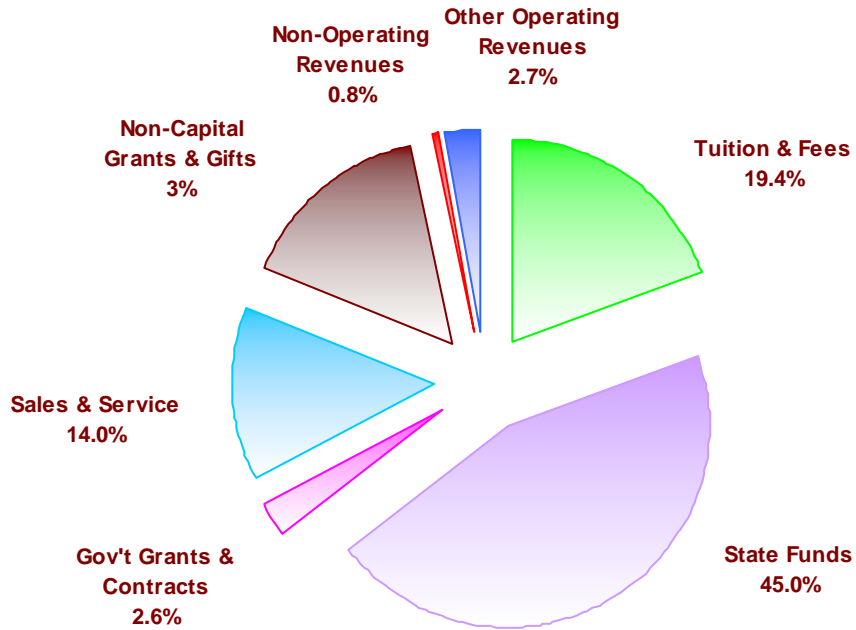
## University Revenues by Fiscal Years

Revenue Source	2005	2006	2007	2008	2009
Student Tuition & Fees	\$24,440,423	\$25,060,122	\$28,645,280	\$31,963,318	\$ 32,698,123
Non-Operating State Funds	\$53,515,638	\$62,010,445	\$74,595,799	\$85,065,655	\$ 75,836,451
<b>Government Grants / Contracts</b>					
Federal Grants	\$9,360,313	\$8,138,490	\$7,622,323	\$7,251,922	\$ 4,242,479
State & Local Grants	\$1,158,290	\$684,221	\$330,510	\$299,190	\$ 198,676
Sales & Services & Others	\$14,570,985	\$17,159,594	\$17,059,971	\$18,535,296	\$ 23,580,334
Non-Operating Revenues	\$2,579,202	\$3,729,557	\$6,668,321	\$2,040,874	\$ 1,327,631
Non-Capital Fed & State Grants	\$17,379,601	\$21,498,244	\$18,882,745	\$21,009,634	\$ 25,968,438
Other Revenues & Additions	\$56,418,531	\$1,359,426	\$23,432,902	\$11,161,637	\$ 4,496,679
<b>Total Revenues</b>	<b>\$179,422,983</b>	<b>\$139,640,099</b>	<b>\$177,237,851</b>	<b>\$177,327,526</b>	<b>\$168,348,811</b>

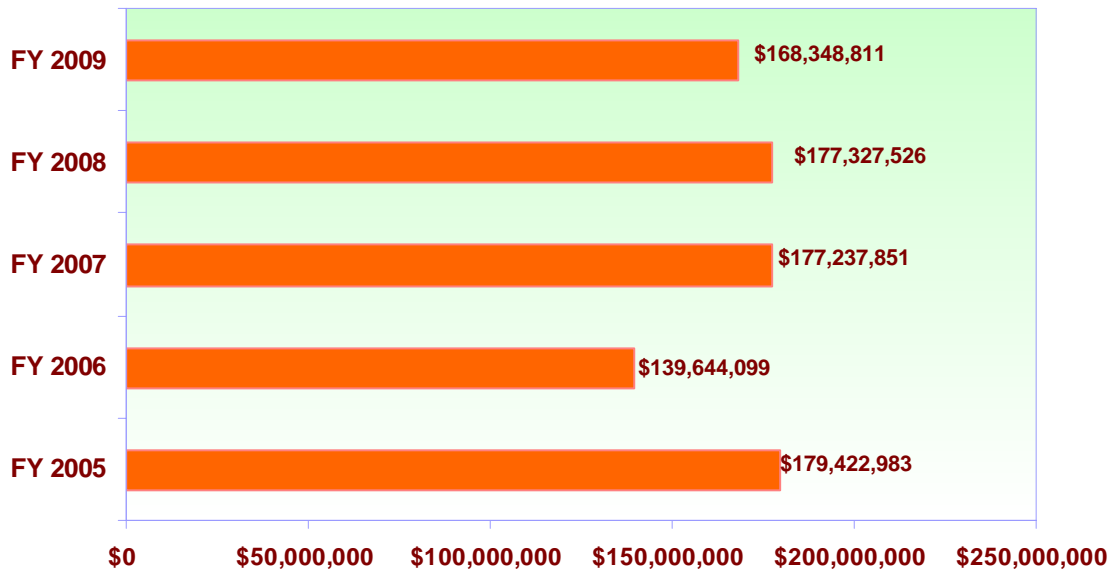
## University Revenues by Fiscal Years



## Percentage of University Revenues by Source Fiscal Year 2009



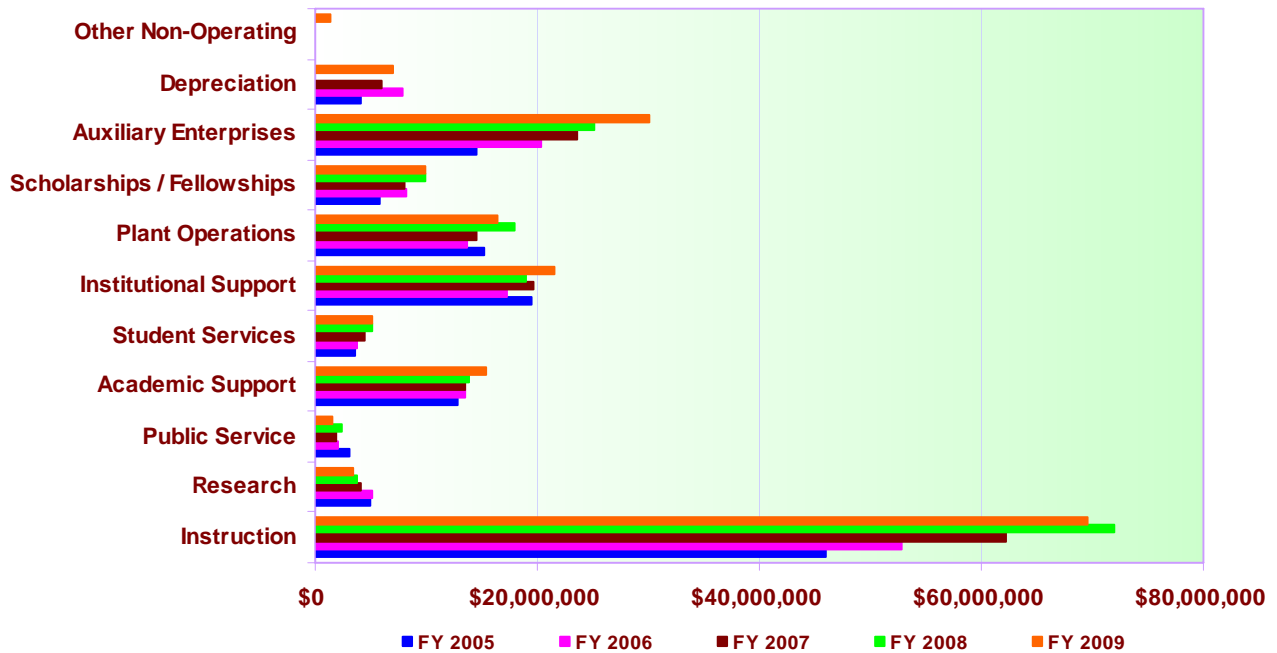
## University Revenue by Fiscal Years



## University Expenditures by Fiscal Years

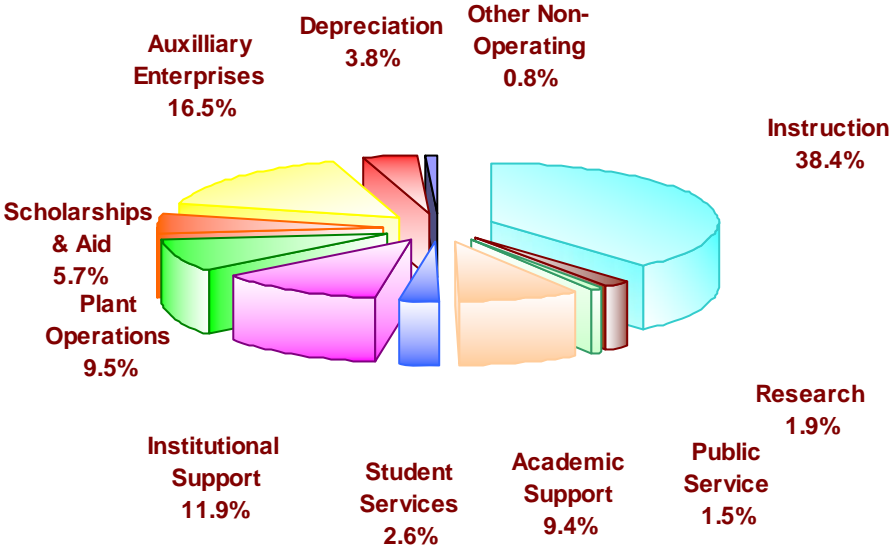
Expenditures by Function	2005	2006	2007	2008	2009
Instruction	\$ 45,961,483	\$ 52,767,539	\$ 62,242,271	\$ 71,954,768	\$ 69,638,932
Research	\$ 4,880,584	\$ 5,048,741	\$ 4,124,609	\$ 3,816,909	\$ 3,434,897
Public Service	\$ 3,114,078	\$ 2,133,343	\$ 1,903,379	\$ 2,338,531	\$ 1,486,814
Academic Support	\$ 12,846,150	\$ 13,579,871	\$ 13,530,605	\$ 13,857,827	\$ 15,415,548
Student Services	\$ 3,570,972	\$ 3,822,593	\$ 4,461,593	\$ 5,050,301	\$ 5,096,898
Institutional Support	\$ 19,420,651	\$ 17,250,126	\$ 19,611,434	\$ 18,987,291	\$ 21,577,773
Plant Operations	\$ 15,149,190	\$ 13,706,741	\$ 14,592,312	\$ 17,993,165	\$ 16,405,014
Scholarships & Fellowships	\$ 5,826,623	\$ 8,236,268	\$ 7,958,299	\$ 9,956,498	\$ 9,854,492
Auxiliary Enterprises	\$ 14,610,332	\$ 20,366,973	\$ 23,516,564	\$ 25,108,949	\$ 30,005,697
Depreciation	\$ 4,177,644	\$ 7,824,553	\$ 6,020,656	\$ 28,302	\$ 6,971,096
Other Non-Operating					\$ 1,436,804
<b>Total Expenditures</b>	<b>\$129,557,707</b>	<b>144,736,748</b>	<b>\$157,961,722</b>	<b>\$169,092,541</b>	<b>\$181,323,965</b>

## University Expenditures by Fiscal Years



# Percentage of University Expenditures

## Fiscal Year 2009



# University Expenditures by Fiscal Years

